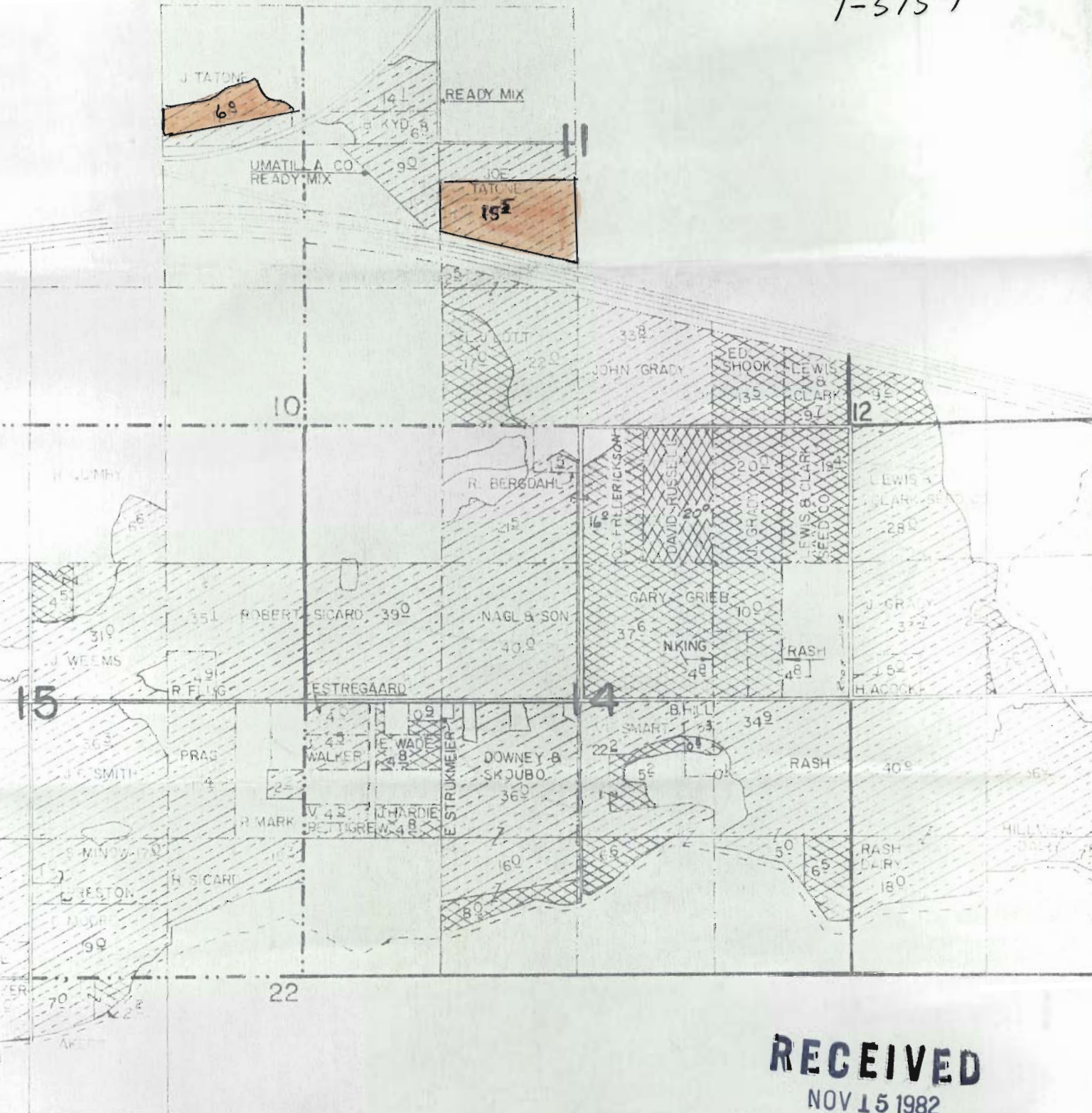


From : 4N R25 Sec. 10 SE NE 6°
4N R25 Sec. 11 NESW 15°



T-5157

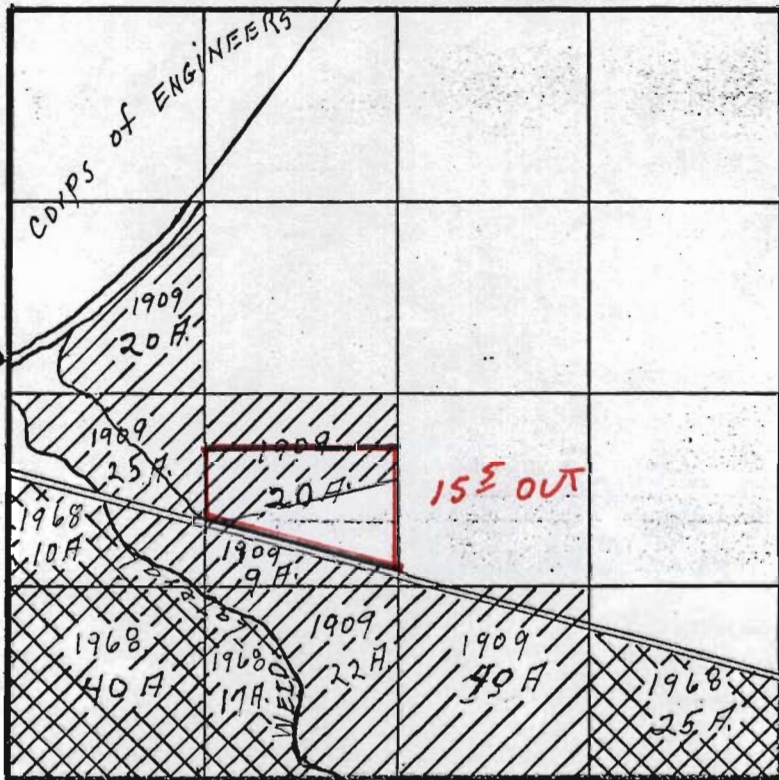


RECEIVED
NOV 15 1982
WATER RESOURCES DEPT.
SALEM, OREGON

T-5157

old HWY 730

COYPS take line



HWY 30

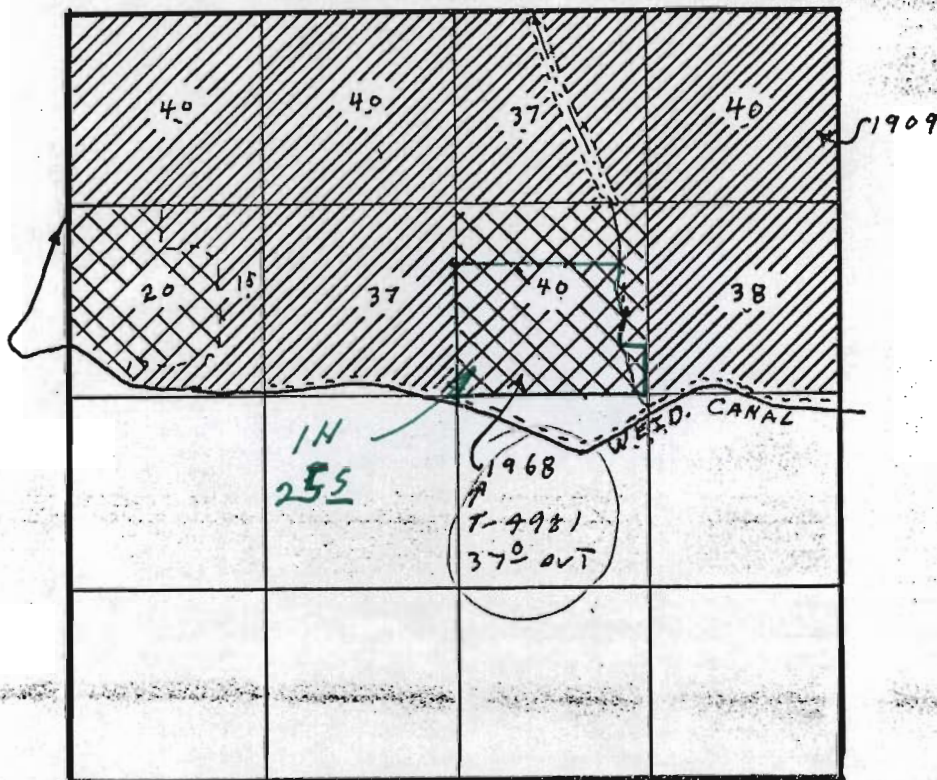
<u>T</u>	<u>R</u>	<u>S</u>	<u>40</u>	<u>1893</u>	<u>1906</u>	<u>1909</u>	<u>1968</u>	<u>Total</u>
4N	25E	11	SWNW			20		20
			NESW			29		29
			NWSW			25	10	35
			SWSW				40	40
			SESW			22	17	39
			SWSE			35 40		35 40
			SESE				25	25

136.0

92.0

228.0

T-5157

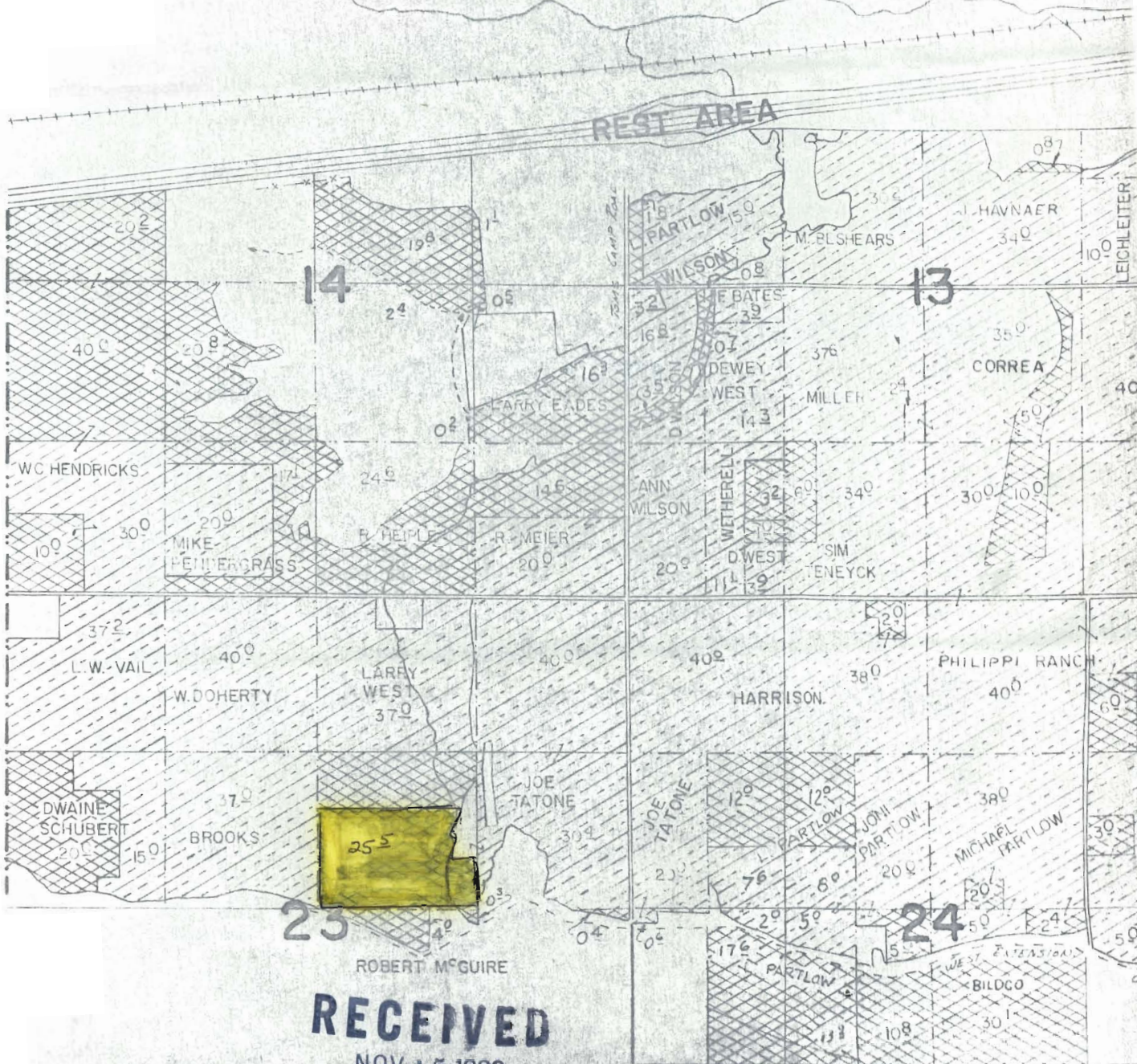


<u>T</u>	<u>R</u>	<u>S</u>	<u>40</u>	<u>1893</u>	<u>1906</u>	<u>1909</u>	<u>1968</u>	<u>Total</u>
4N	24E	23	NENE			40		40
			NWNE			37		37
			SWNE				40	40
			SENE			38		38
			NENW			40		40
			NWNW			40		40
			SWNW			15	20	35
			SENW			37		37
						247.0	60.0	307.0

To 4N RANGE 24 E. w.m. Section 23

T-5157

COLUMBIA RIVER



RECEIVED

NOV 15 1982

WATER RESOURCES DEPT.
SALEM, OREGON