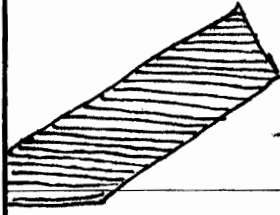


NW¹/₄ SW¹/₄

W¹/₄ COR SEC 2
T55 R12E

NW¹/₄ SW¹/₄

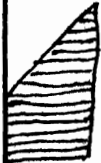
NE¹/₄ SW¹/₄



- 6.6 Acres

T-5175

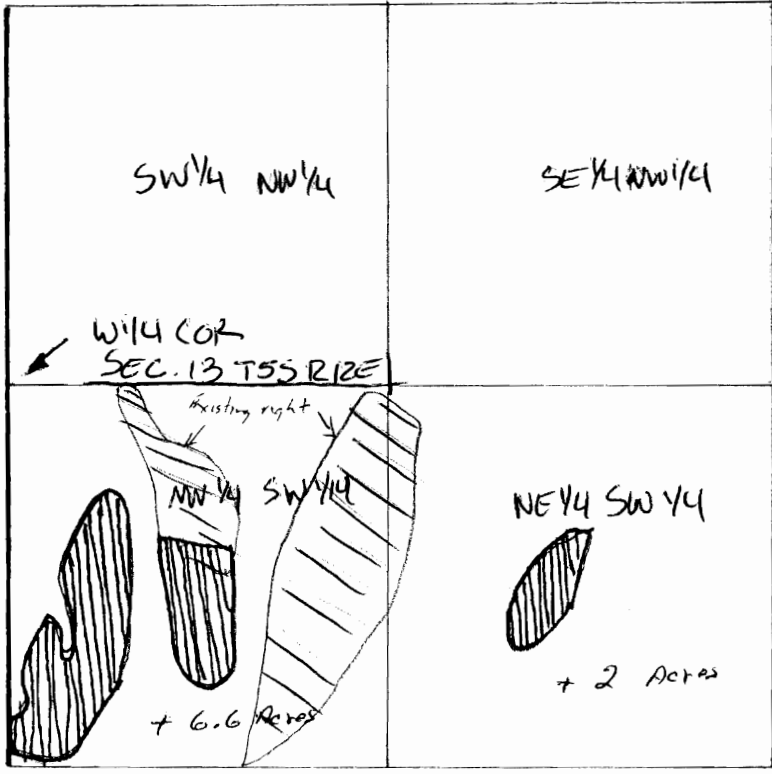
SW¹/₄ SW¹/₄



- 2 Acres

SW¹/₄ SW¹/₄

SE¹/₄ SW¹/₄



NW¹/₄ SW¹/₄

NE¹/₄ SW¹/₄

RECEIVED
DEC 15 1982
WATER RESOURCES DEPT.
SALEM, OREGON

SCALE 8" = 1 mile