

ON 26 T14S. R.13E.W.M.
SCHUTES COUNTY

RECEIVED

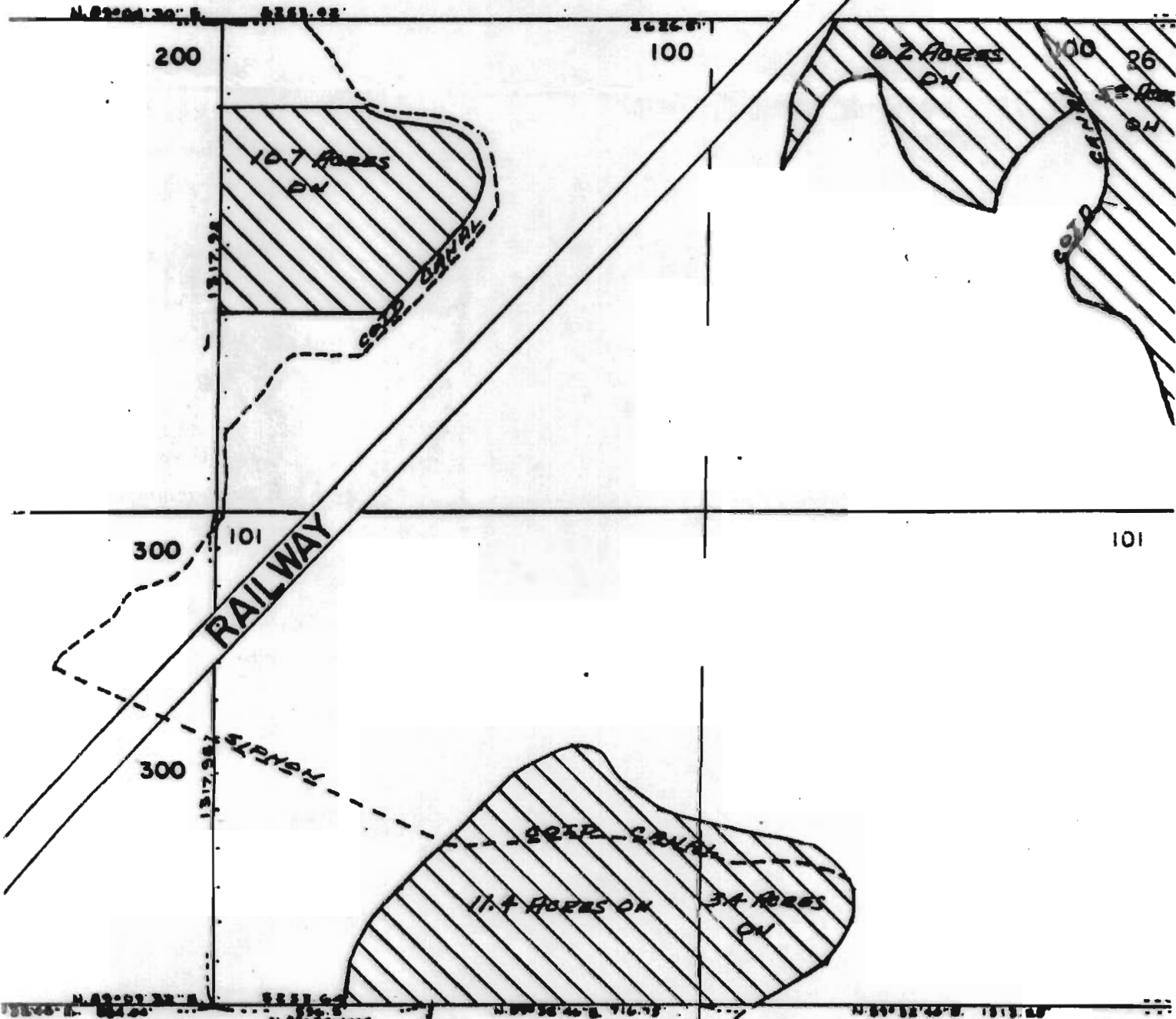
APR 28 1986

WATER RESOURCES DEPT
SALEM, OREGON

1"=400'

See Map 14 13 23

23



2.4

11.4

T-5254

RECEIVED

APR 25 1983

WATER RESOURCES DEPT.
SALEM, OREGON

20.4 ACRES OFF
380

16.3 ACRES OFF
380

MCKENZIE

HIGHWAY

