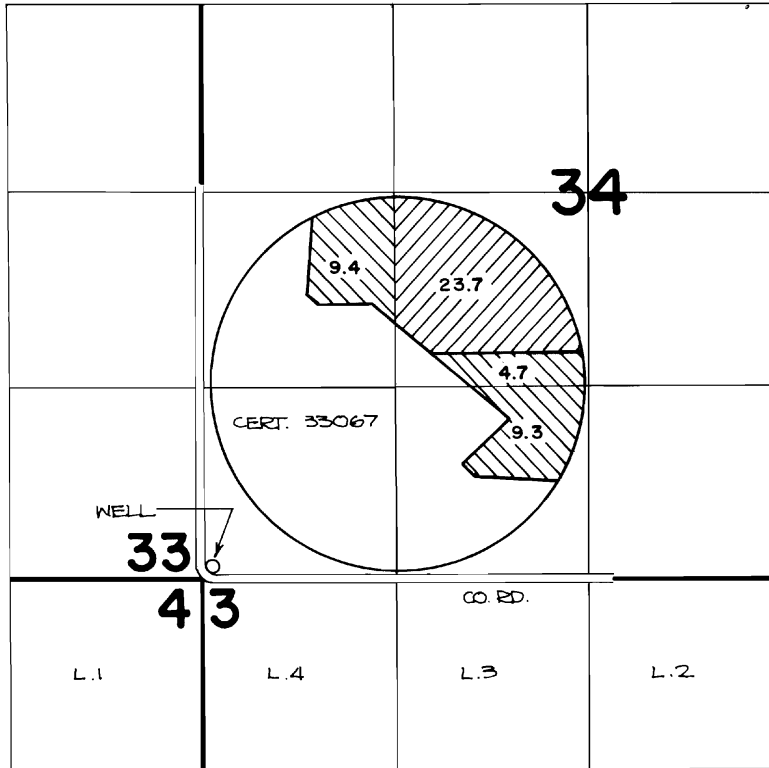


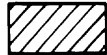
# T.26 & 27 S. R.15 E. W.M.



THE WELL IS LOCATED 80 FT. N. AND 50 FT. E. FROM THE S.W. CORNER OF SECTION 34.



T-5293



G-10918



SCALE: 4" = 1 MILE

## FINAL PROOF SURVEY UNDER

T 5293

Application No. G-10918 Permit No. G-10278...  
IN NAME OF

THE POPLARS RANCH, INC.

Surveyed OCT. 16, 1984, by P. Patten