

T-5360

RECEIVED

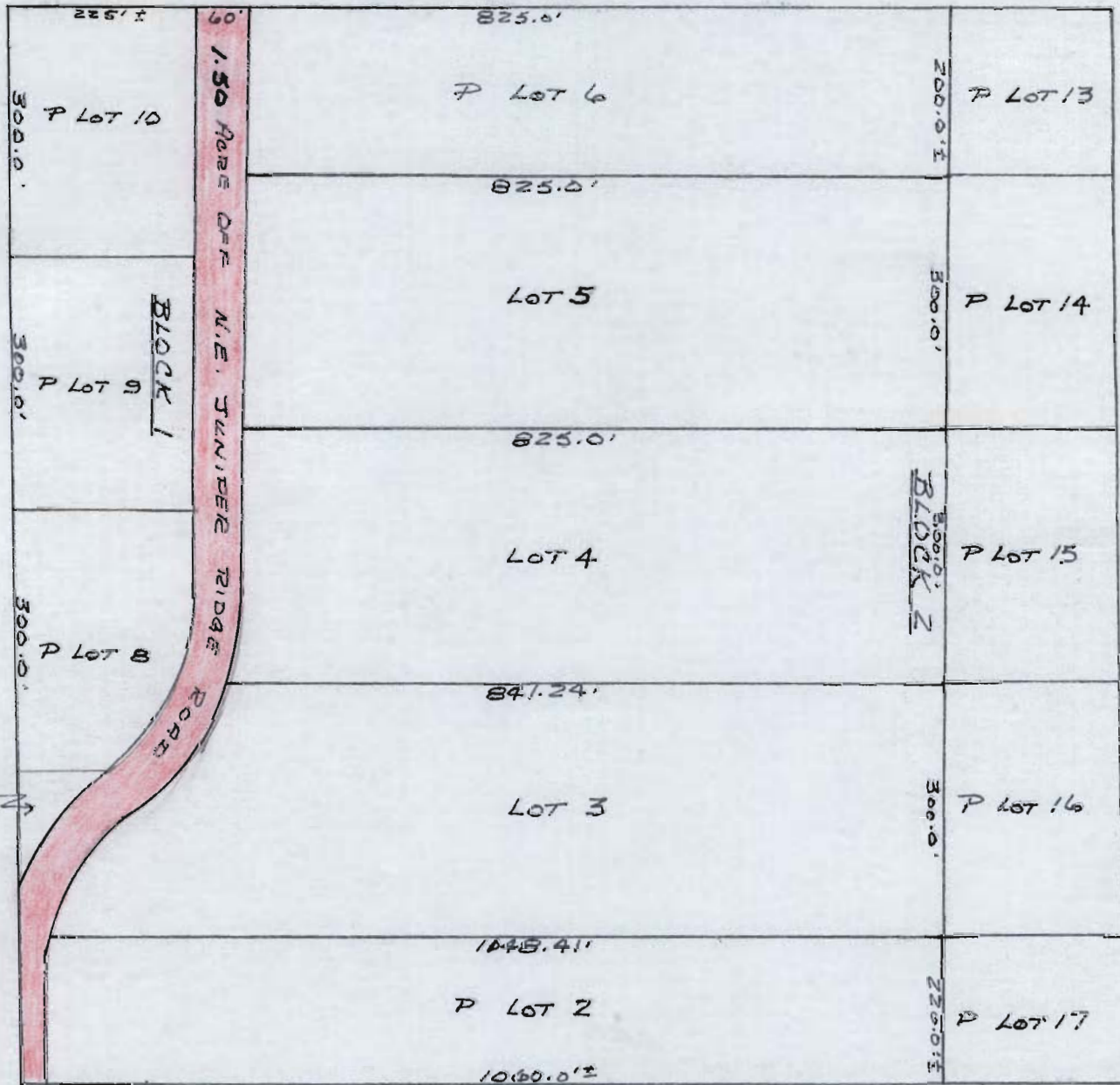
AUG 3 1983

WATER RESOURCES DEPT.  
SALEM, OREGON

SECTION 22, T. 14S., R. 13E 111M  
SE 1/4 - SW 1/4  
PART OF EQUESTRIAN MEADOWS, BLOCKS 1 & 2

1.50 ACRES OFF

SCALE 1" = 200'



RECEIVED

AUG 3 1983

WATER RESOURCES DEPT.  
SALEM, OREGON

T-5360

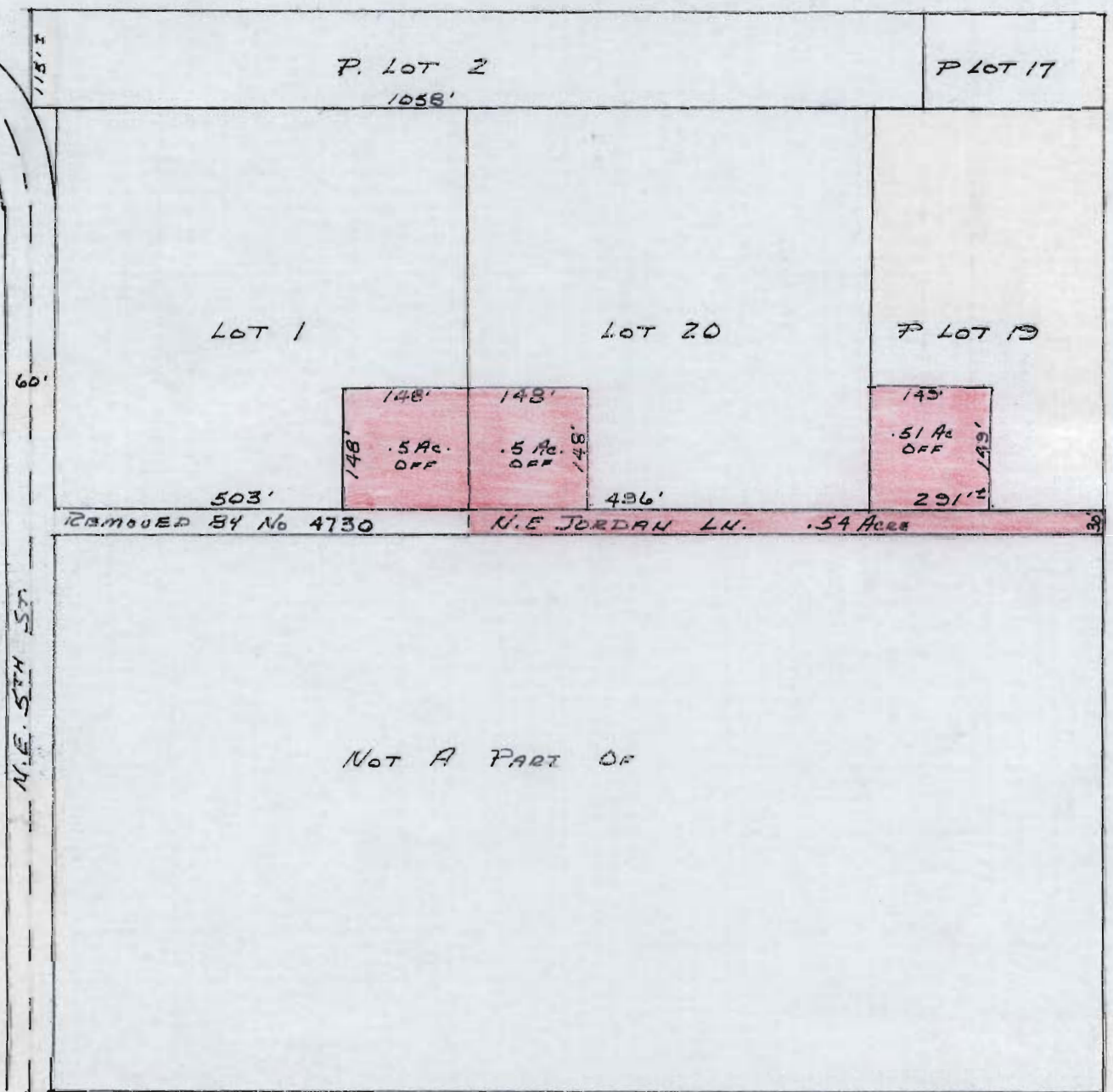
SECTION 27, T. 14S., R. 13 E. 1/4 N. 1/4

NE 1/4 - NW 1/4

PART OF EQUESTRIAN MEADOWS, BLOCK 2

2.05 ACRES OFF

SCALE 1" = 200'



NOT A PART OF

RECEIVED

AUG 31 1993

WATER RESOURCES DEPT.  
SALEM, OREGON

SECTION 27, T.14S., R.13E.W.17

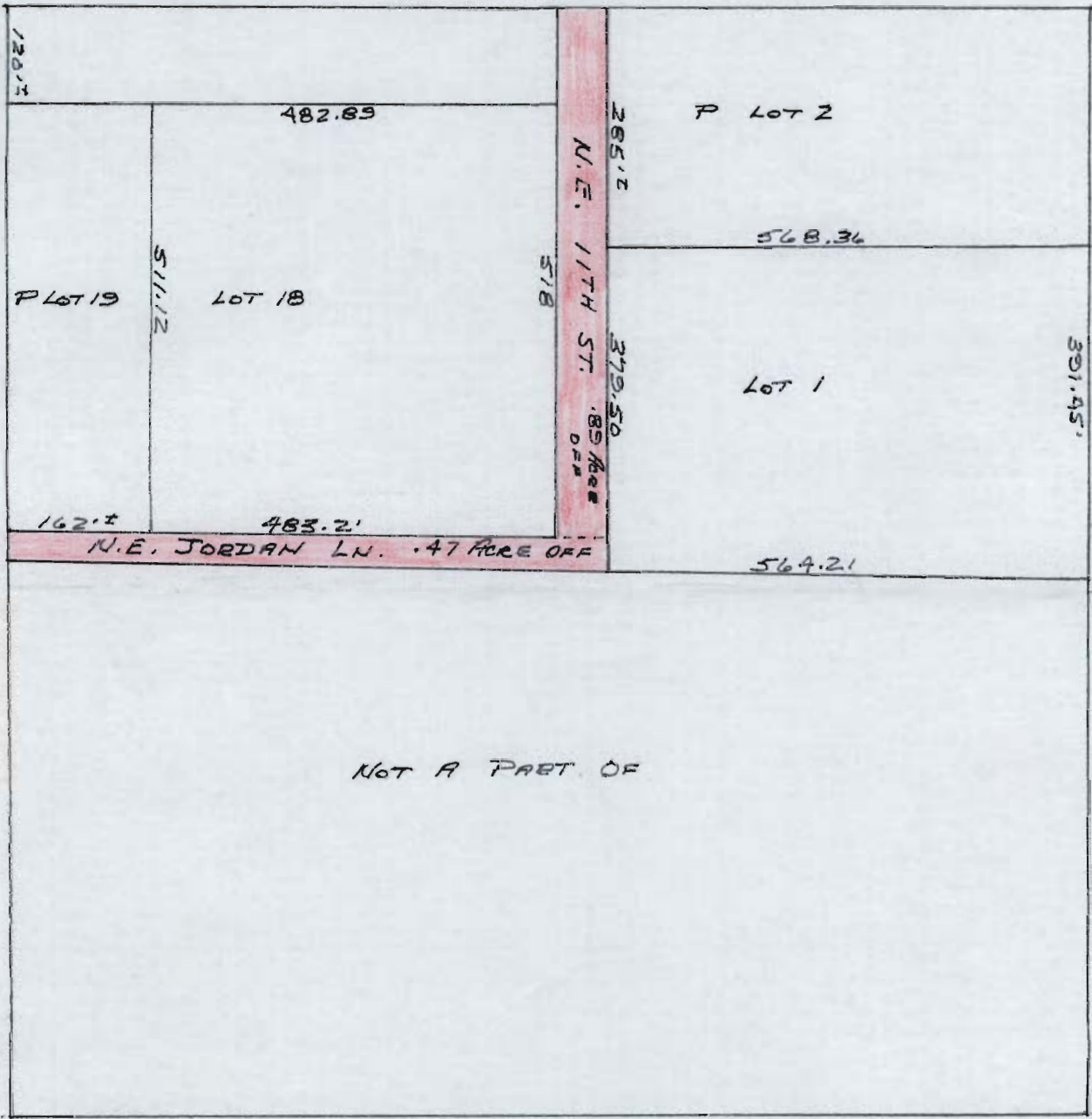
NW 1/4 - NE 1/4

PART OF EQUESTRIAN MEADOWS, BLOCK 2

SCALE 1" = 200'

T-5360

1.36 ACRES OFF



RECEIVED

AUG 3 1983

WATER RESOURCES DEPT.  
SALEM, OREGON

SECTION 22, T.14S., R.13E. W.1A

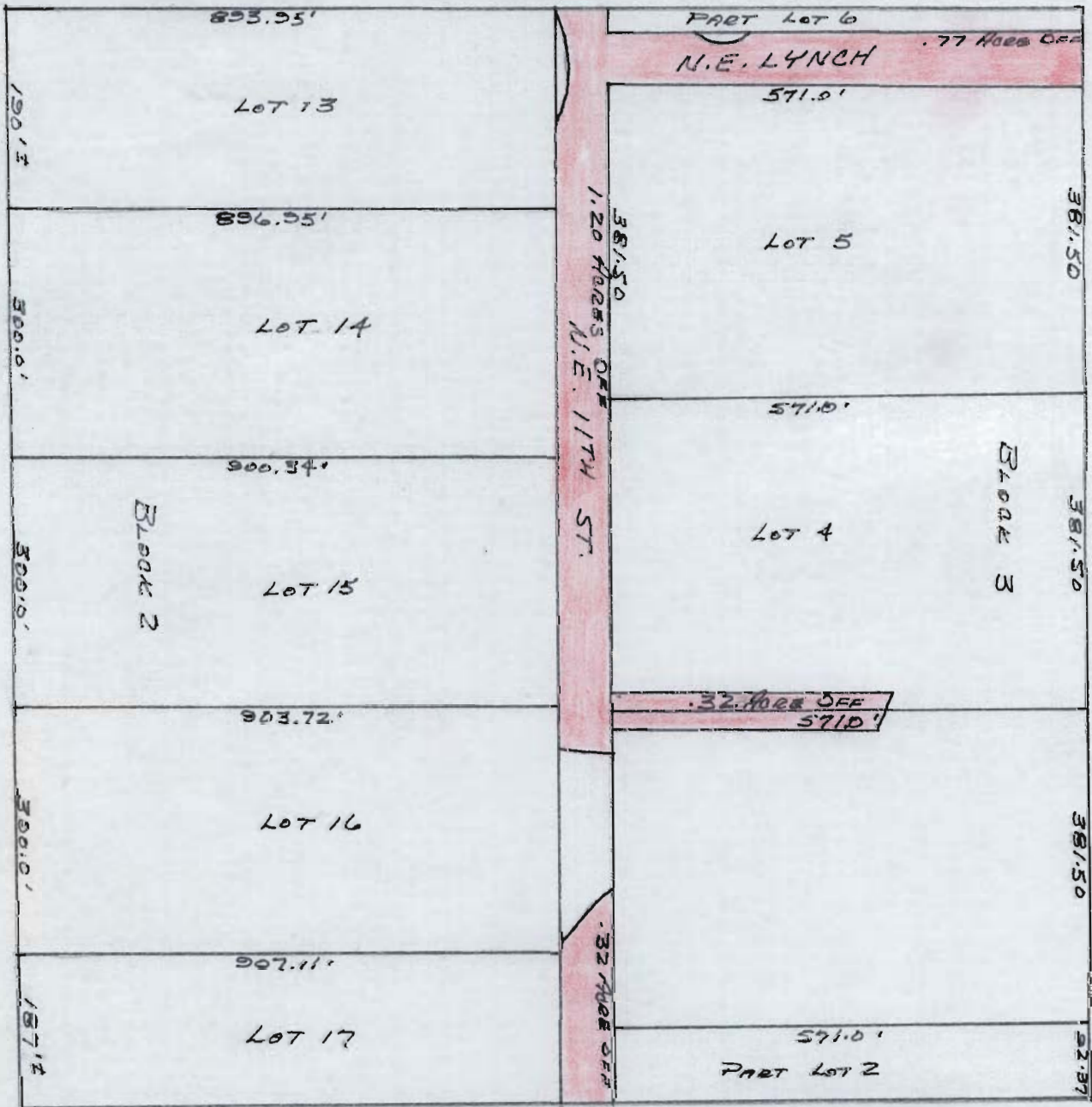
S1/4 - SE 1/4

PART OF EQUESTRIAN MEADOWS, BLOCKS 2 & 3

T-5360

2.61 ACRES OFF

SCALE 1"=200'



RECEIVED

AUG 3 1983

WATER RESOURCES DEPT.  
SALEM, OREGON

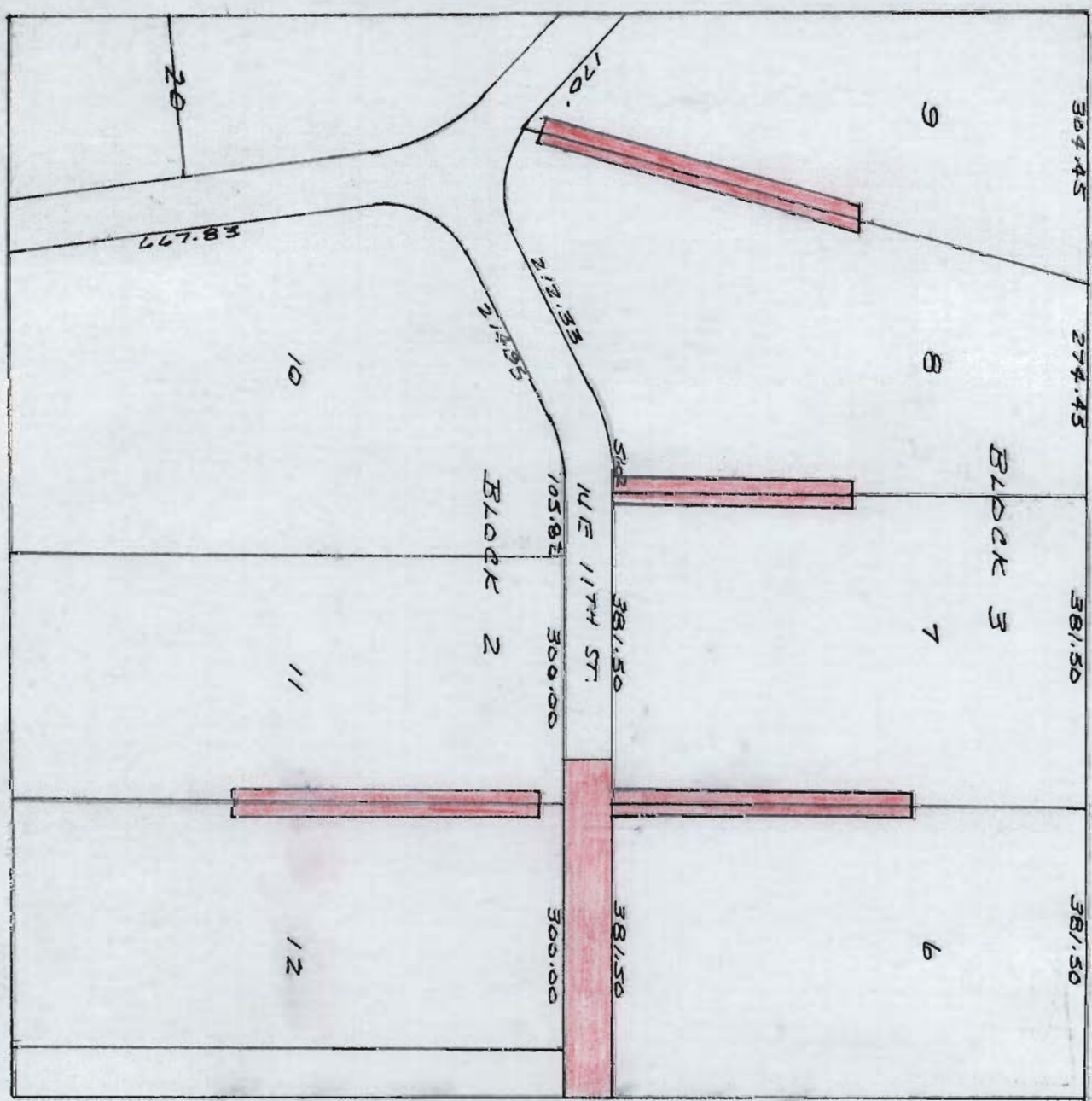
SECTION 22, T.14S., R.13E.W.1  
NW 1/4 - SE 1/4

PART OF EQUESTRIAN MEADOWS

SCALE 1" = 200'

T-5360

1.52 ACRES OFF



RECEIVED

AUG 3 1983

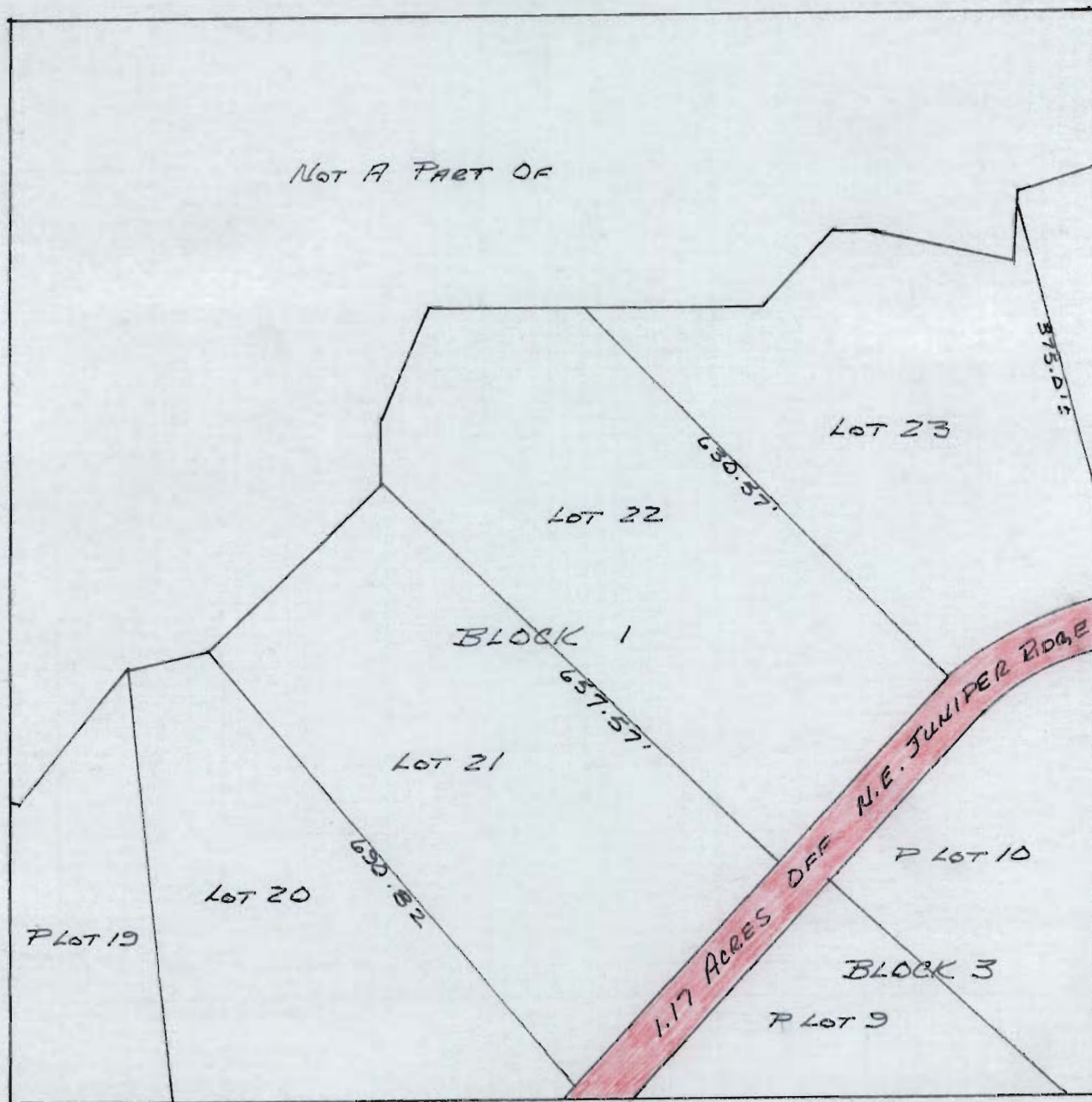
WATER RESOURCES DEPT.  
SALEM, OREGON

SECTION 22, T. 14S., R. 13E11M  
S1/4 - NE 1/4  
PART OF EQUESTRIAN MEADOWS  
PARTS OF BLOCKS 1 & 3

SCALE 1"=200'

F-5360

1.17 ACRES OFF



RECEIVED

AUG 31 1983

WATER RESOURCES DEPT.  
SALEM, OREGON

SECTION 22, T. 14S., R. 13E W/M  
SE 1/4 - NE 1/4

PART OF EQUESTRIAN MEADOWS, BLOCKS 1 & 3

T-5360

1.79 ACRES OFF

SCALE 1" = 200'

