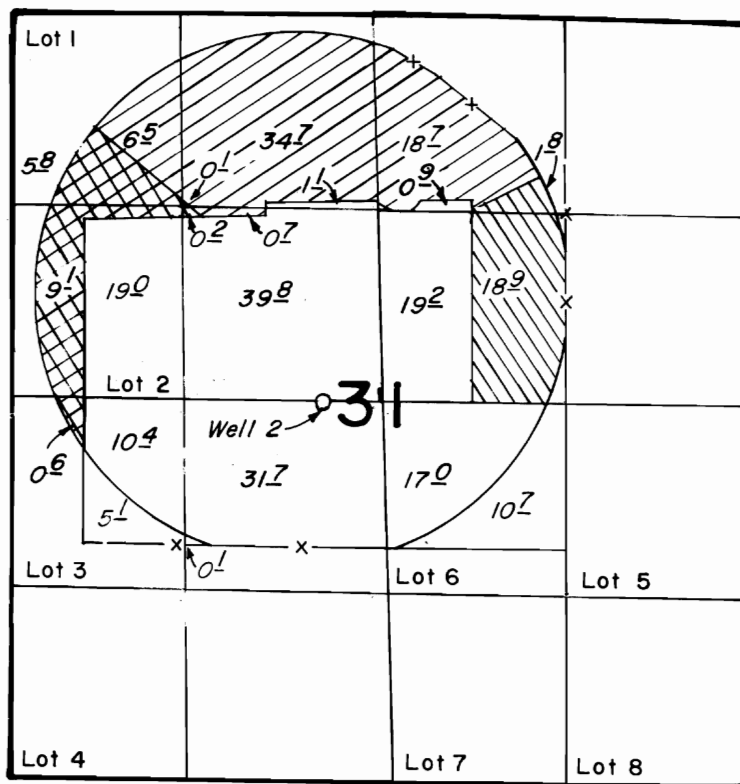





# T.26S.,R.14E.,W.M.



-  G-9288
-  T-5363
-  G-11072



SCALE: 4" = 1 MILE

Well Loc: 2600' S, & 2900' W., from the NE corner Section 31

## FINAL PROOF SURVEY UNDER

TRANSFER NOS. T-5363 & T-5364

G-11072                      G-10227

Application No. ~~G-9288~~ Permit No. ~~G-8709~~.....

IN NAME OF

.....**MICHAEL W. MATTIS**.....

Surveyed July 27, 1983, by L. M. TOLL.....

Oct. 12 1984, by P. PAGTER