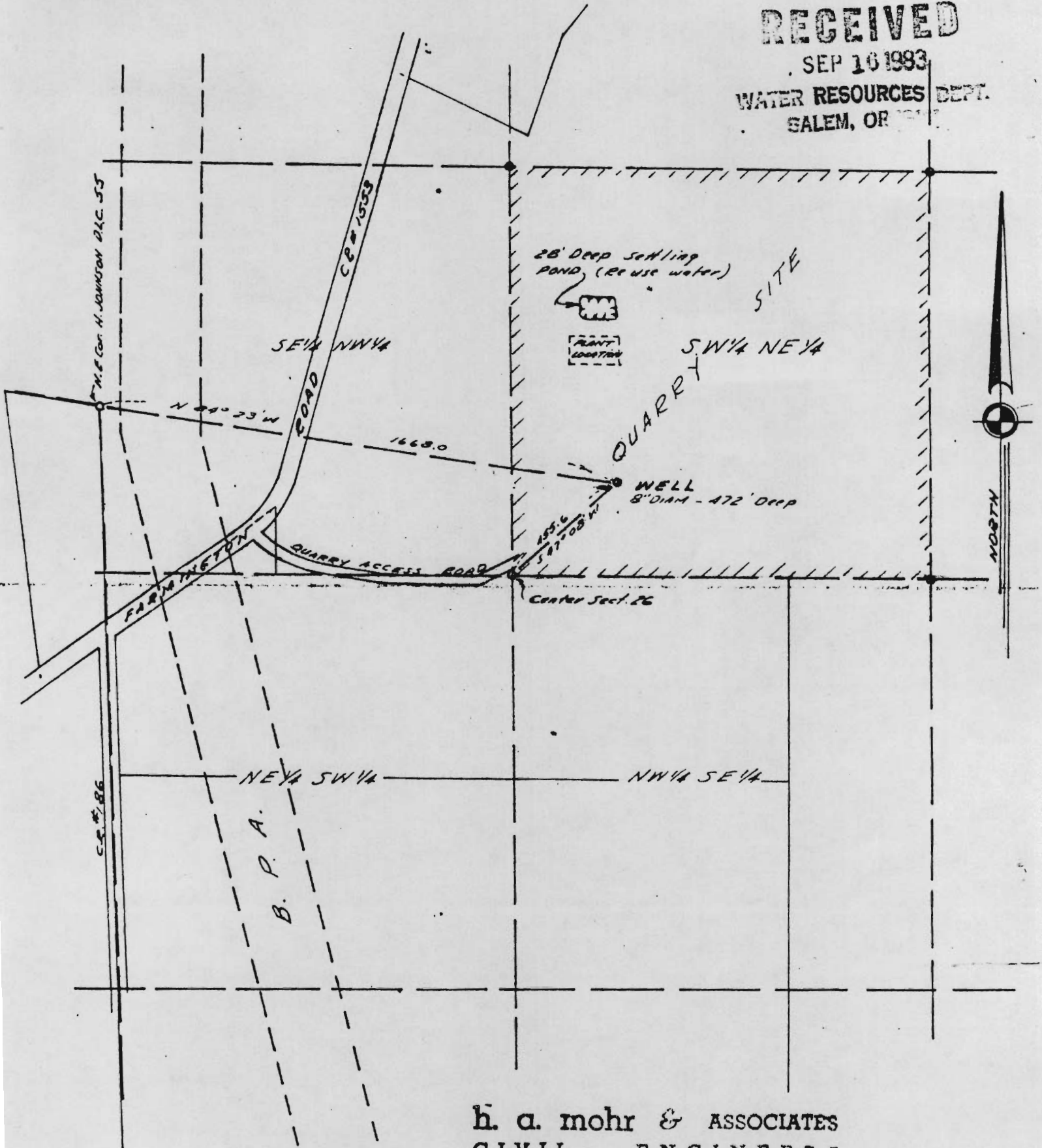


MAP TO ACCOMPANY WATER RIGHT APPLICATION  
 for  
 B-D ROCK CRUSHING CO., INC.  
 in  
 SECTION 26, T1S, R2W, W.M.  
 Washington County, Ore.

Scale: 1" = 400'

6 November 1961

**RECEIVED**  
 SEP 16 1983  
 WATER RESOURCES DEPT.  
 SALEM, OR



**h. a. mohr & ASSOCIATES**  
 CIVIL ENGINEERS

Application No. G-2157  
 Permit No. G-1985