

SW1/4 NE1/4 SEC19 T36S R5 W.W.M.

JOSEPHINE COUNTY

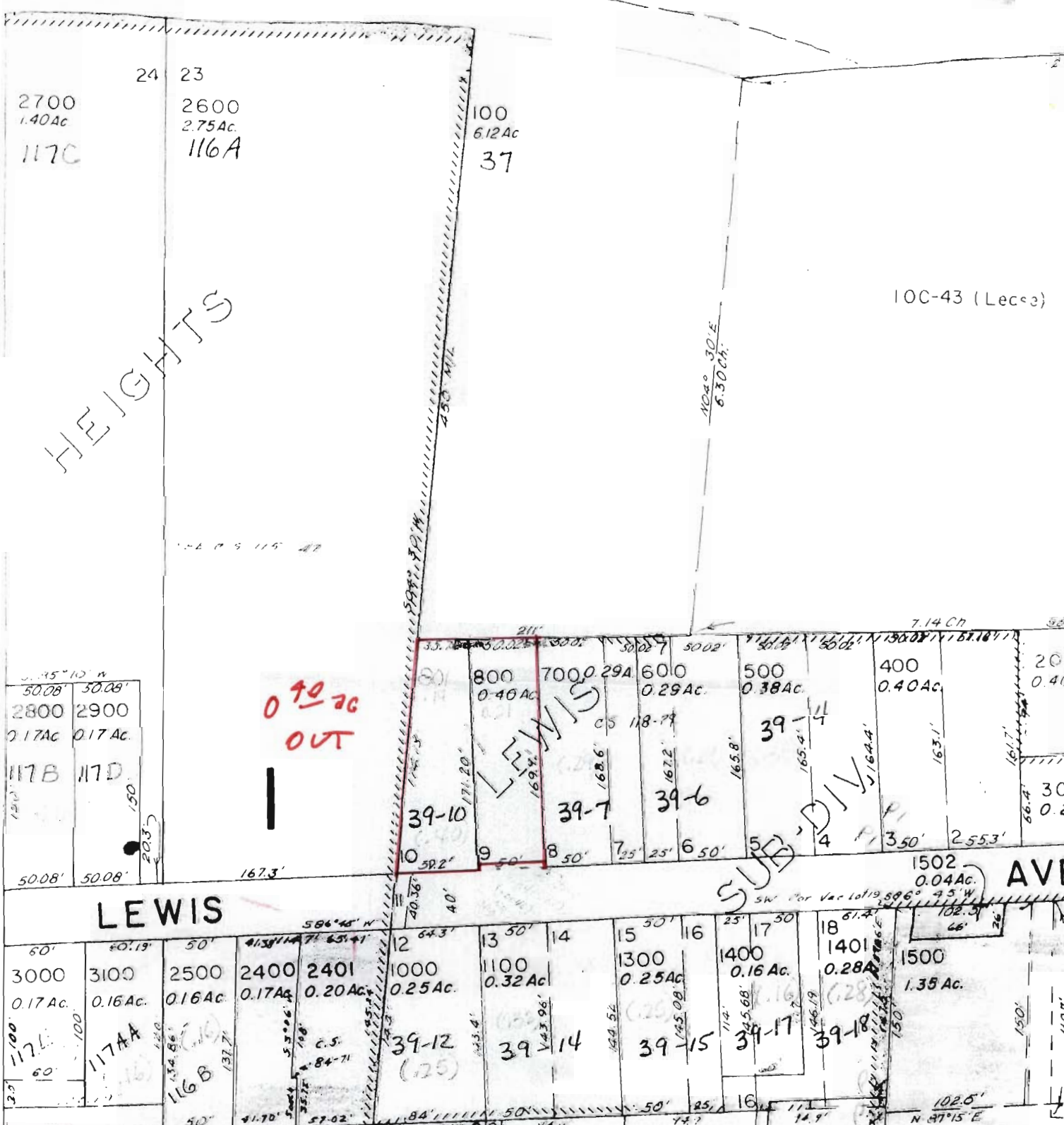
1" = 100'

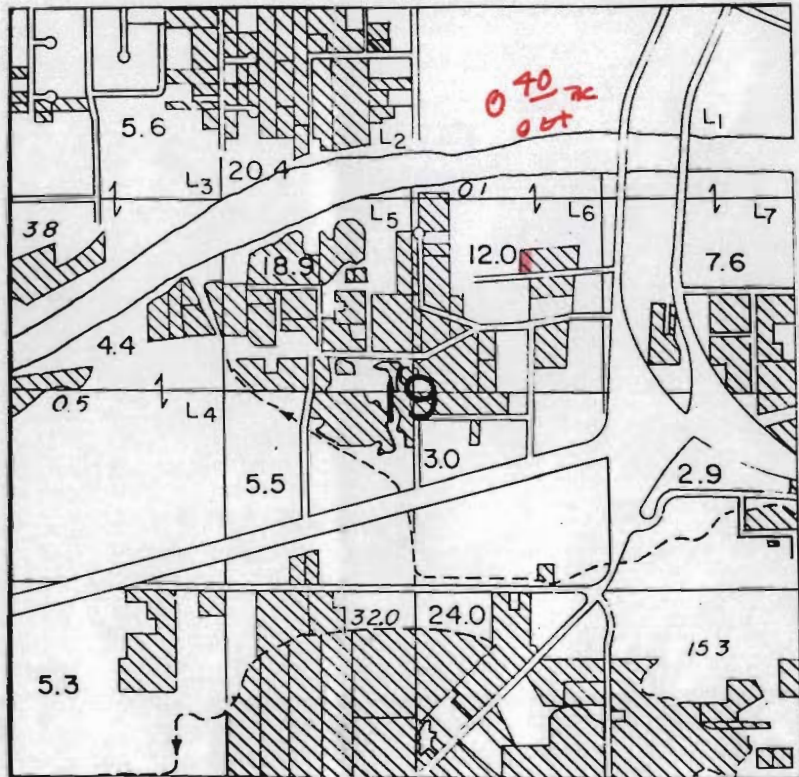
T-5415

RECEIVED
NOV 29 1983
WATER RESOURCES DEPT.
SALEM, OREGON

SEE MAP 36 5 19-12

RIVER





T-5415

36-5-19-13

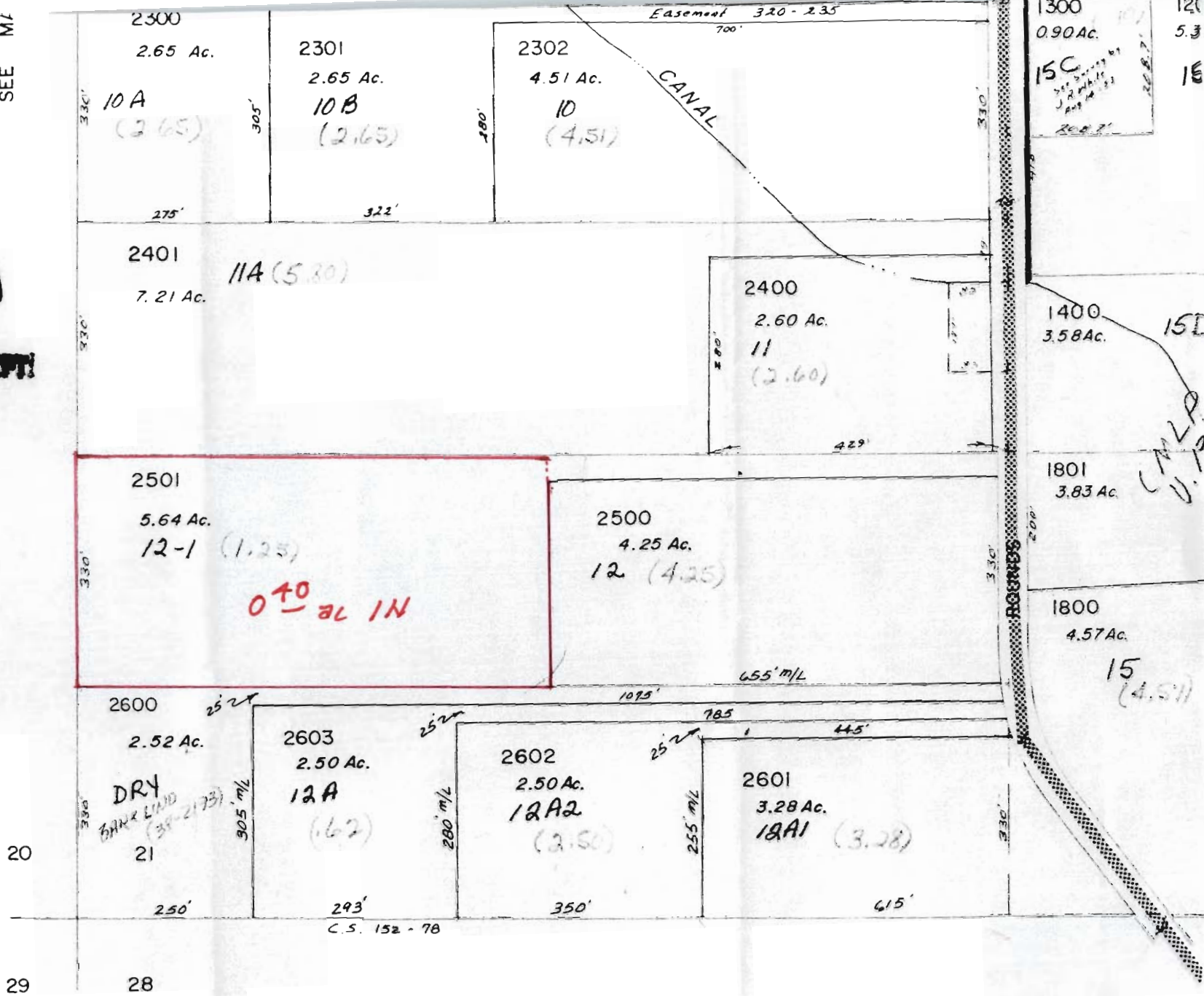
SEE M1

T-5415

RECEIVED

NOV 29 1983

WATER RESOURCES DEPT.
SALEM, OREGON



1300
0.90 Ac.
15C
J.R. White
Aug 14 1983
2007

1400
3.58 Ac.
15D
C.M.L.P.
U.P.

1801
3.83 Ac.
1800
4.57 Ac.
15
(4.51)

SEE MAP 36 6 28

36-6-21-3
2" = 100'

J-5415

36-6-21

040-20
1N

