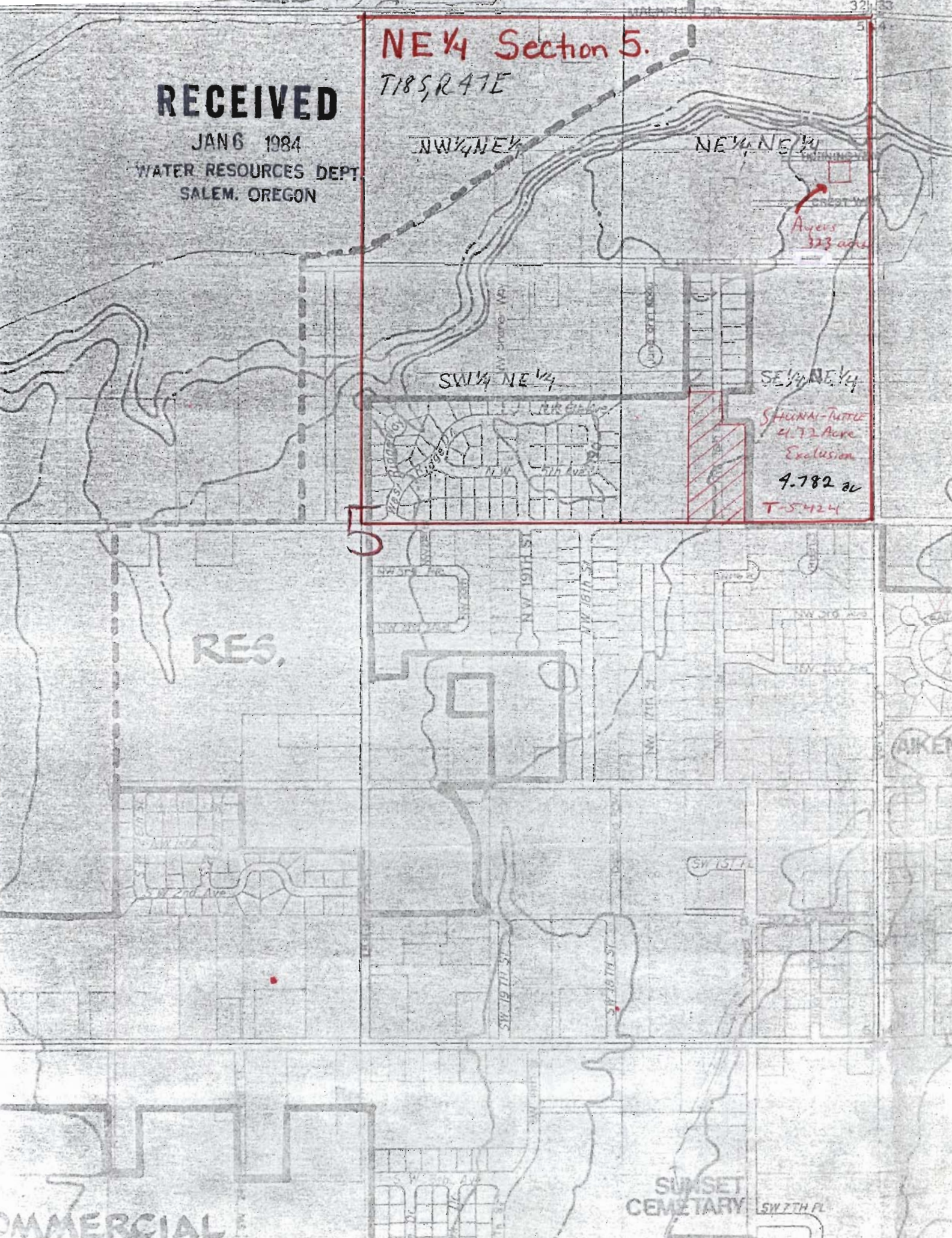


**RECEIVED**

JAN 6 1984  
WATER RESOURCES DEPT  
SALEM, OREGON

**NE 1/4 Section 5.**

T18S, R47E



NW 1/4 NE 1/4

NE 1/4 NE 1/4

SW 1/4 NE 1/4

SE 1/4 NE 1/4

SHANNON-TITTLE  
21.72 Acre  
Exclusion

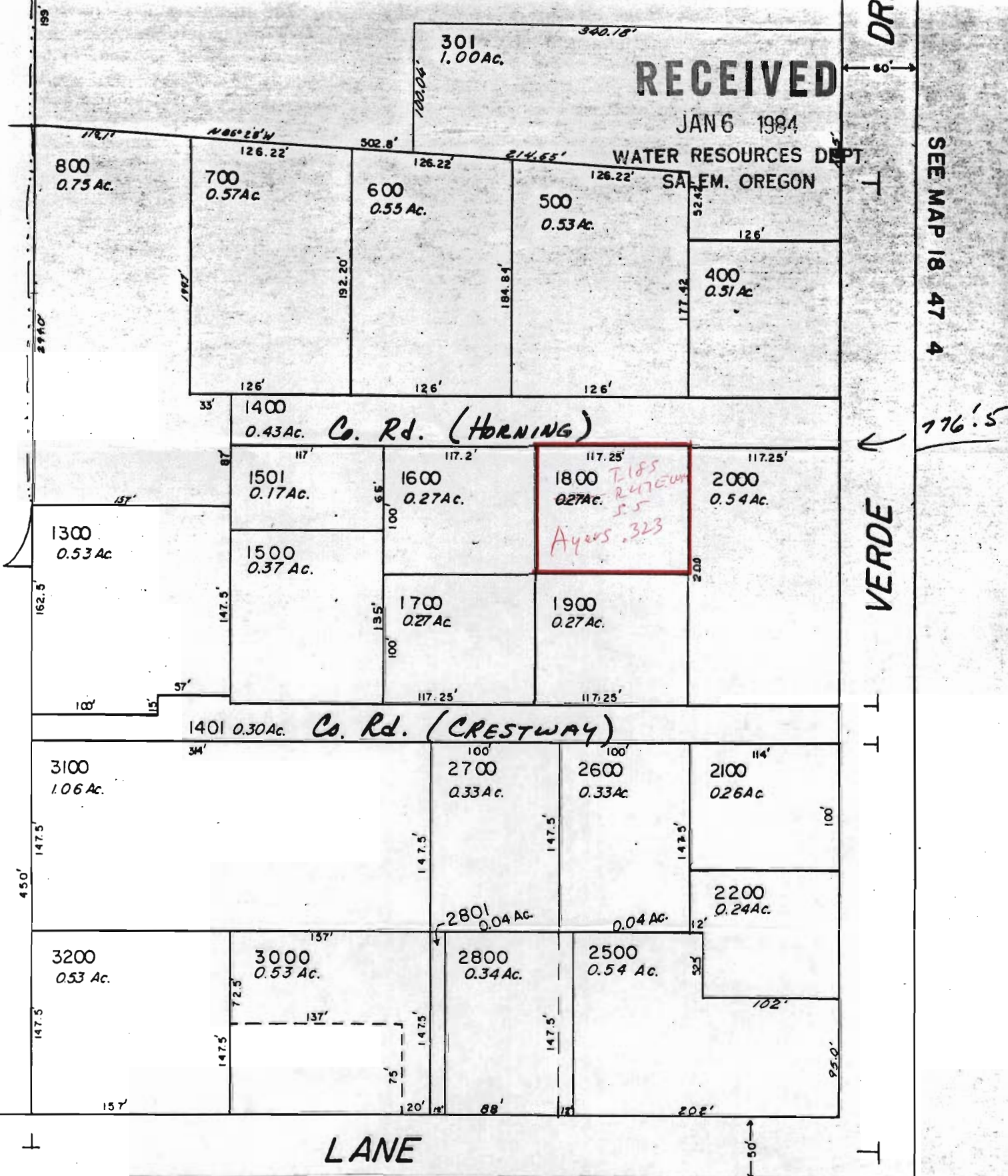
4.782 ac

T-5424

RES.

SUNSET  
CEMETARY

COMMERCIAL



**RECEIVED**

JAN 6 1984

WATER RESOURCES DEPT.  
SALEM, OREGON

SEE MAP 18 47 4

776'.5

VERDE

LANE

MAP 18 47 5AD

FOR ASSESSMENT PURPOSES ONLY

LAND TITLE INSURANCE AGENCY  
This sketch is furnished  
to assist in property location  
and the company does not  
warrant its accuracy  
Scale

18 47 5AA