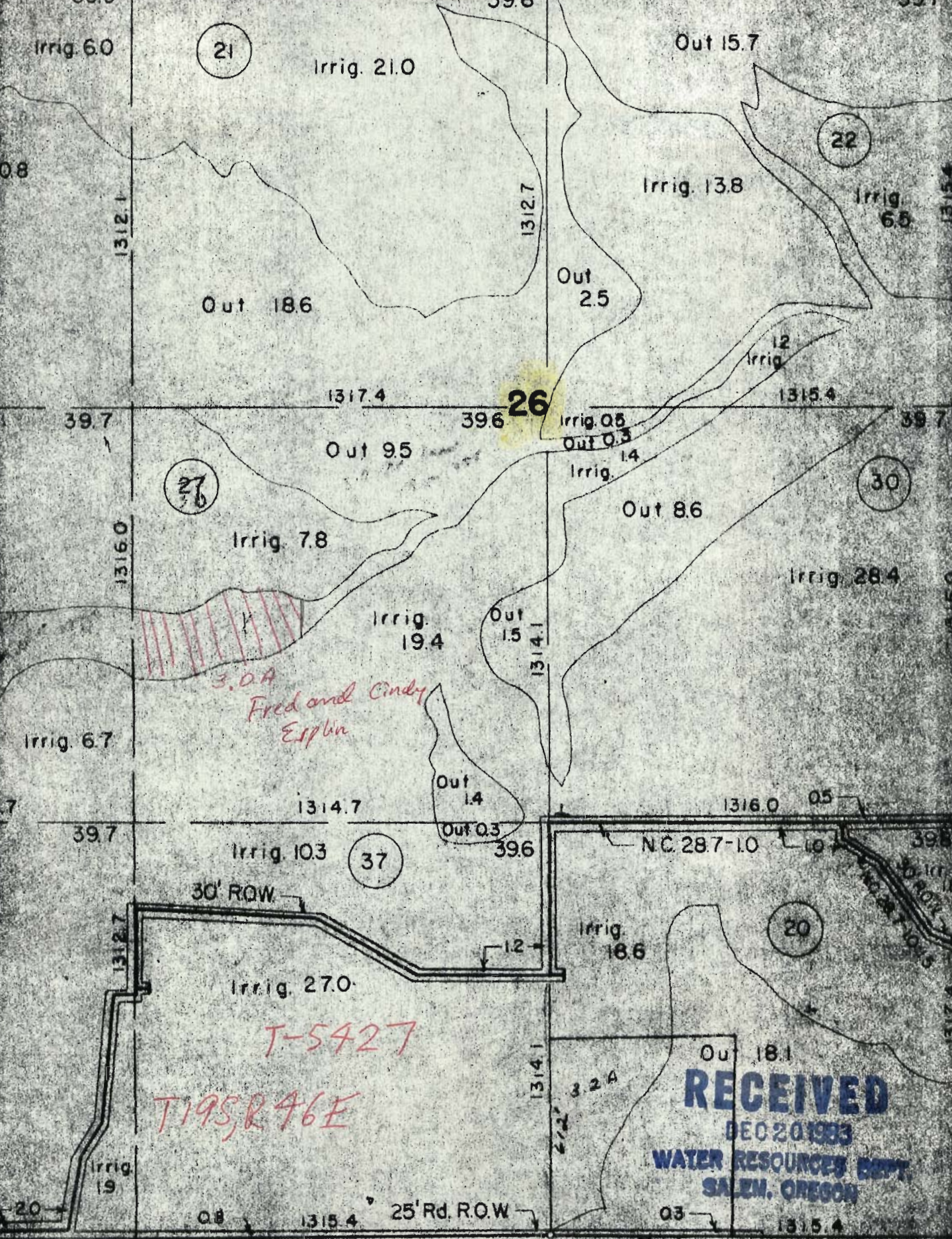


T185, R46E

T-5427

Traced: R. N. 9/18/56  
 Checked: JH 5/8/57



21

Irrig. 21.0

Out 15.7

22

Irrig. 13.8

Irrig. 6.5

Out 18.6

Out 2.5

12 Irrig

1317.4

26

1315.4

39.7

39.6

39.7

Out 9.5

Irrig. 0.5  
Out 0.3

27

Irrig. 7.8

Out 8.6

30

Irrig. 28.4

1316.0

Irrig. 19.4

Out 1.5

3.0A  
Fred and Cindy  
Esplin

1314.1

Out 1.4

Irrig. 6.7

1314.7

1316.0

39.7

39.6

Irrig. 10.3

37

N.C. 287-10

30' ROW

Irrig. 18.6

20

Irrig. 27.0

12

T-5427  
T19SR46E

1314.1

3.2A

Out 18.1

RECEIVED

DEC 20 1983

WATER RESOURCES DEPT.  
SALEM, OREGON

Irrig. 1.9

0.8

1315.4

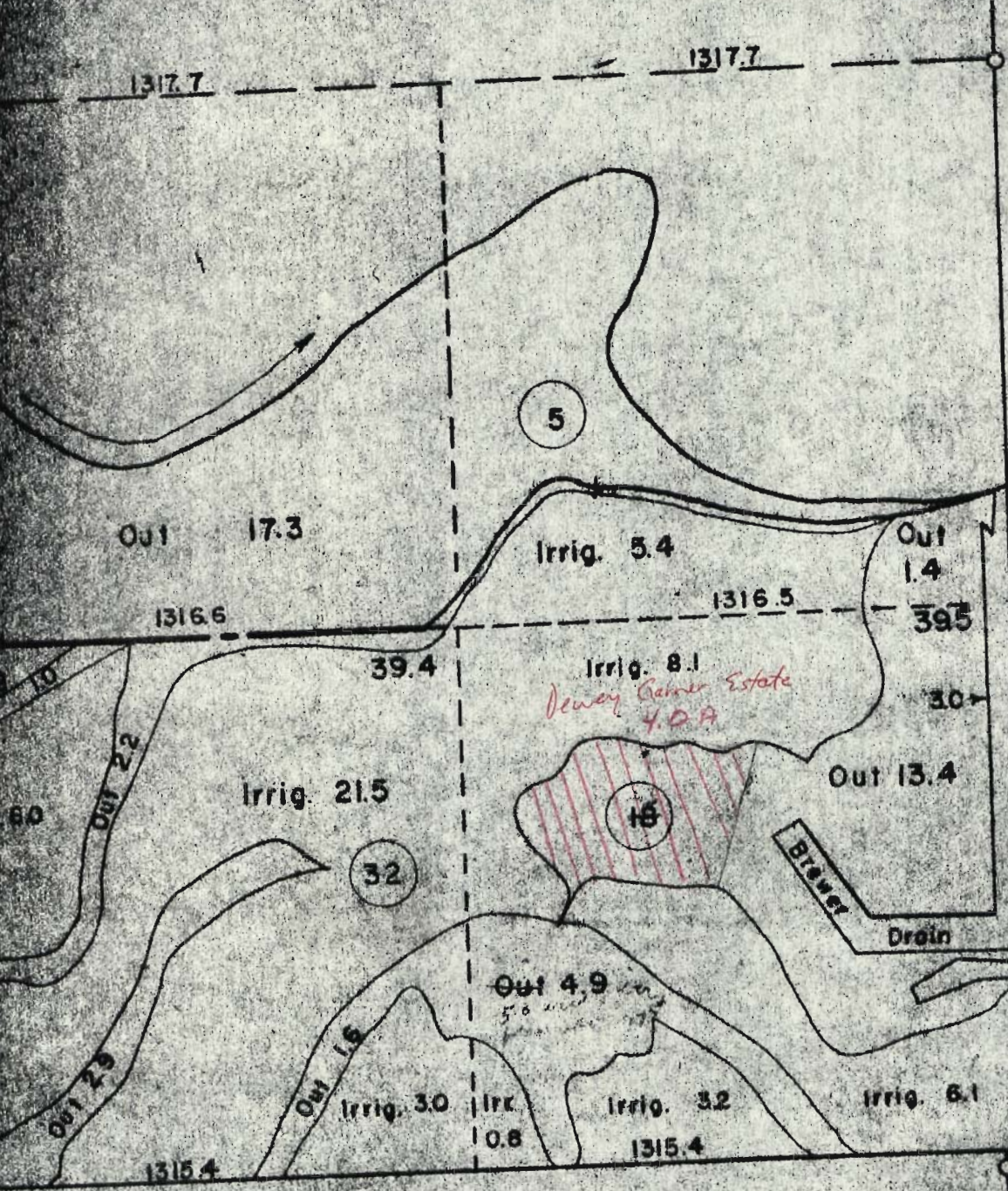
25' Rd. R.O.W.

0.3

1315.4

SECRET





**RECEIVED**

DEC 20 1983

WATER RESOURCES DEPT.  
SALMON, OREGON

**SEC. 32 - T.20S. - R.46E.**