

RECEIVED

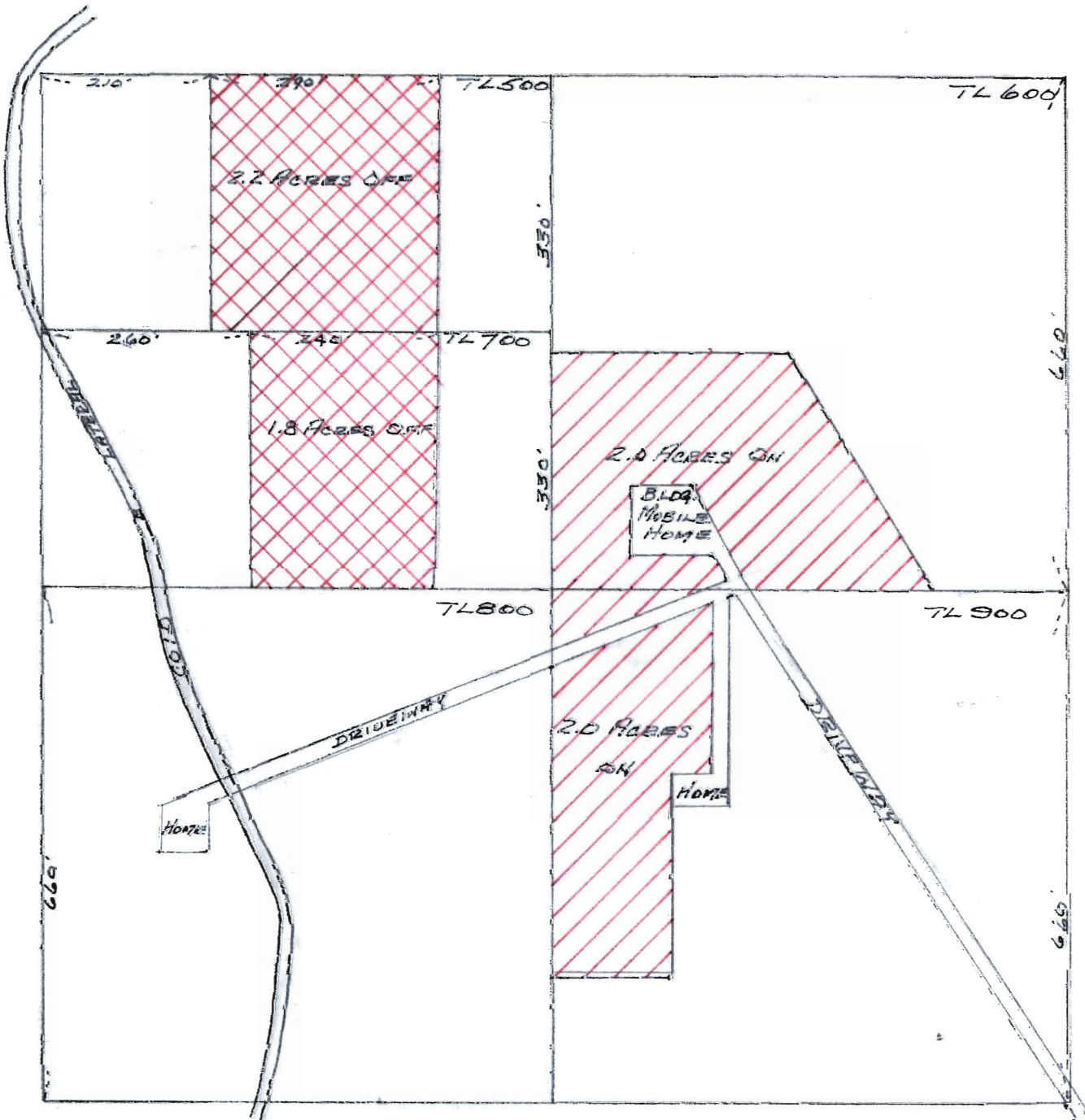
MAR 30 1984

WATER RESOURCES DEPT.  
SALEM, OREGON

T-5458

SEC. 6, T 15 S., R. 13 E N M  
SE 1/4 - NW 1/4

SCALE 1" = 200'



TAX LOT 500 - M. PATRICK & G. SCOTT  
 TAX LOT 600 - D. HAMMACK  
 TAX LOT 700 - D. CAMPBELL

TAX LOT 800 - D. SALINAS  
 TAX LOT 900 - T. CAMARILLO