

15

T-5459

1100

SECTION 8  
&  
MIDPOINT

3600  
112.75 Ac.

SE

3800  
2.90 Ac.

3801  
0.61 Ac.

.67  
WILBUR

3902  
5.19 Ac.

3900  
0.88 Ac.

NE 1/4 SE 1/4

3700  
2.22 Ac.

3901  
0.63 Ac.

T. 18 S

3903  
0.55 Ac.

R. 47 E, WM

3600

4000  
9.62 Ac.

S. P

OWYHEE

SUNSET

4901  
1.54 Ac.

4900  
1.23 Ac.

RECEIVED

MAR 20 2004

RESOURCES DEPT.  
SALEM, OREGON

4100  
9.30 Ac.

4101  
0.32 Ac.

4800  
4.81 Ac.

4700  
1.16 Ac.

4500

4400  
2.28 Ac.

4401  
2.20 Ac.

4200  
9.19 Ac.

4300  
8.09 Ac.

3602  
1.0 Ac.

3601  
0.51 Ac.

4301  
8.10 Ac.

BUTLER

BLVD.



**RECEIVED**

MAR 30 1994

WATER RESOURCES DEPT.  
SALEM, OREGON

F5959

T. 17 S  
R. 47 E, W/4  
SECTION  
MIDPOINT

5 ACRES  
WATKINS

Excluded from 01D  
9 AC Geo D Watkins  
15 AC to 587  
12 AC to 206

Thayer 15 Ditch  
Pastor C  
Irrig. 5.4

Irrig. 297

Irrig. 27.4

Out 19.4

Out 17.5

Irrig. 156

Out 4.8

Irrig. 3.5

Out 2.2

Irrig. 6.0

Out 4.6

Out 6.8

Out 1.1

Irrig. 30.2

Geo D Watkins

Irrig. 125

Irrig. 30.2

Out 6.4

Pastor C  
Irrig. 5.4

Irrigation District  
39.8

Irrigation District  
39.8

Irrigation District  
39.4

Irrigation District  
39.4

Irrigation District  
39.4

1320.0

1313.4

39.2

1307.5

04

36

1314.1

39.3

14

1.7

Out 5.4

Out 7.1

Out 0.4

Out 0.2

16

30

27

10

36  
17

31

1.9

1316.0

1311.4

OUT

OUT

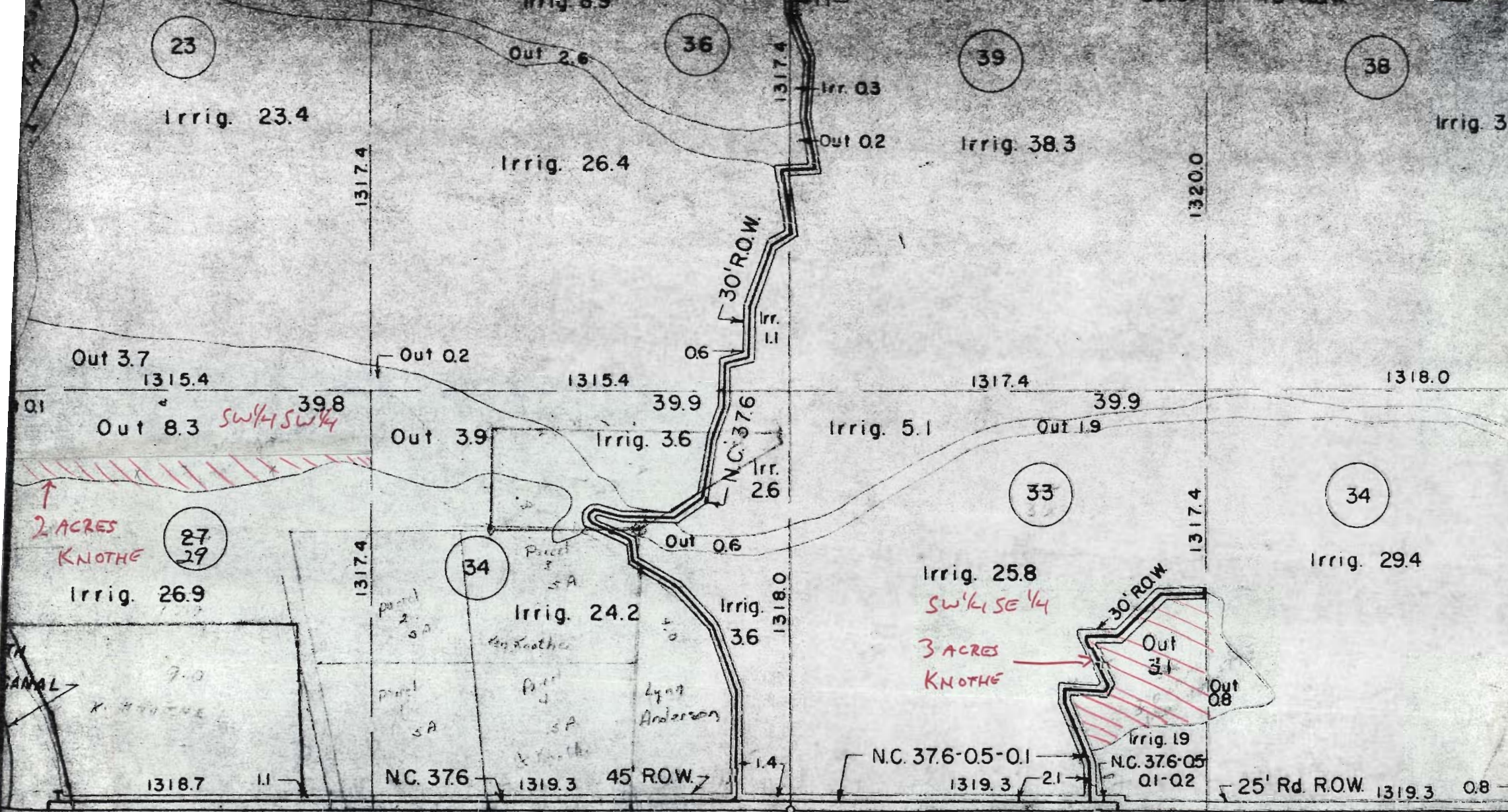
RIVER

1311.4

39.8

1310.8

1314.1



↑  
2 ACRES  
KNOTHE

3 ACRES  
KNOTHE

T-5459

SEC. 36 - T. 18 S. - R. 46 E

39

Irrig. 39.2

1319.3

Out 6.5

T-5459

Irrig. 32.8

37

Irrig. 37.5

1314.7

RECEIVED

MAR 30 1984

WATER RESOURCES DEPT.  
SALEM, OREGON

T. 195  
R. 46E, W.M.  
SECTION  
MIDPOINT

NC. 33.1

0.4

1310.1 NC. 33.1-1.6

13

1320.0

0.5 1310.1 30' R.O.W. 39.5

0.4

Out 39.5  
35

0.9

34

Irrig. 31.8

1314.7

35

Irrig. 27.7

NC. 33.1

37

Irrig. 30.4

10  
30' R.O.W.

1315.4

Irrig. 6.9

1305.5

1322.6

3 ACRES  
McKOWAN

25

Irrig. 22.2

39.4

Irrig. 1.0

0.4

19

Irrig. 18.3

Out 12.4

12.2 AC  
K.R. McGOWAN

Irrig. 1.8

Out 3.4

1316.0

Out 5.6  
Irrig. 1.0

Out 1.0

24

Irrig. 4.1

Out 3.6

Out 8.7

Irrig. 19.3  
12.3

1302.2 30 Rd. R.O.W.

1302.8

0.9

1323.0

R.N. 1/28/57

J.H. 5/8/57

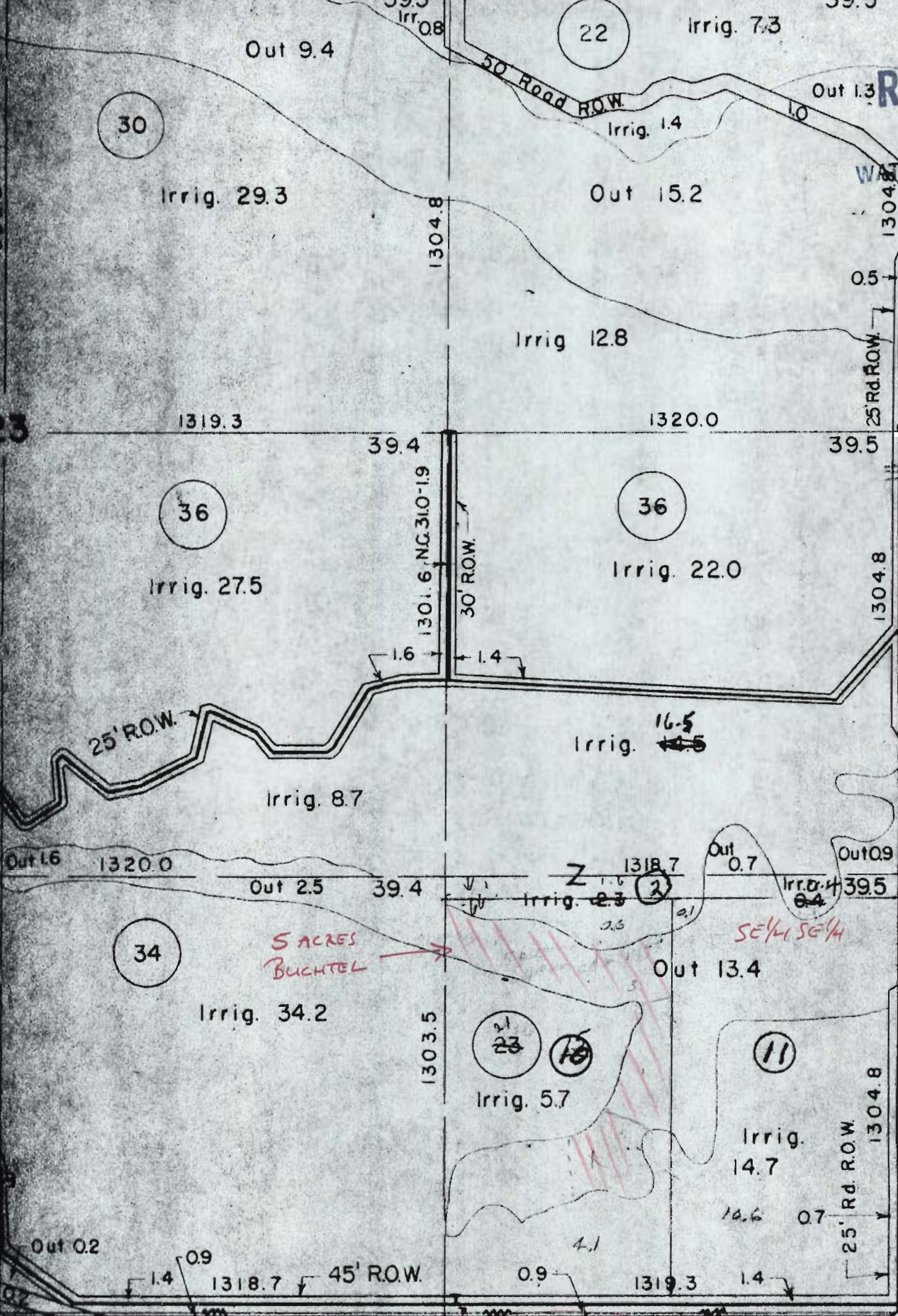
RECEIVED

MAR 30 1984

WATER RESOURCES DEPT.  
SALEM, OREGON

T-5459





**RECEIVED**

MAR 30 1984

WATER RESOURCES DEPT  
SALEM, OREGON

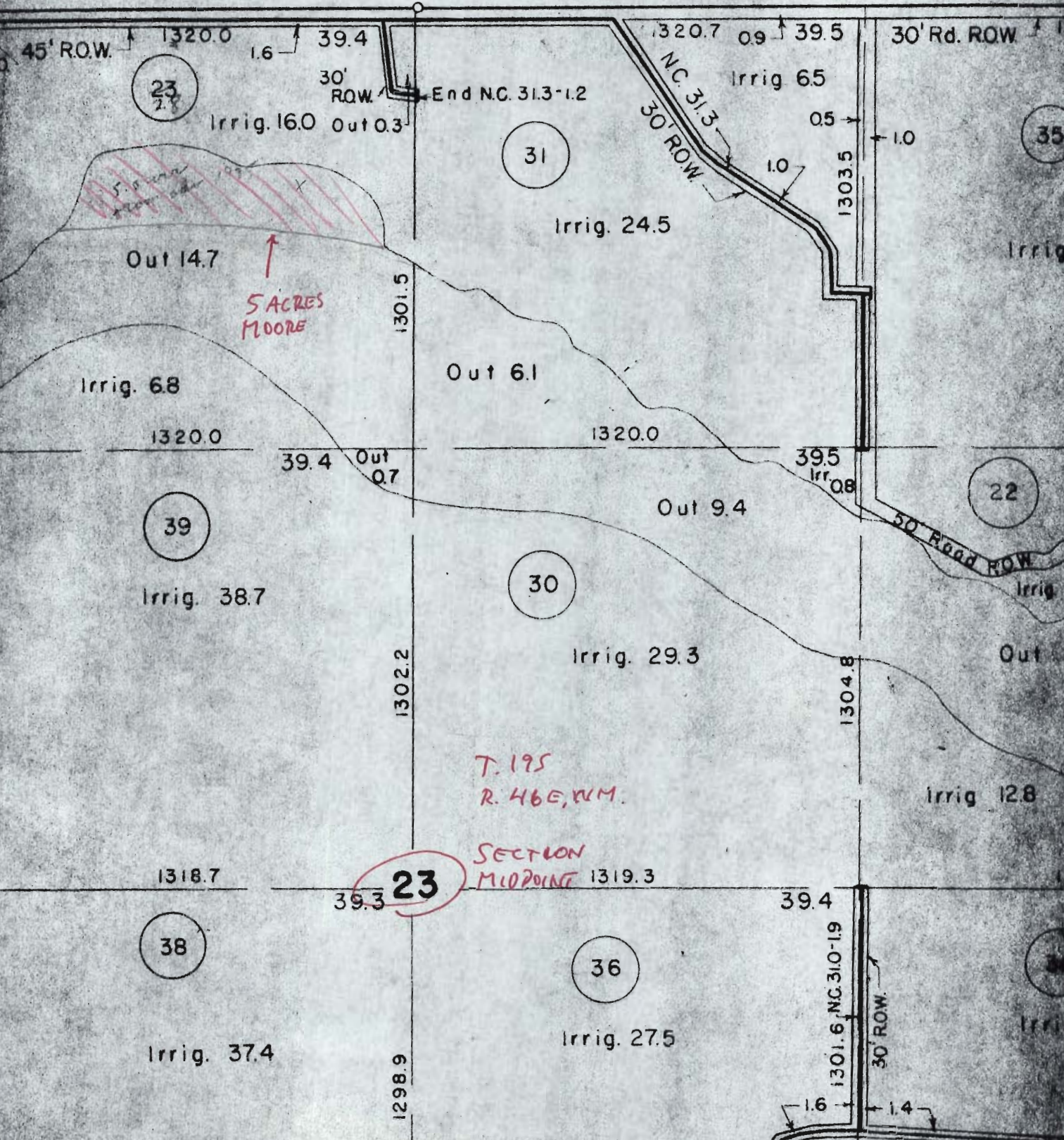
*T-5459*

**SEC. 23 - T. 19S. - R. 46E. - W. M.**

RECEIVED

MAR 30 1984  
WATER RESOURCES DEPT.  
SALEM, OREGON

T-5459



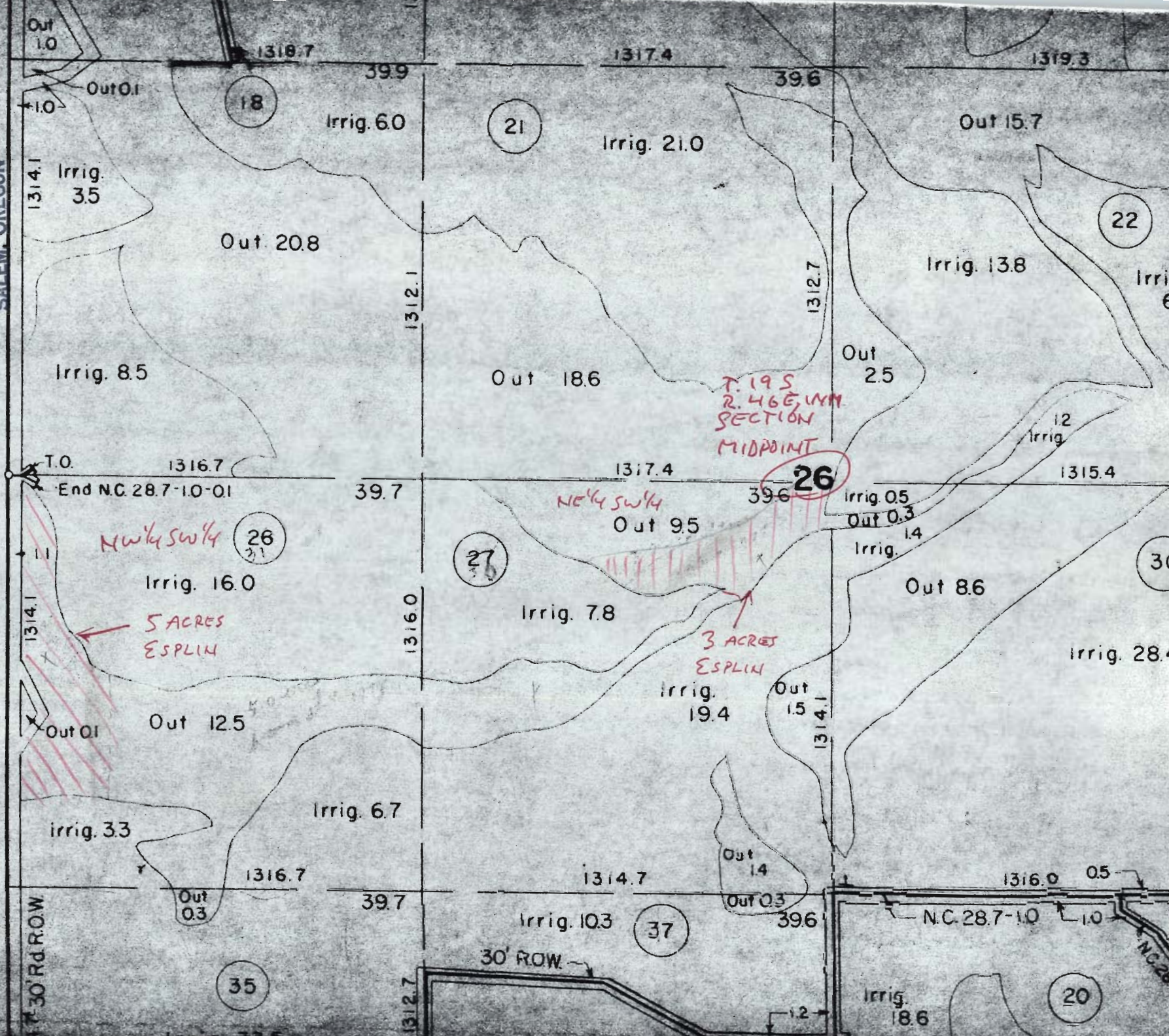
RECEIVED

MAR 30 1984

WATER RESOURCES DEPT.

SALEM, OREGON

T-5459



Out 1.0

1318.7

1317.4

1319.3

Out 0.1

39.9

39.6

1314.1

Irrig. 35

18

Irrig. 6.0

21

Irrig. 21.0

Out 15.7

Out 20.8

1312.1

1312.7

Irrig. 13.8

22

Irrig. 8.5

Out 18.6

Out 2.5

T. 19.5  
2.46 ELM  
SECTION  
MIDPOINT

12  
Irrig.

T.O.

1316.7

1317.4

1315.4

End N.C. 28.7-10-01

39.7

39.6

26

Irrig. 0.5

Out 0.3

NW 1/4 SW 1/4

26

NW 1/4 SW 1/4

Out 9.5

Irrig. 1.4

Irrig. 16.0

27

Irrig. 7.8

Out 8.6

5 ACRES  
ESPLIN

3 ACRES  
ESPLIN

Irrig. 28.0

1314.1

1316.0

1314.1

Out 0.1

Out 12.5

Irrig. 19.4

Out 1.5

Irrig. 3.3

Irrig. 6.7

Out 1.4

Out 0.3

1316.7

1314.7

1316.0

30' Rd ROW

Out 0.3

39.7

39.6

N.C. 28.7-10

30' ROW

Irrig. 10.3

37

Irrig. 18.6

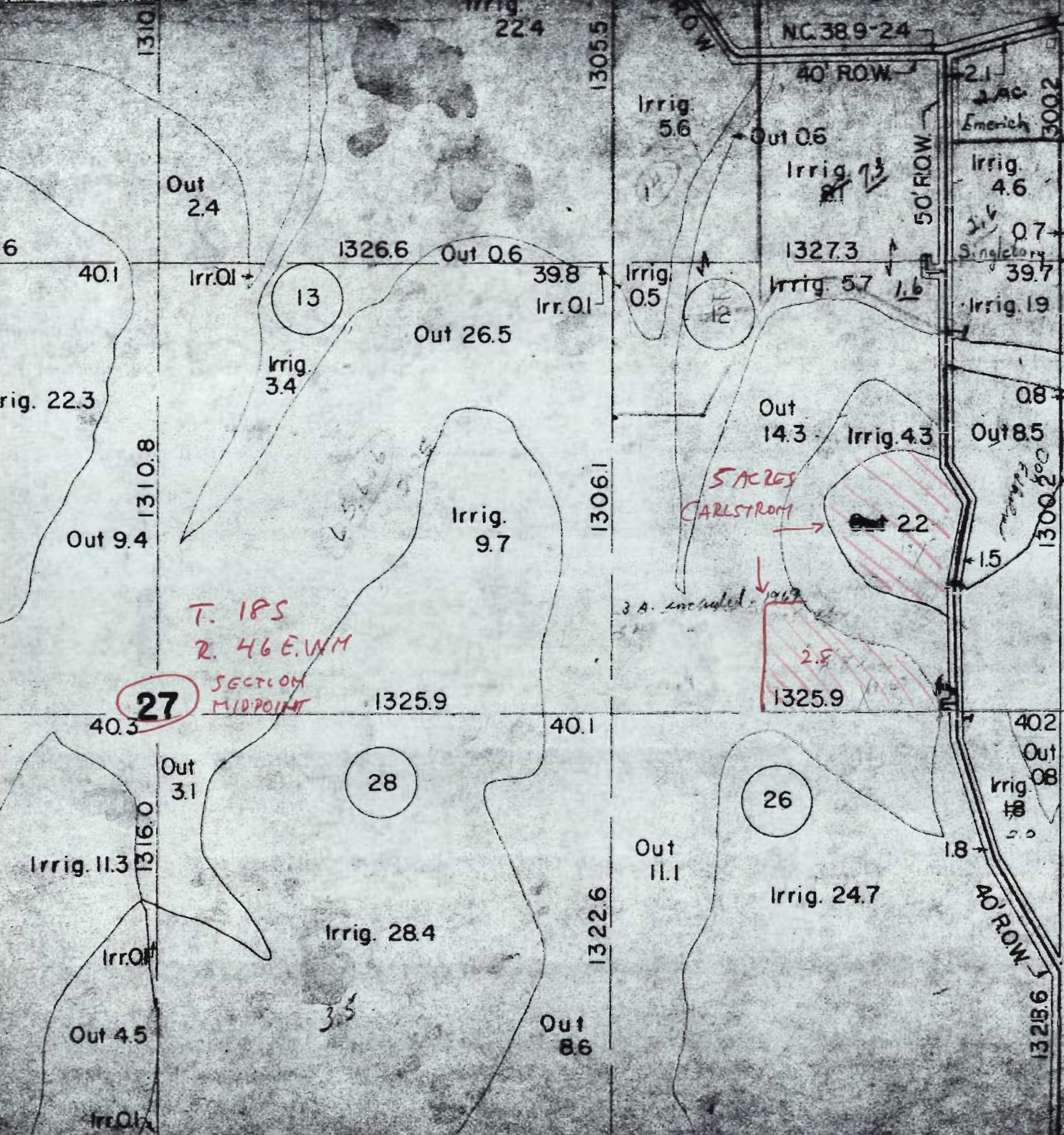
35

20

1312.7

1.2





**RECEIVED**  
 MAR 30 1984  
 WATER RESOURCES DEPT  
 SALEM, OREGON

F-5459

RECEIVED

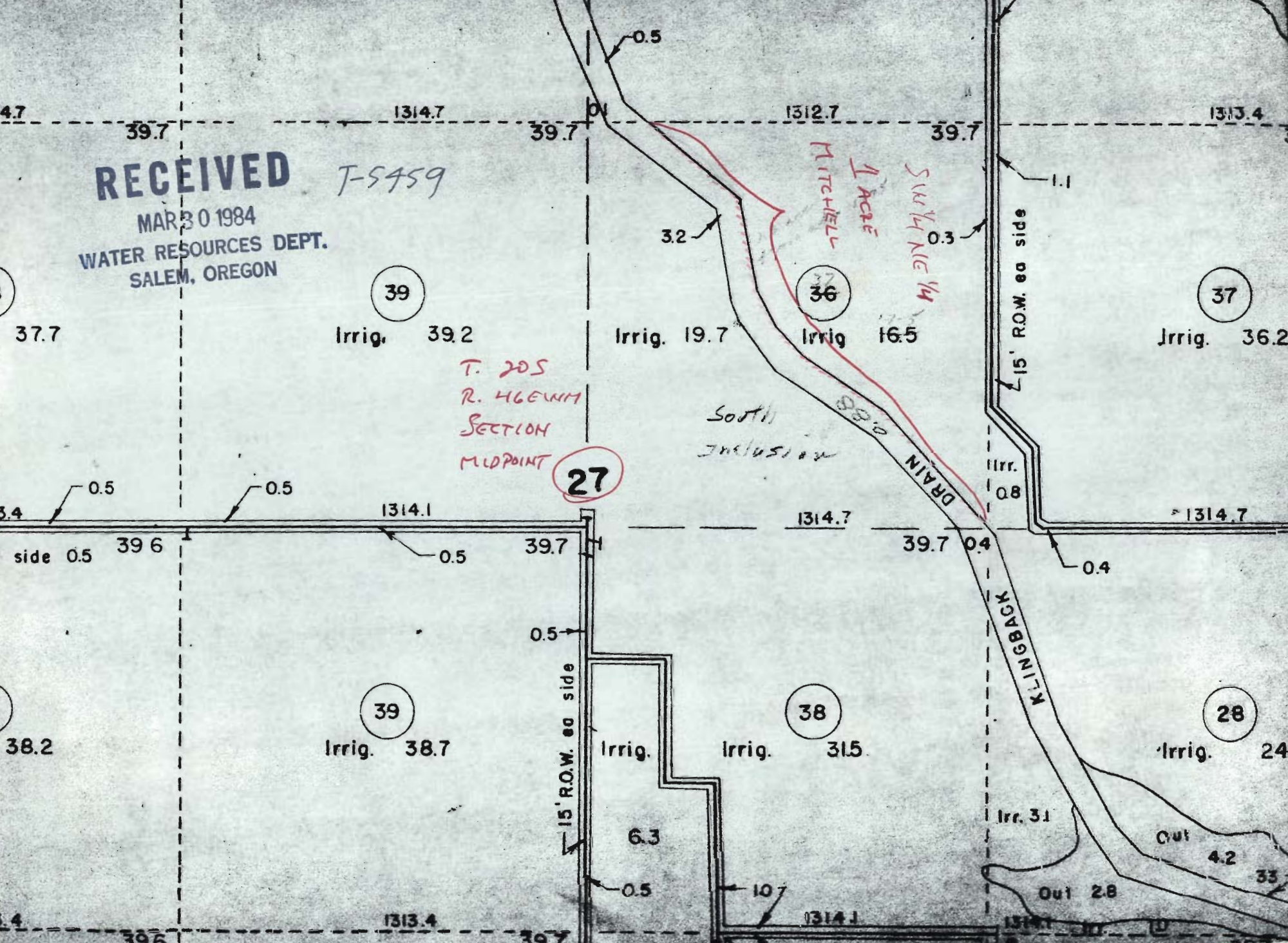
MAR 30 1984  
WATER RESOURCES DEPT.  
SALEM, OREGON

T-5459

T. 20S  
R. 46E W/4  
SECTION  
MIDPOINT

MITCHELL  
1/4 ACRES  
SOUTH 1/4

South  
Inclusion



39

Irrig. 39.2

36

Irrig. 19.7

Irrig. 16.5

37

Irrig. 36.2

27

39

Irrig. 38.7

38

Irrig. 31.5

28

Irrig. 24

15' R.O.W. ea side

15' R.O.W. ea side

DRAIN  
KLINBACK

39.7

0.5

1314.7

1312.7

1313.4

39.7

39.7

0.5

0.5

1314.1

1314.7

1314.7

side 0.5

39.6

0.5

39.7

39.7

0.5

Irr. 0.8

0.4

Irrig.

Irrig.

Irr. 3.1

6.3

0.5

10.7

1314.1

1314.1

Out 4.2

Out 2.8

3.3

39.6

1313.4

39.7

1314.1

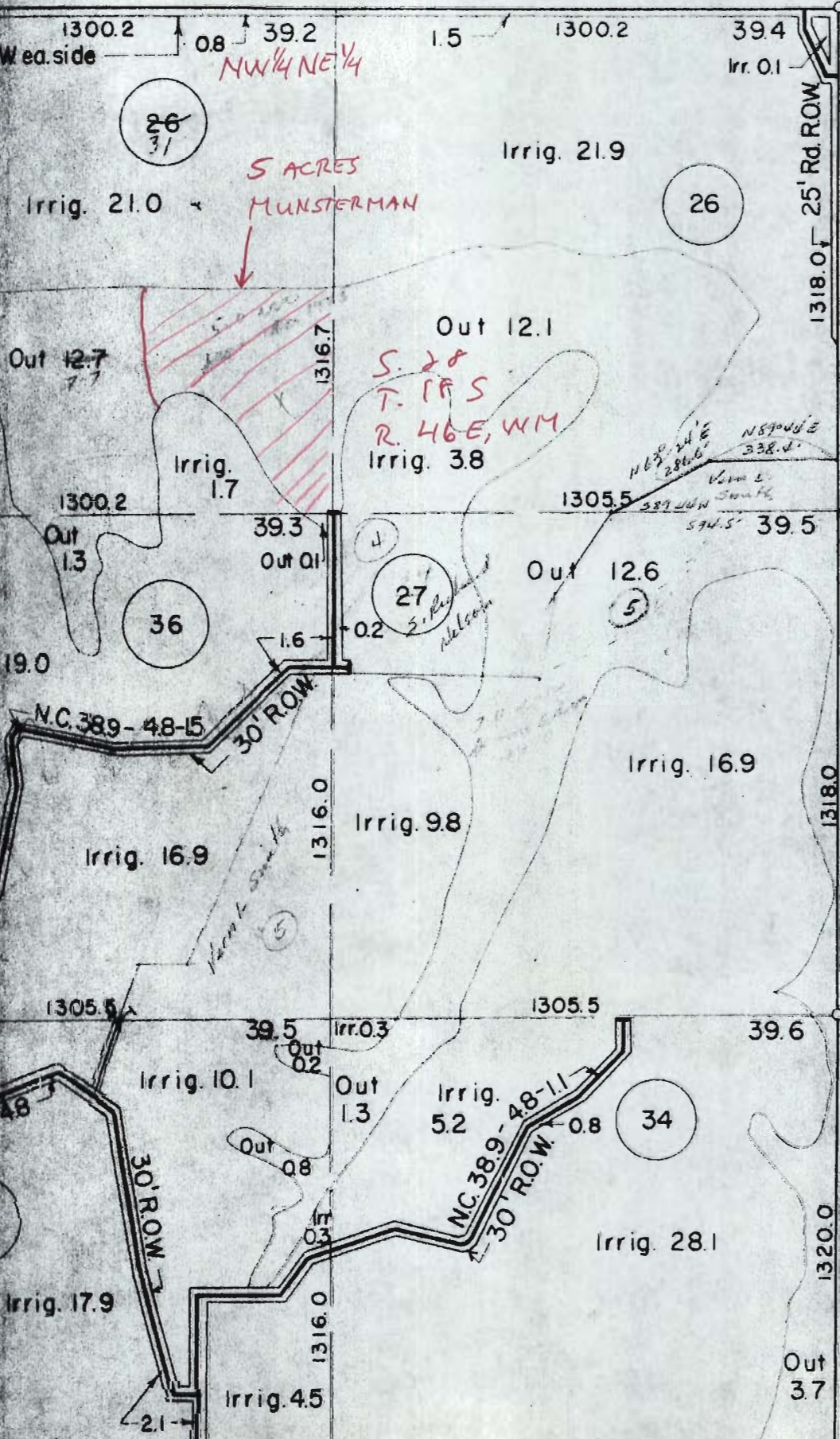
1314.1

RECEIVED

MAR 30 1984

WATER RESOURCES DEPT.  
SALEM, OREGON

T-5459



1318.0' 25' Rd. ROW

1318.0

1320.0

Out 37

S. 28 T. 18 S R. 46 E, WM

NW 1/4 NE 1/4

S ACRES  
MUNSTERMAN

S. 28  
T. 18 S  
R. 46 E, WM

26  
31

26

36

27  
S. 28 T. 18 S R. 46 E, WM

5

34

1300.2  
Wed. side

0.8 39.2

1.5 1300.2

39.4  
Irr. 0.1

Irrig. 21.0

Irrig. 21.9

Out 12.7

Out 12.1

Irrig. 1.7

Irrig. 3.8

1300.2

1305.5

Out 1.3

Out 0.1

Out 12.6

39.5

19.0

N.C. 389-48-15  
30' ROW

Irrig. 16.9

Irrig. 16.9

Irrig. 9.8

1305.5

1305.5

Irrig. 10.1

Irr. 0.3

Irrig. 5.2

Irrig. 28.1

39.6

Irrig. 17.9

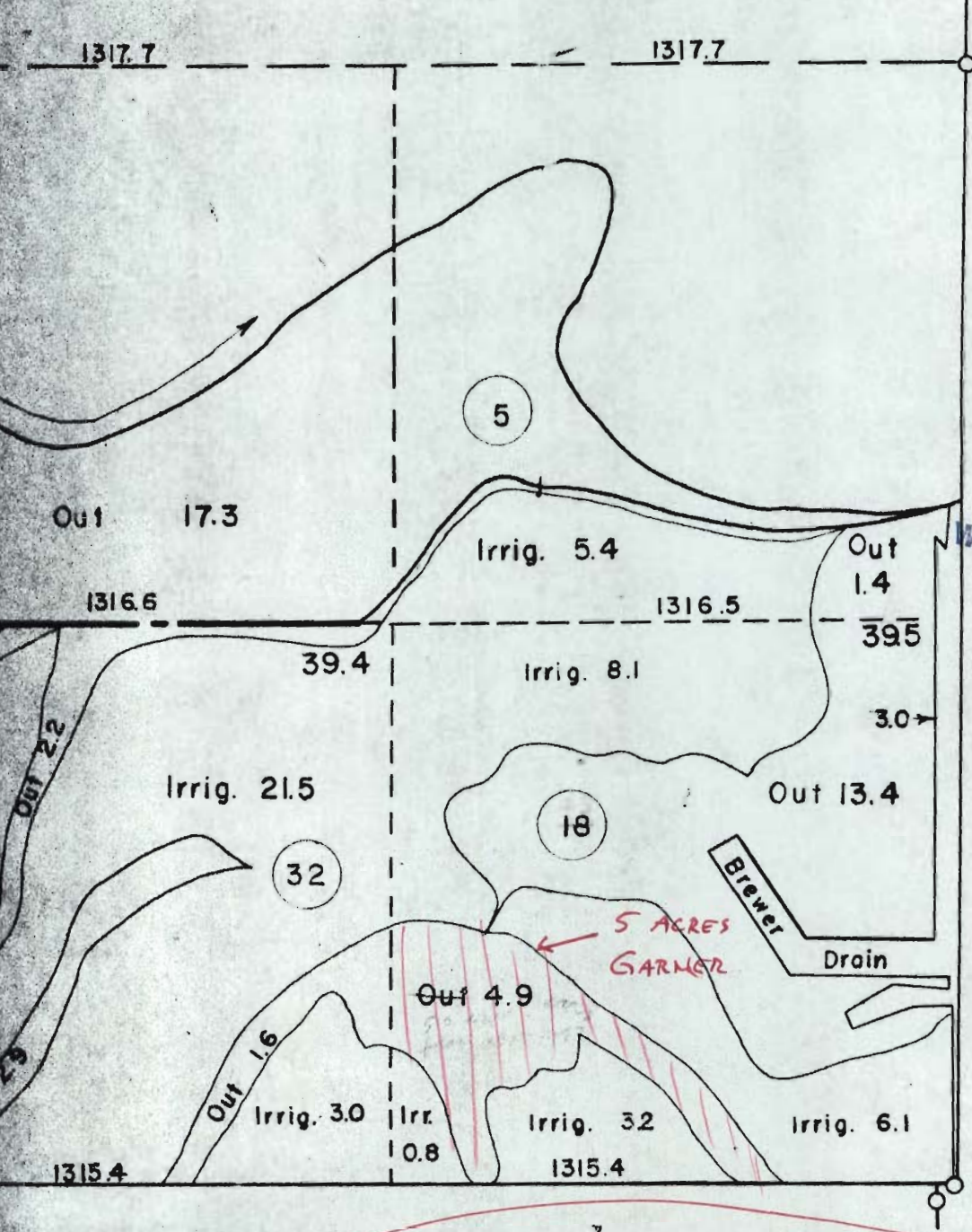
Irrig. 4.5

2.1

N.C. 389-48-11  
30' ROW

1316.0

1320.0



T-5459

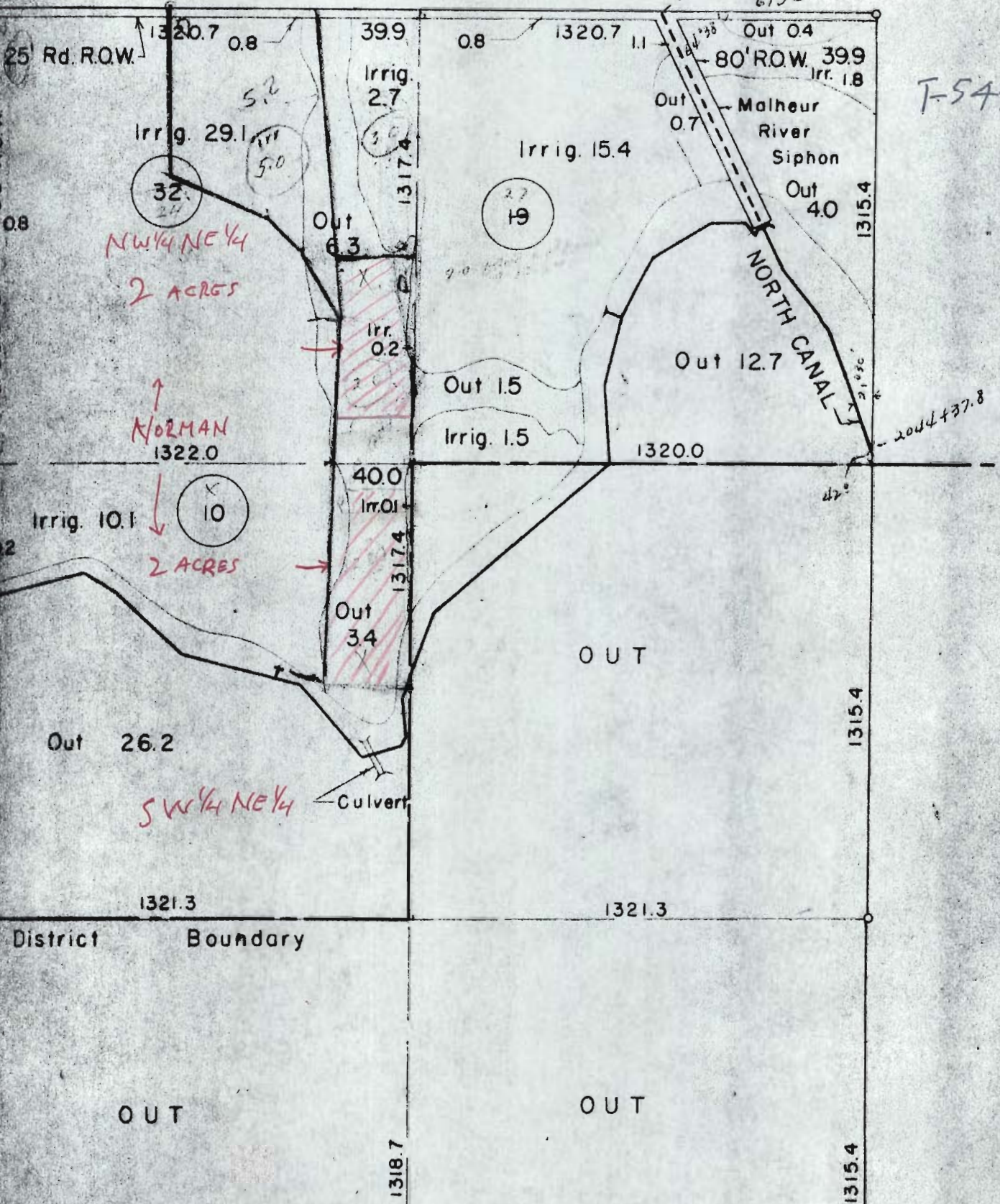
**RECEIVED**  
 MAR 30 1984  
 WATER RESOURCES DEPT.  
 SALEM, OREGON

SE 1/4 SE 1/4

**SEC. 32 - T.20S. - R.46E.**

S. 35  
T. 185  
R. 46 E., WM

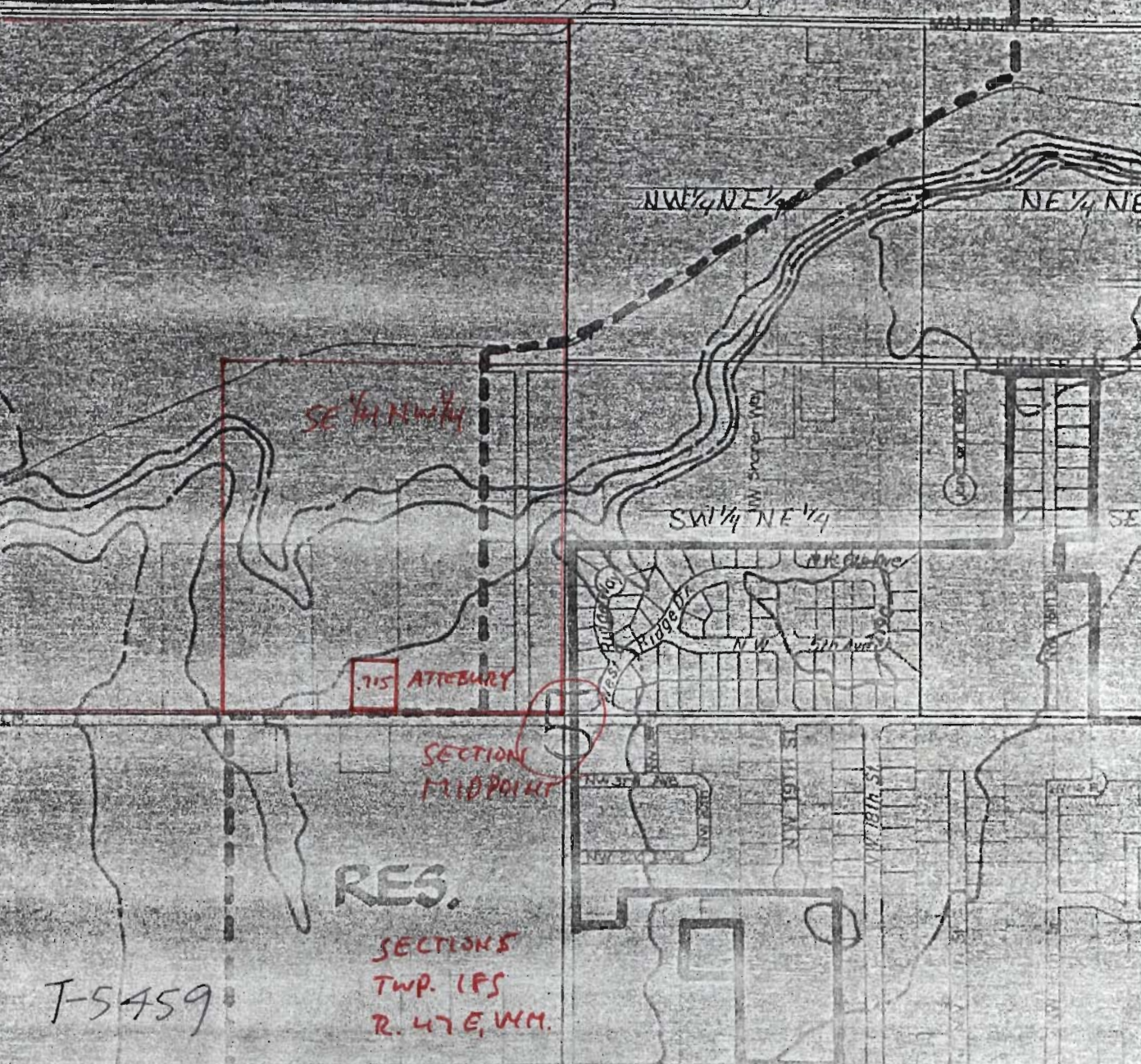
T-5459



RECEIVED

MAR 30 1984

TELE. RESOURCES DEPT.  
SALEM, OREGON



SE 1/4 NW 1/4

715 ATTIBURY

SECTION  
MIDPOINT

RES.

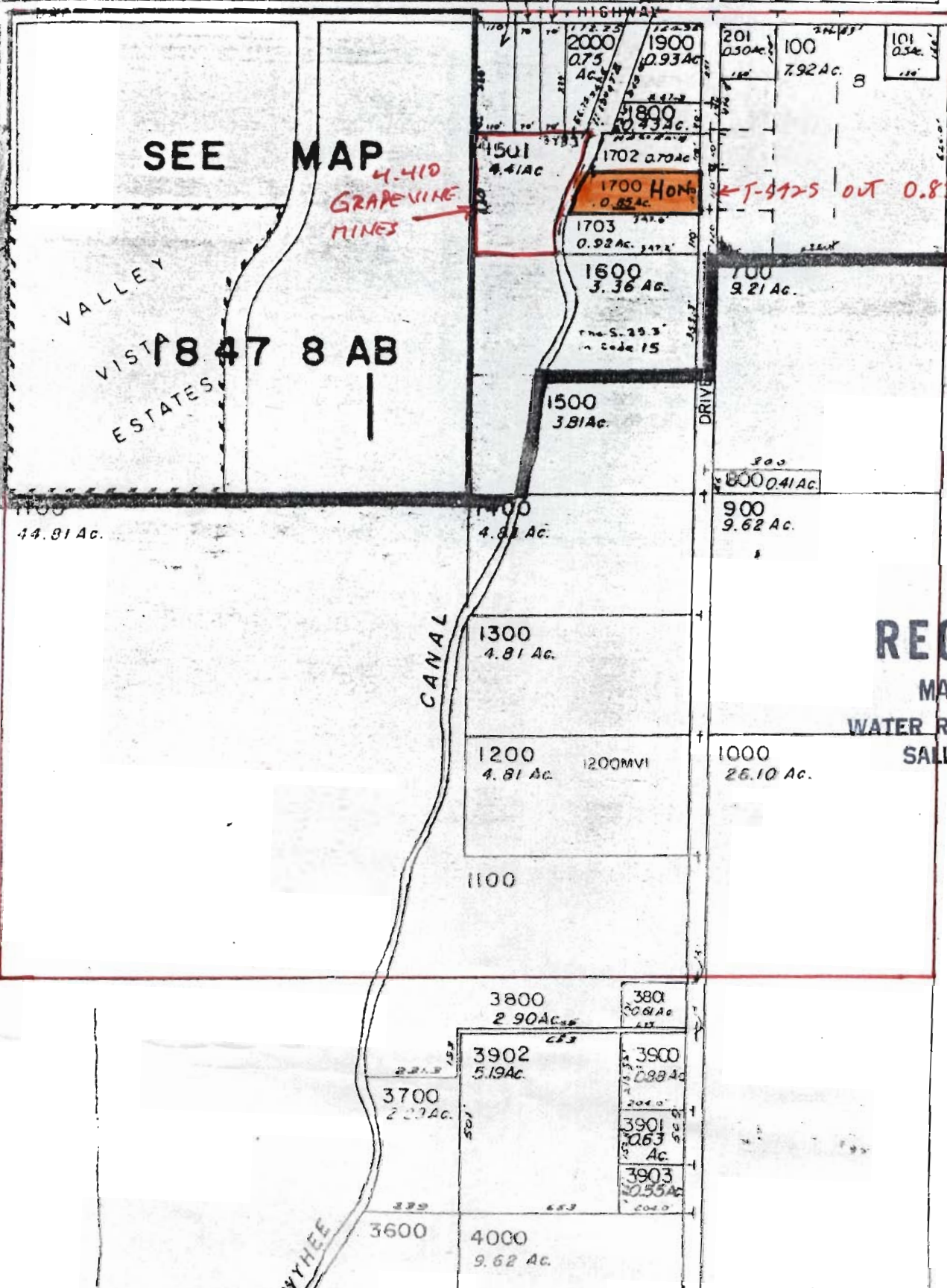
SECTIONS  
TWP. 18S  
R. 47E, WM.

T-5459

T. 1F  
R. 47 GWM  
S. 8  
NE 1/4 NE 1/4

T-5459

- Revised on
- 5-4-76
  - 4-3-77
  - 7-27-77
  - 8-11-77
  - 1-24-78
  - 3-7-78
  - 5-26-78
  - 9-29-78
  - 10-4-78
  - 6-21-79
  - 10-10-79



SEE MAP

4.410  
GRAPEVINE  
MINES

T-5425 OUT 0.850 ac

18 47 8 AB

RECEIVED

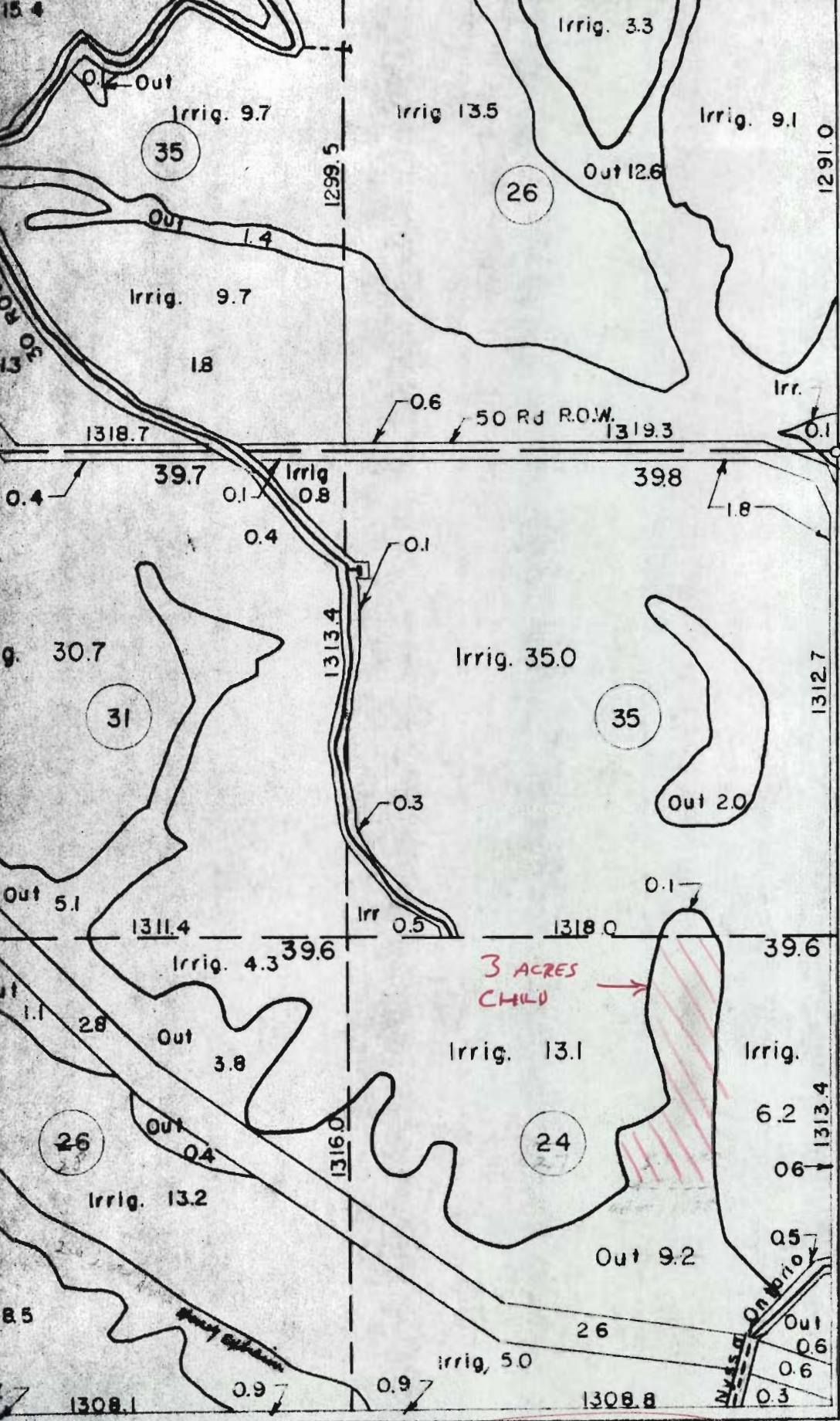
MAR 30 1984

WATER RESOURCES DEPT.  
SALEM, OREGON

SEE MAP 18 47 9BB

SEE MAP 18 47 9

- DEAD NO.
- 4600
  - 1701
  - 300
  - 400
  - 500
  - 500
  - 221
  - 200
  - 2308
  - 2301
  - 2302
  - 2304
  - 2200
  - 2201
  - 2202
  - 2203
  - 2204
  - 2205
  - 2206
  - 2207
  - 2208
  - 2209
  - 2210
  - 2212
  - 2213



F-5459

**RECEIVED**

MAR 30 1984

WATER RESOURCES DEPT  
SALEM, OREGON

3 ACRES  
CHILD →

SE 1/4 SE 1/4

**SEC. 2 T20S. R46E.**



RECEIVED

MAR 30 1984

WATER RESOURCES DEPT.  
SALEM, OREGON

F-5459

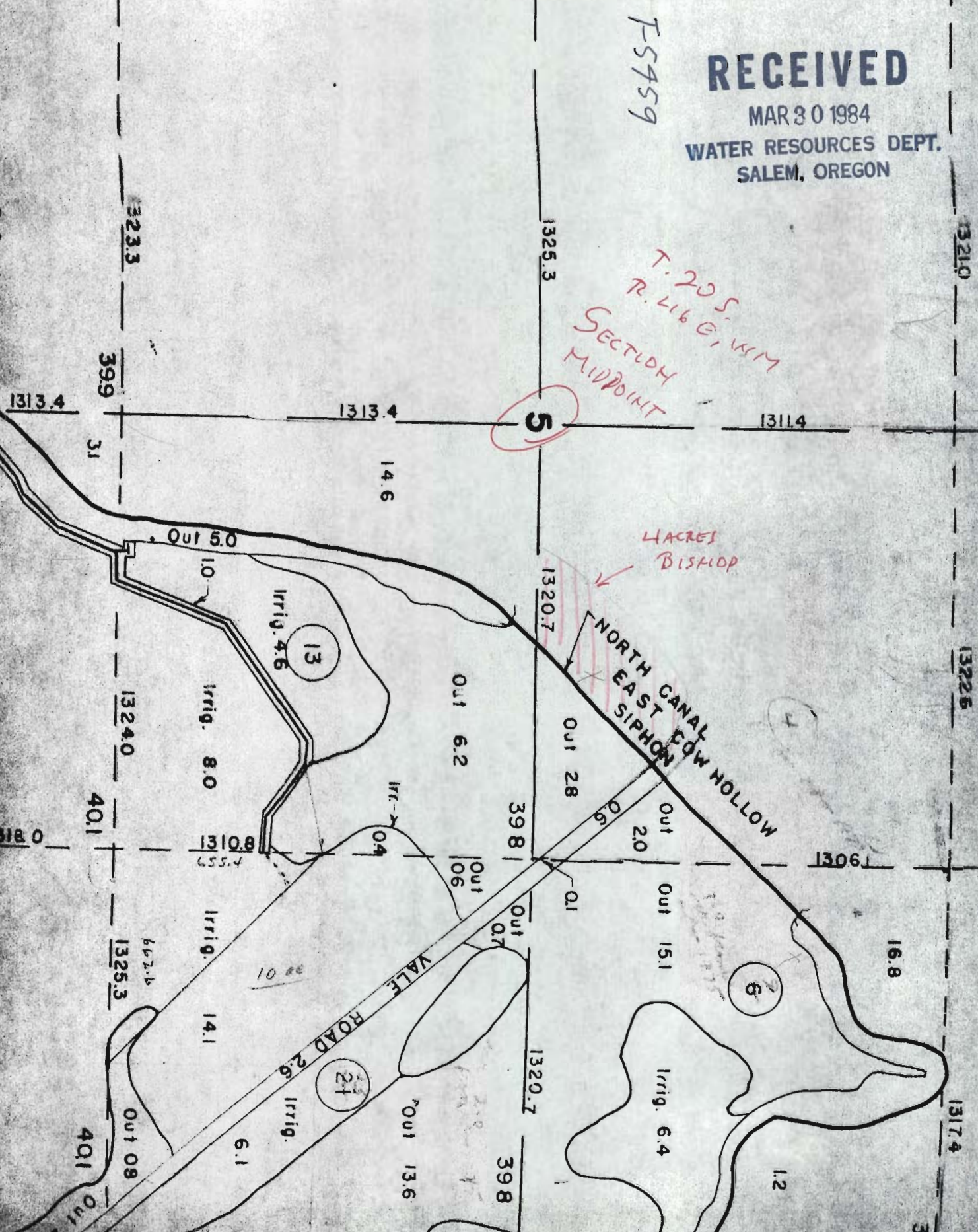
T. 20 S.  
R. 16 E. 11 M  
SECTION  
MIDPOINT

5

4 ACRES  
BISHOP

NORTH CANAL  
EAST EDW HOLLOW  
SIPHON

VALE ROAD



RECEIVED

MAR 30 1984

WATER RESOURCES DEPT.  
SALEM, OREGON

T-5759

