

16-12-8

1.3 ON
(c. 26508, 9/1900)

2.0 ON
(c. 26050, 10/1913)

5.8 ON
(c. 31410, 9/1900)

3.2 OFF
(c. 26508, 9/1900)

2.0 OFF (c. 26050, 10/1913)

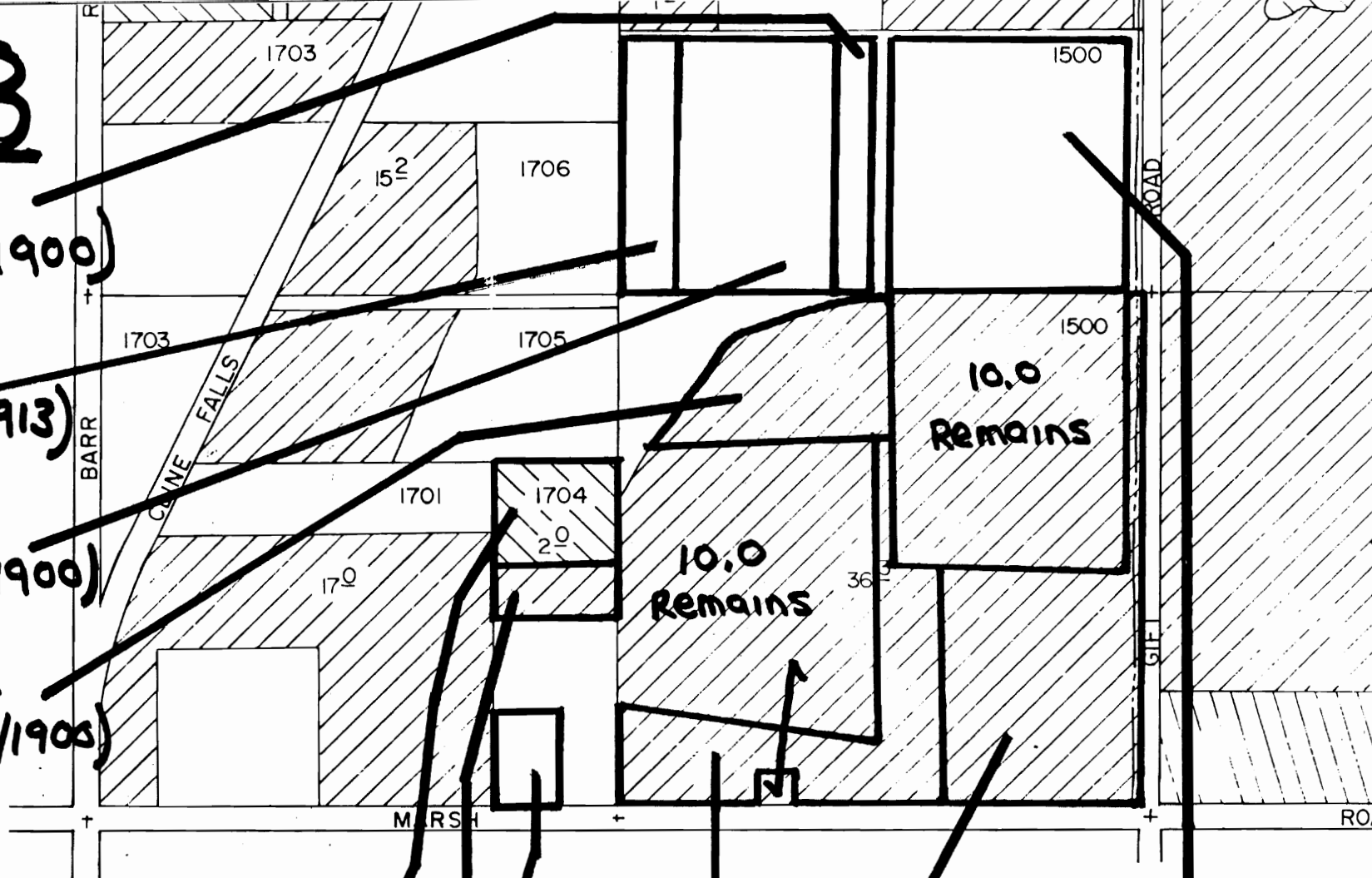
1.0 OFF (c. 26508, 9/1900)

1.0 ON (c. 26508, 9/1900)

5.8 OFF (c. 31410, 9/1900)

7.3 OFF (c. 26508, 9/1900)

9.2 ON
(c. 26508, 9/1900)



RECEIVED

JUL 2 1984

WATER RESOURCES DEPT
SALEM, OREGON

T-5464 AMENDED APPLICATION