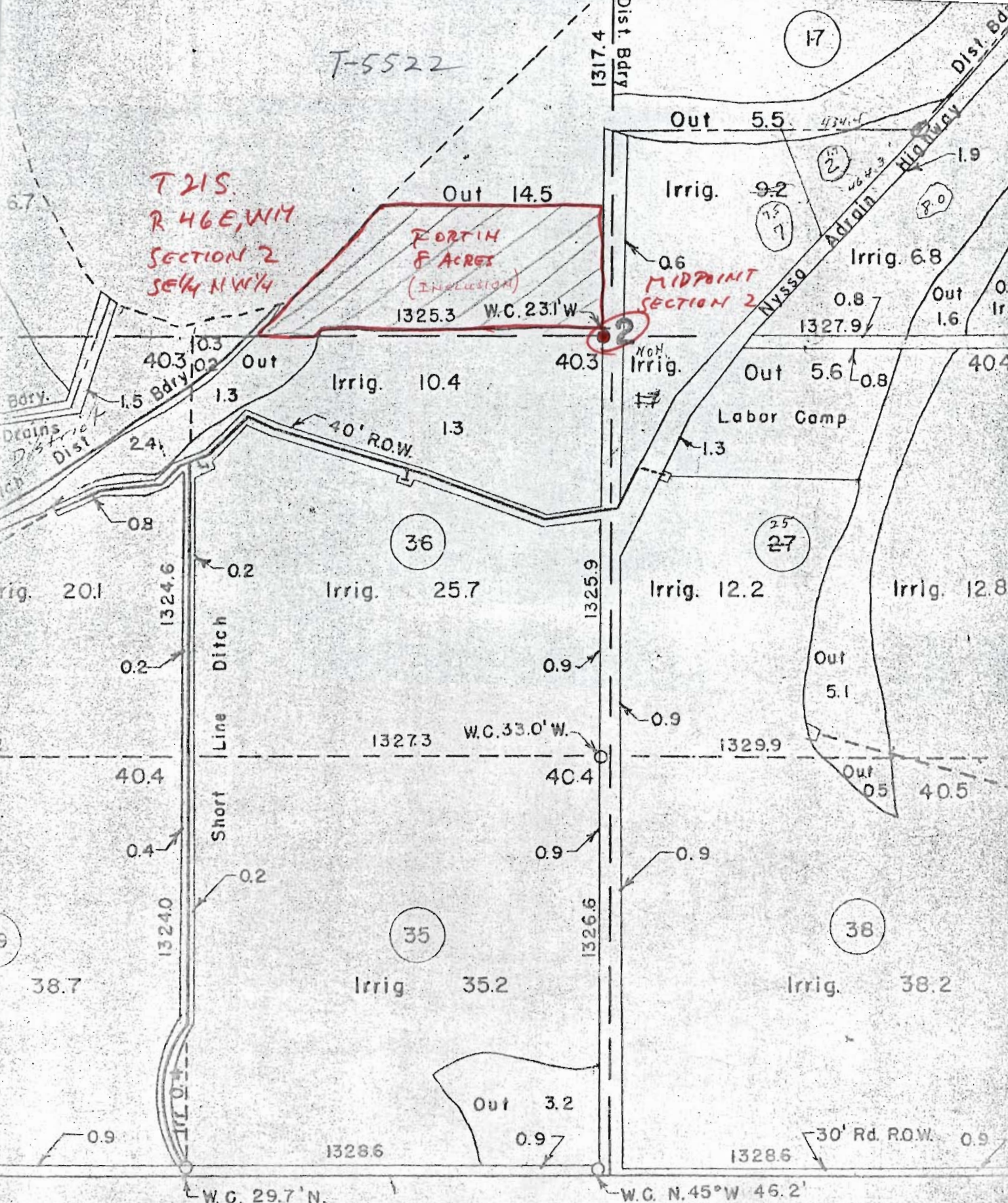


T-5522

T 21 S.  
R 46 E, W 1/4  
SECTION 2  
SE 1/4 N 1/4

FORTHIN  
8 ACRES  
(INCLUSION)

MIDPOINT  
SECTION 2



RECEIVED

AUG 23 1984

WATER RESOURCES DEPT  
SALEM, OREGON

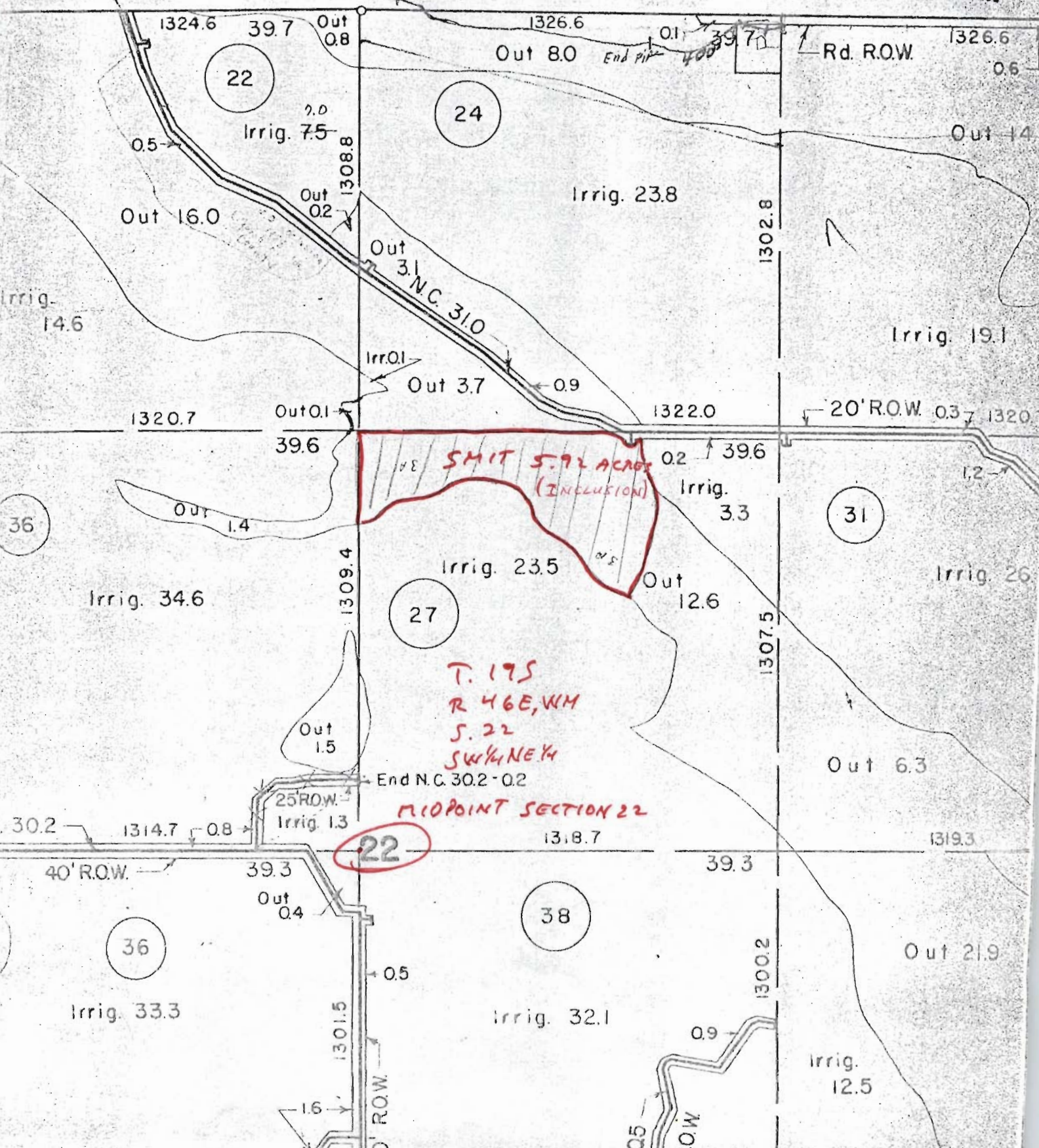


RECEIVED

AUG 23 1984

WATER RESOURCES DEPT  
SALEM, OREGON

93'  
50' N.W. 1/4



22

SMIT 5.92 ACRES  
(INCLUSION)

T. 175  
R. 46E, WM  
S. 22  
SW 1/4 NE 1/4

MIDPOINT SECTION 22