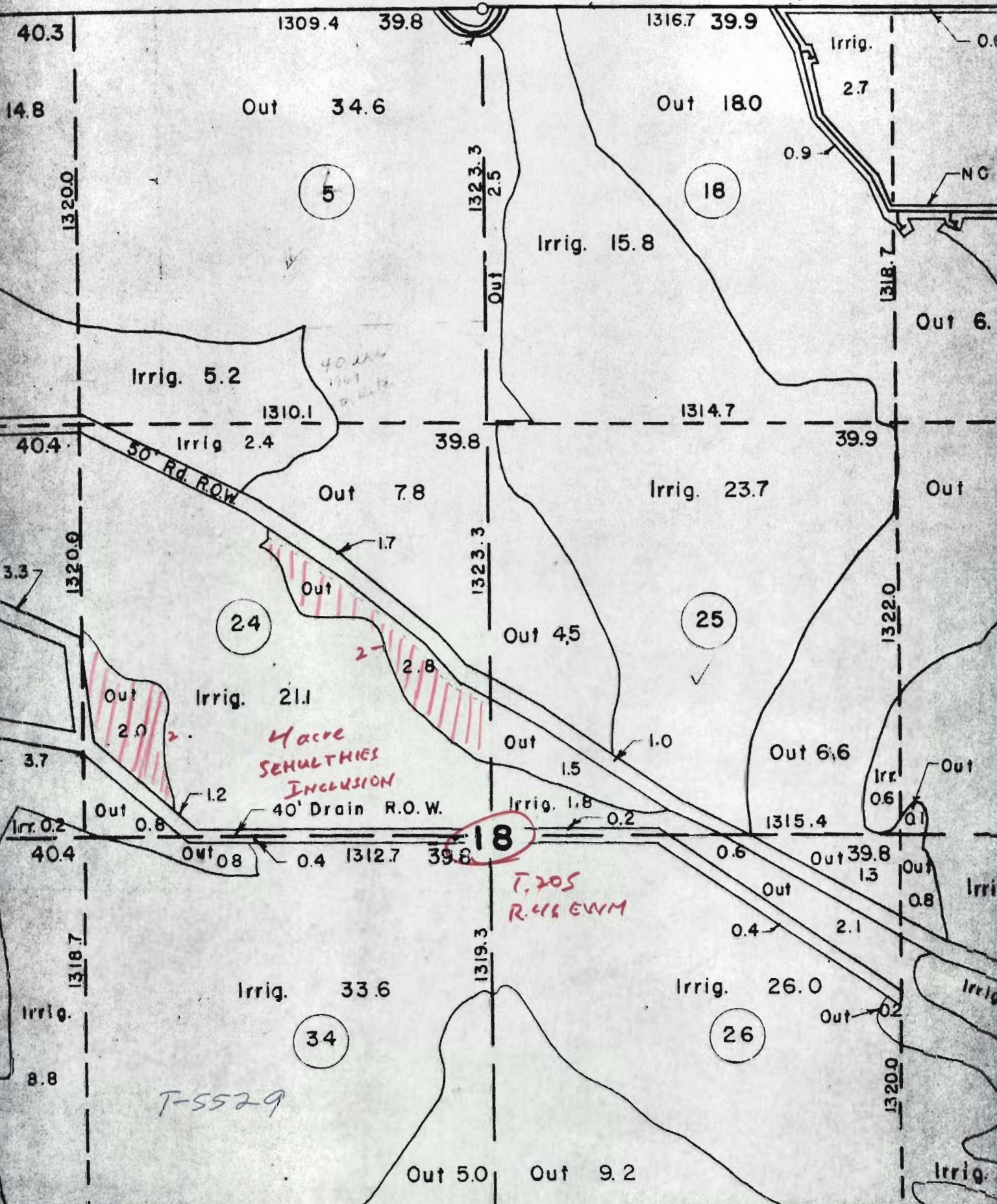


T-5529



40.3

1309.4 39.8

1316.7 39.9

Irrig.

2.7

14.8

Out 34.6

Out 18.0

0.9

0.0

1320.0

5

1323.3
Out 2.5

18

Irrig. 15.8

NC

Out 6.

Irrig. 5.2

1310.1

1314.7

Irrig 2.4

39.8

39.9

40.4

50' Rd. R.O.W.

Out 7.8

Irrig. 23.7

Out

3.3

1320.0

24

1323.3

25

Out 1.7

Out 4.5

1322.0

Out 2.0

Irrig. 21.1

Out 2.8

Out 1.5

1.0

Out 6.6

Out

Macro SEWALTHIES INCLUSION

40' Drain R.O.W.

Irrig. 1.8

18

1315.4

Irrig. 0.6

Out

3.7

Out 0.8

40.4

Out 0.8

0.4

1312.7

39.8

18

T. 205 R. 416 EWM

0.6

Out 39.8

1.5

Out 0.8

Irrig.

1318.7

Irrig. 33.6

1319.3

Irrig. 26.0

26

Out 0.2

Irrig.

Irrig.

8.8

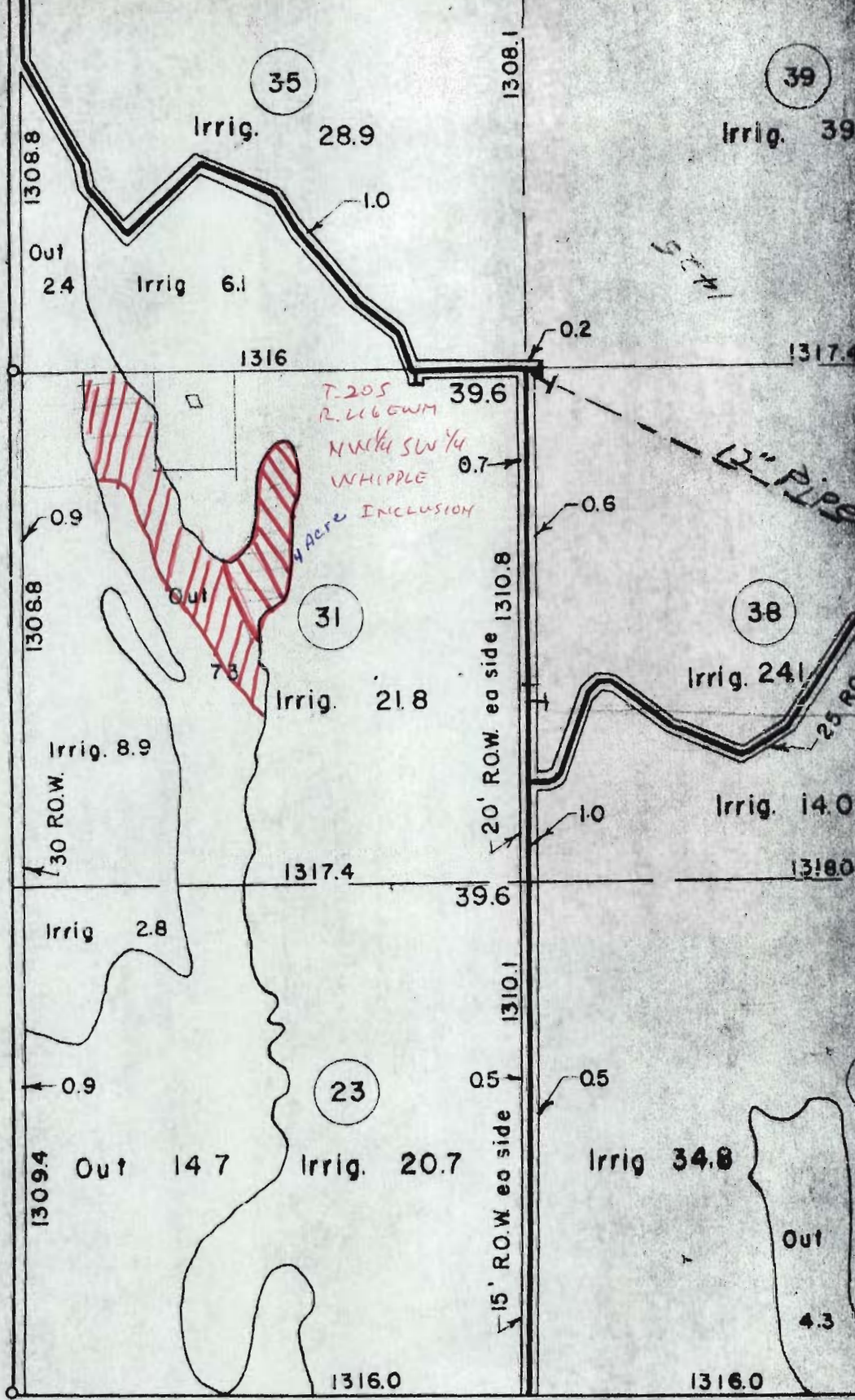
T-5529

Out 5.0

Out 9.2

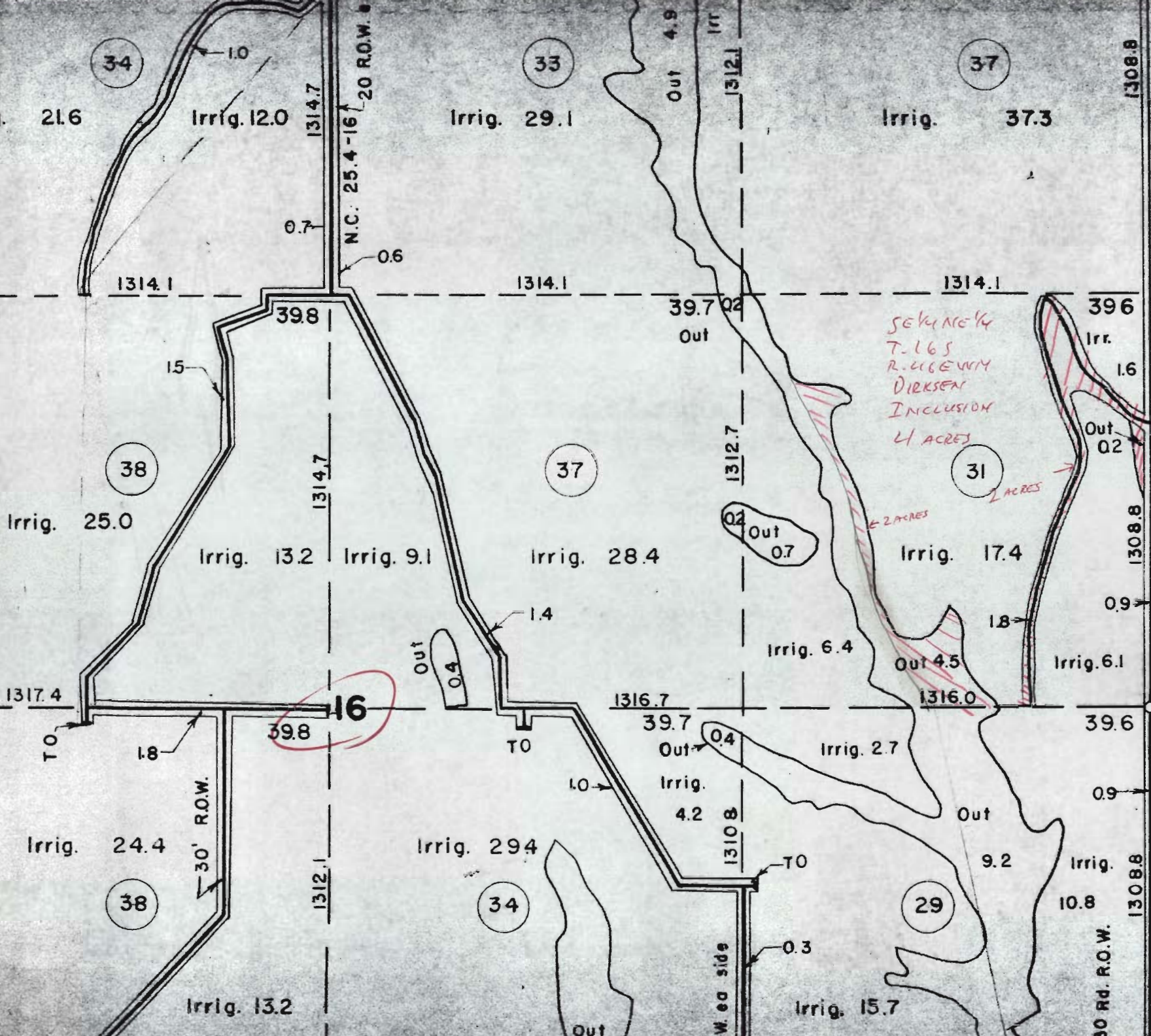
1320.0

Irrig.



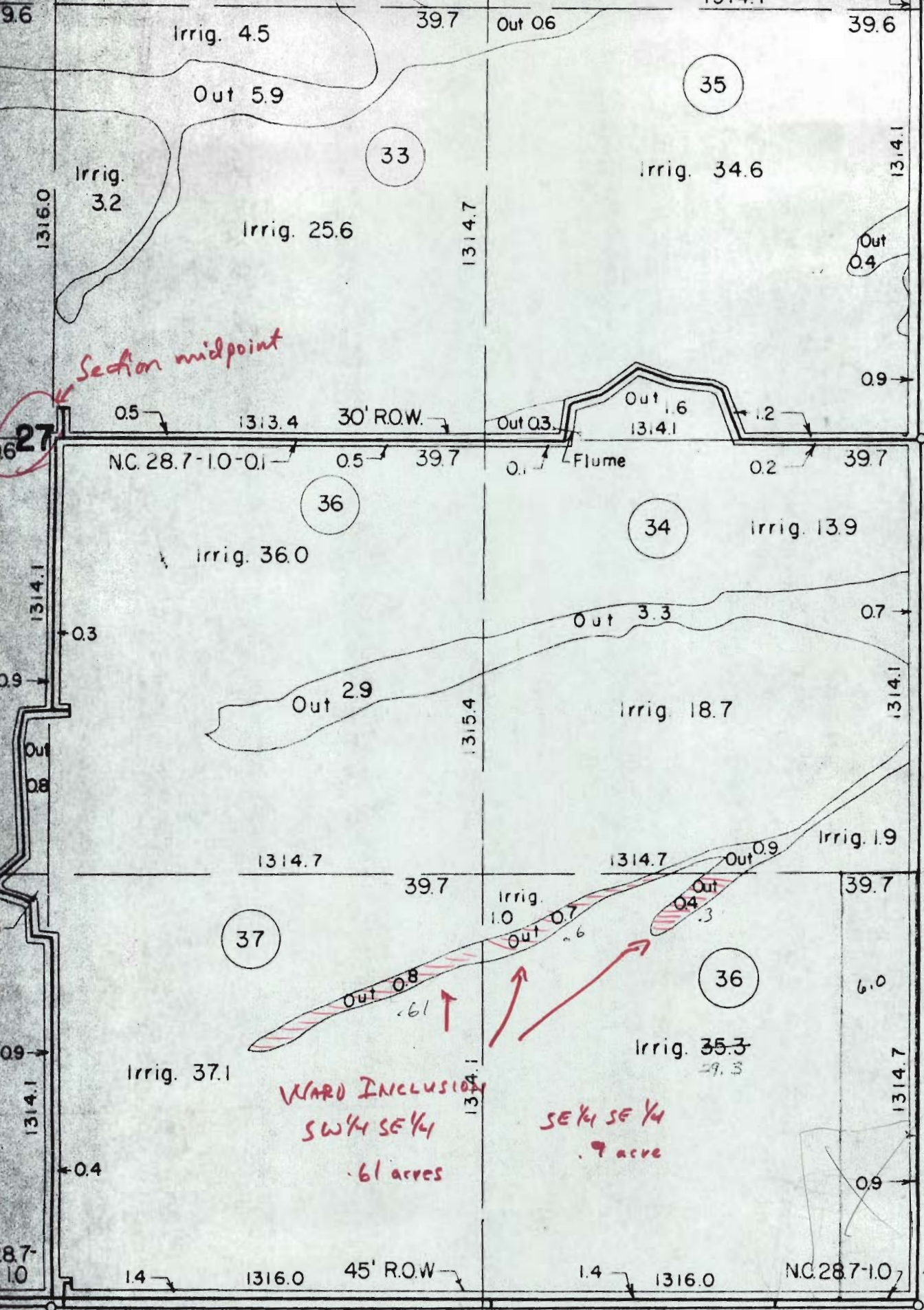
T-5529

Traced: J.H. 4/8/57
 Checked MY 5/10/57



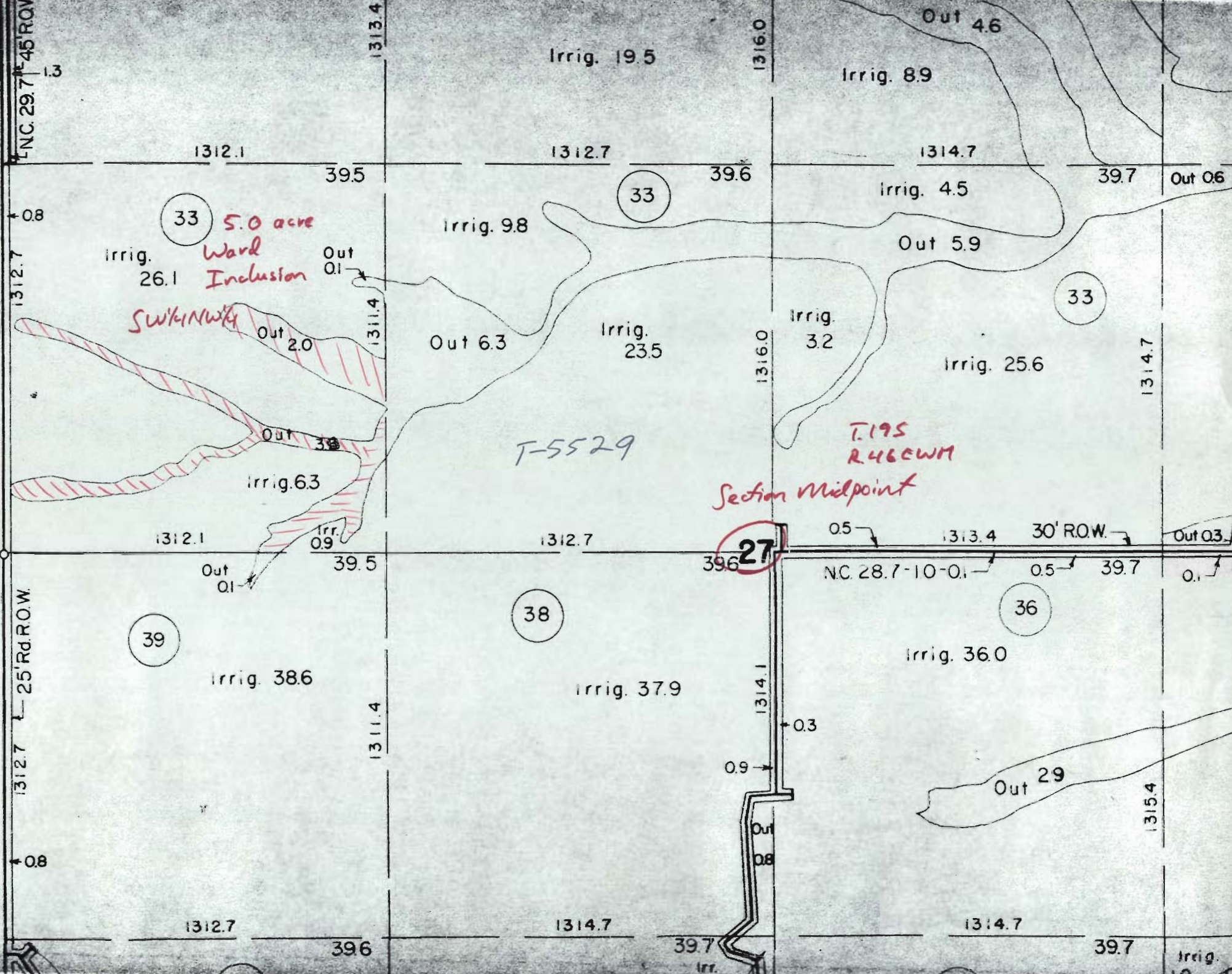
T-5529

RECEIVED
 SEP 13 1984
 WATER RESOURCES DEPT
 SALEM, OREGON



T-5529

SEC. 27-T. 19S.-R. 46E.-W. M.



ENC. 29.7 45' ROW
1.3

1312.7

1312.7

0.8

0.8

0.8

33 5.0 acre
Ward
Inclusion

Swk/Mwky

T-5529

Section Midpoint

NC. 28.7-10-0.1

30' ROW

39

38

27

36

1312.1

39.5

1312.7

39.6

1314.7

39.7

1312.1

39.5

1312.7

39.6

1313.4

39.7

1312.7

39.6

1314.7

39.7

1314.7

39.7

1313.4

1311.4

1311.4

1316.0

1316.0

1314.1

1314.7

1315.4

Irrig. 19.5

Irrig. 8.9

Out 4.6

Irrig. 4.5

Out 06

Irrig. 26.1

Irrig. 9.8

33

Out 5.9

33

Out 2.0

Out 6.3

Irrig. 23.5

Irrig. 3.2

Irrig. 25.6

Irrig. 6.3

Irr. 0.9

T-5529

T.195
R.46CWM

NC. 28.7-10-0.1

30' ROW

Out 01

39.5

1312.7

39.6

NC. 28.7-10-0.1

39.7

Out 03

Irrig. 38.6

Irrig. 37.9

Irrig. 36.0

0.9

0.3

Out 29

0.8

0.8

0.8

0.8

Irrig.