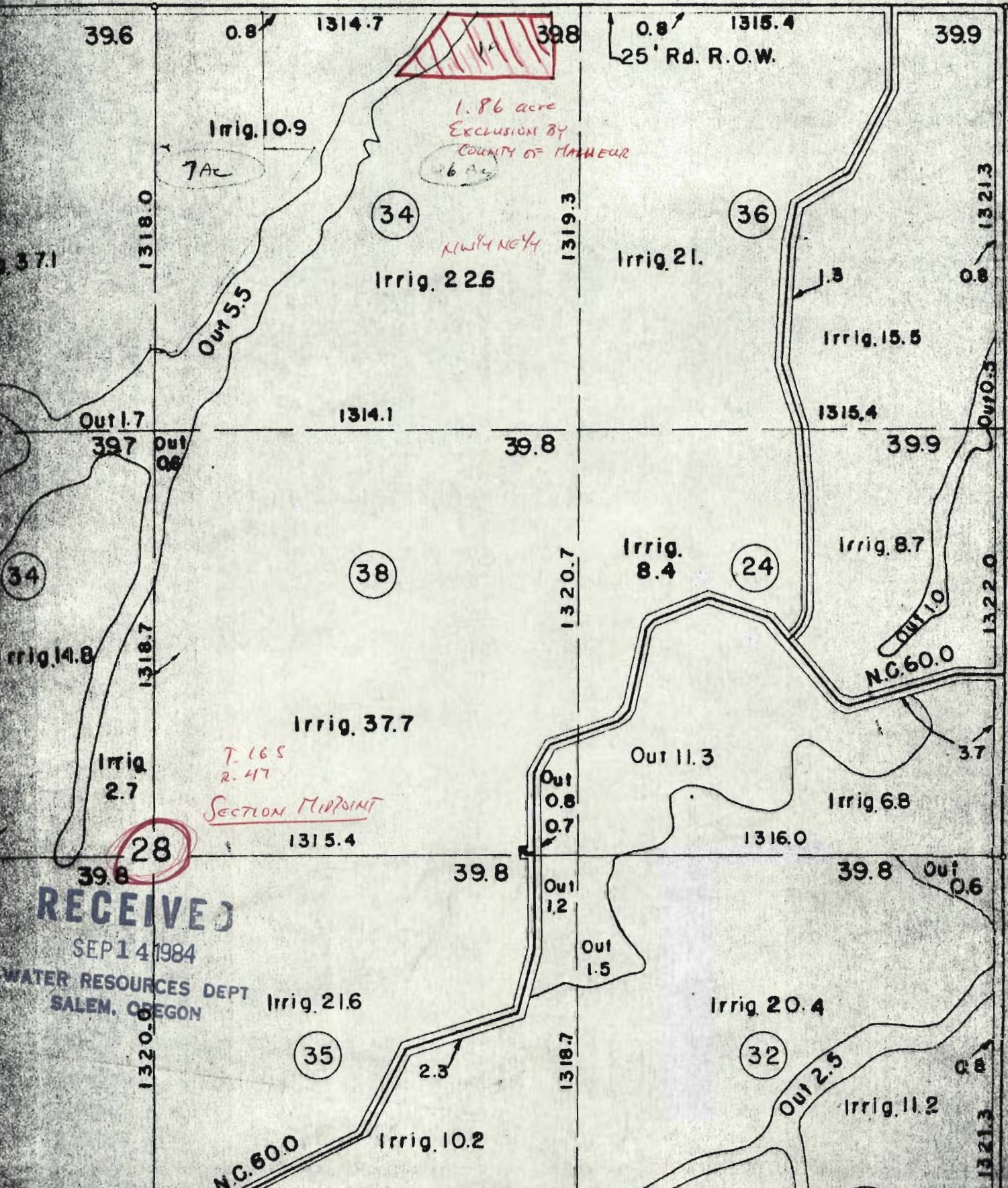


T-5530



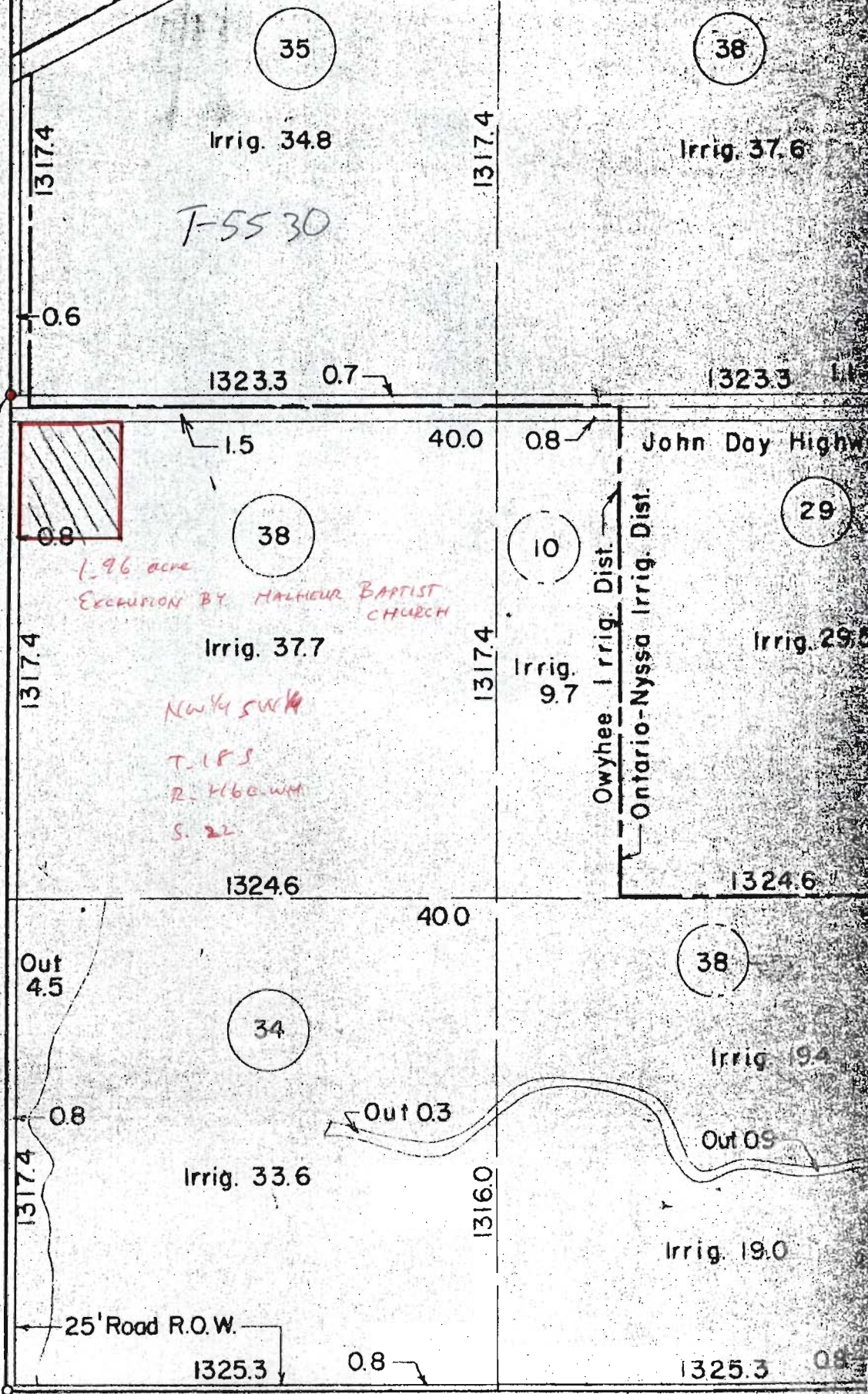
RECEIVED

SEP 14 1984

WATER RESOURCES DEPT
SALEM, OREGON

W.C. - N 0° 11' E
31.7'

W 1/4 COR



T-5530

1.96 acre

EXEMPTION BY MALHEUR BAPTIST CHURCH

NW 1/4 SW 1/4

T. 18 S

R. 166 W

S. 22

RECEIVED

SEP 14 1984

WATER RESOURCES DEPT
SALEM, OREGON

Traced: R. N. 9/13/56

Checked: JH. 5/8/57

RECEIVED

SEP 14 1984

WATER RESOURCES DEPT
SALEM, OREGON

F5530

Interstate
Highway

50' Rd.
ROW.

29

T17S, R17E, WM

Robert
Batcheller
L.P.A.

36

W. Creek
10.0A

D. Mullen

E. Dammerer

1.4 acres
FIELDS
5 acre
EXCLUSION
3.6 acre

Clark, Chet

50' Rd. ROW.

50' Rd. ROW.

50' Road R.O.W.

Irrig. 13.5

1319.5

1319.5

1324.3 Out 1.3

39.7

39.7

Irrig. 35.7

Out 39.7

Out

1311.4

1309.4

Out 3.2

Out 10.2

1316.0

1324.0

39.7

10.24.2

Out 39.7

Out

Out 10.8

1310.6

1313.4

Clark, Chet

4.3
Fields

Out 2.6

1314.7

1316.0

39.7

0.8

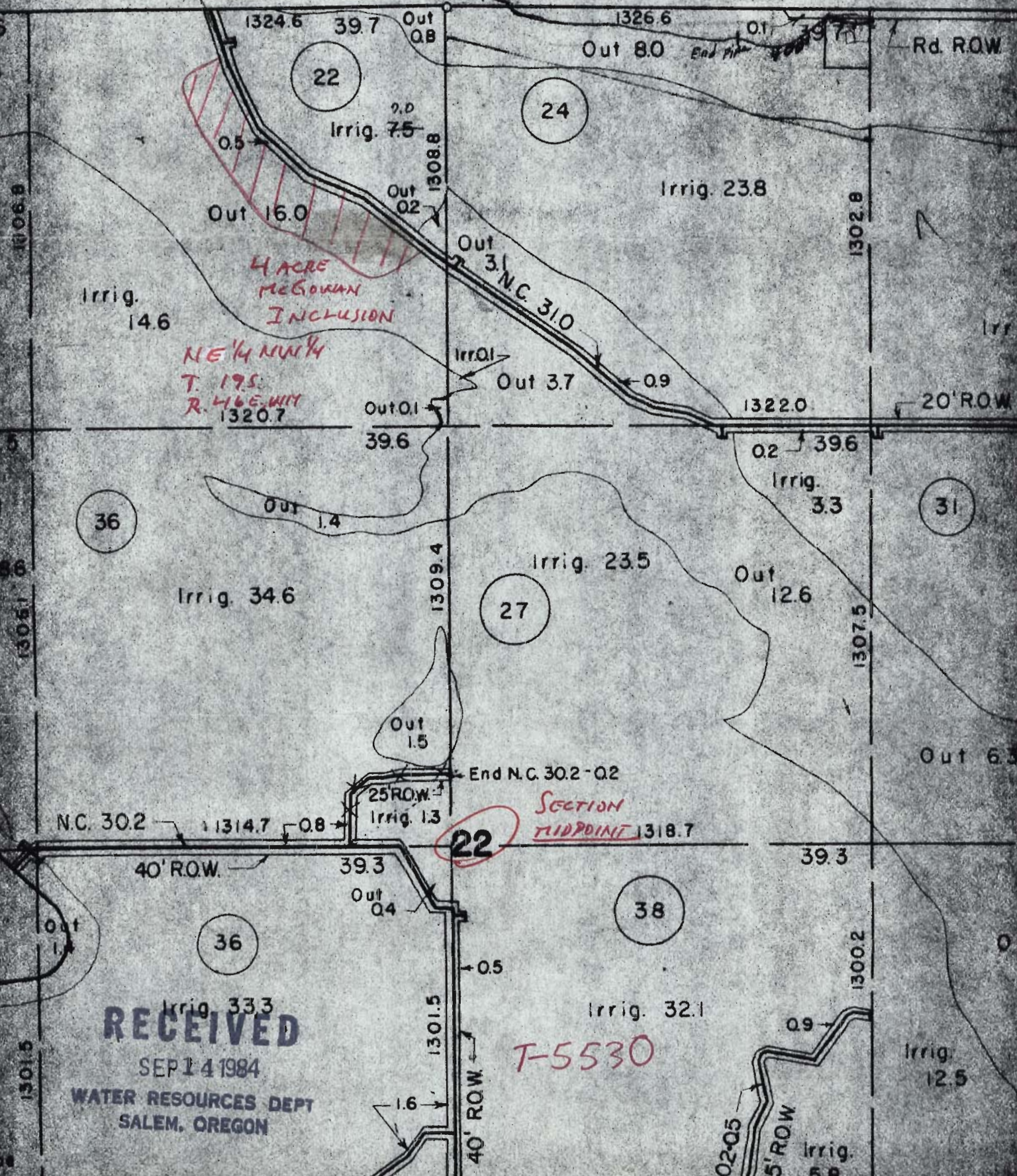
0.11.5

RECEIVED

SEP 8 4 1984

WATER RESOURCES DEPT 5530
SALEM, OREGON

93'
50' made



RECEIVED

SEP 14 1984

WATER RESOURCES DEPT
SALEM, OREGON

T-5530

T-5530

1319.3

1320.7

399

1316.0

OUT

1314.7

CANAL

Out 22.9

Lower Toe

Culvert

Out 01

Out 01

1318.7

15-

1320.7

SECTION MIDPOINT

39.6

Out 05

Out 07

T. 19 S
R. 46 E. W.M.

NW 1/4 SE 1/4

Out 23.6

KESLER
INCLUSION
4.82 ac

NORTH

Irrig. 5.4

OUT

1302.2

Culvert

Out 6.9

1308.1

RECEIVED

SEP 14 1984

WATER RESOURCES DEPT
SALEM, OREGON

Dist. Bdry.

2

Irrig. 13.0

Irrig. 2.5

Out 5.5

1324.6

1325.3

1322.0

39.6

39.8

NC. 313' 20" RO

Owyhee Irrig.

Out 38.6

Out 6.2

32

Irrig. 31

1302.2

1309.4

OUT

16.8

NC. 310

8.8