

RECEIVED

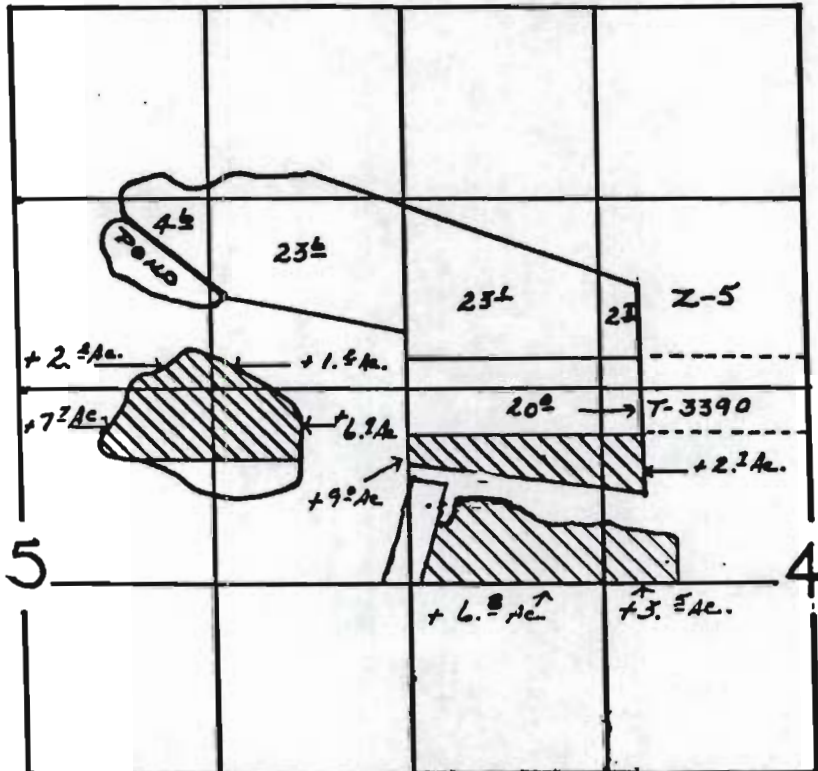
MAR 22 1985

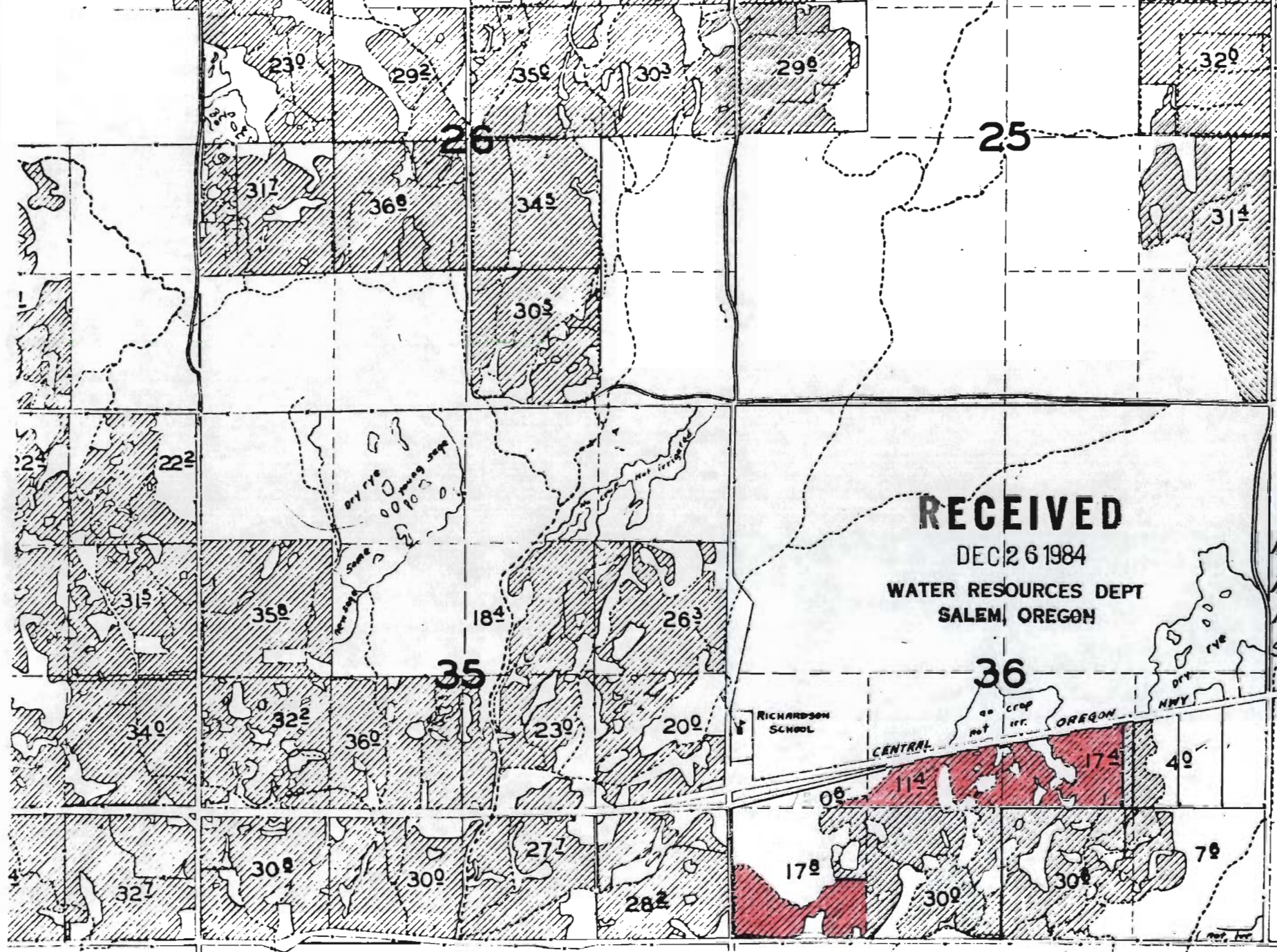
WATER RESOURCES DEPT
SALEM, OREGON

T15S. R.15E. W.M.

DWIN DUNKIN

SCALE 4" = APPROX. 1 MILE





RECEIVED

DEC 26 1984

WATER RESOURCES DEPT
SALEM, OREGON

NWSE-14°
NE SW-11°
NWSW-12°
SW/SW-14°
40°
OFF
I-5571

*all water signs
have been removed
10/10/84*