

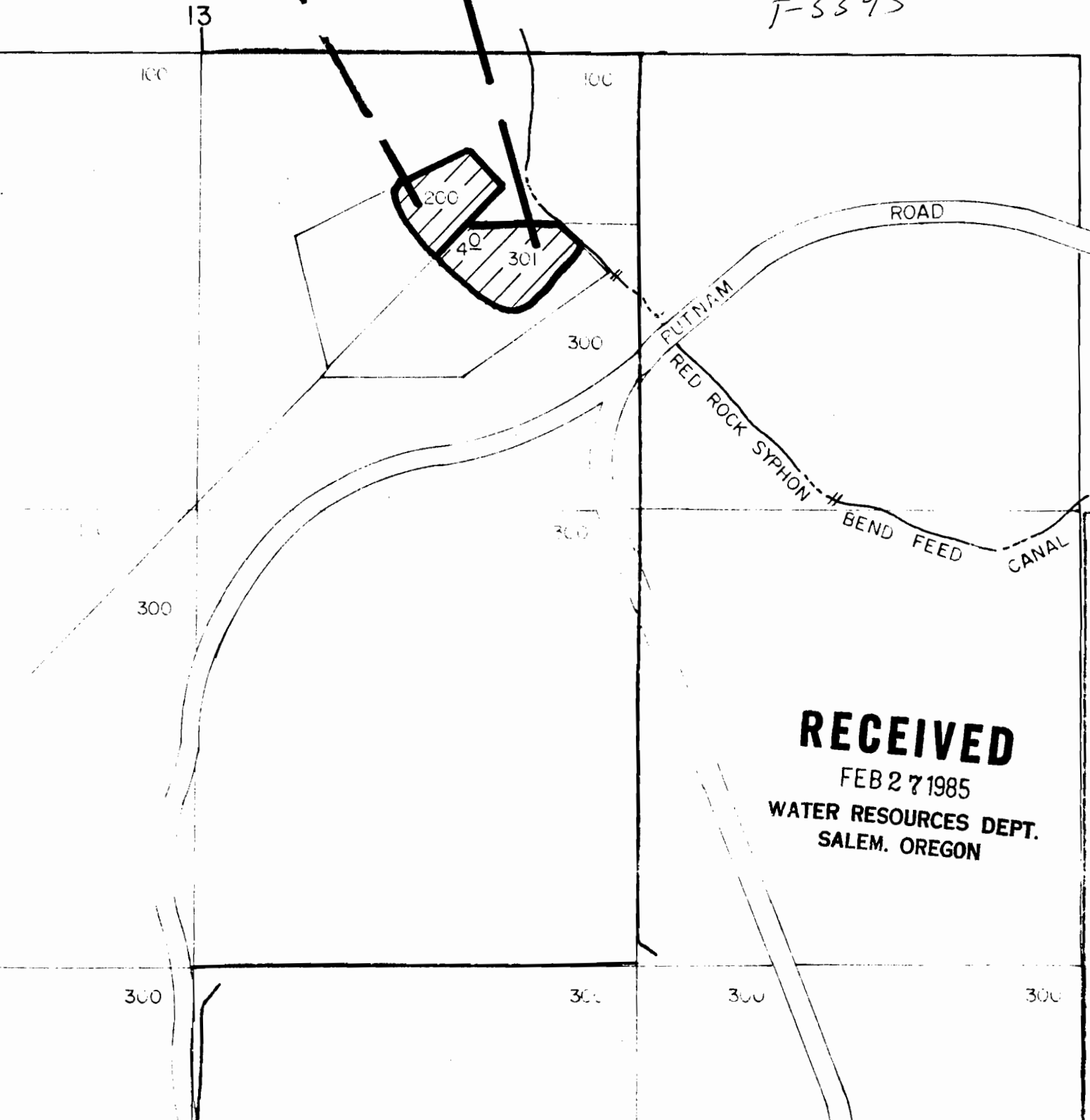
24 T. 17 S. R. 11 E. W. M.

1" = 400'

2.0 ON (c. 29052 - C.O.I.D.)

2.0 ON (c. 29052 - C.O.I.D.)

J-5595



**RECEIVED**

FEB 27 1985

WATER RESOURCES DEPT.  
SALEM, OREGON

RECEIVED

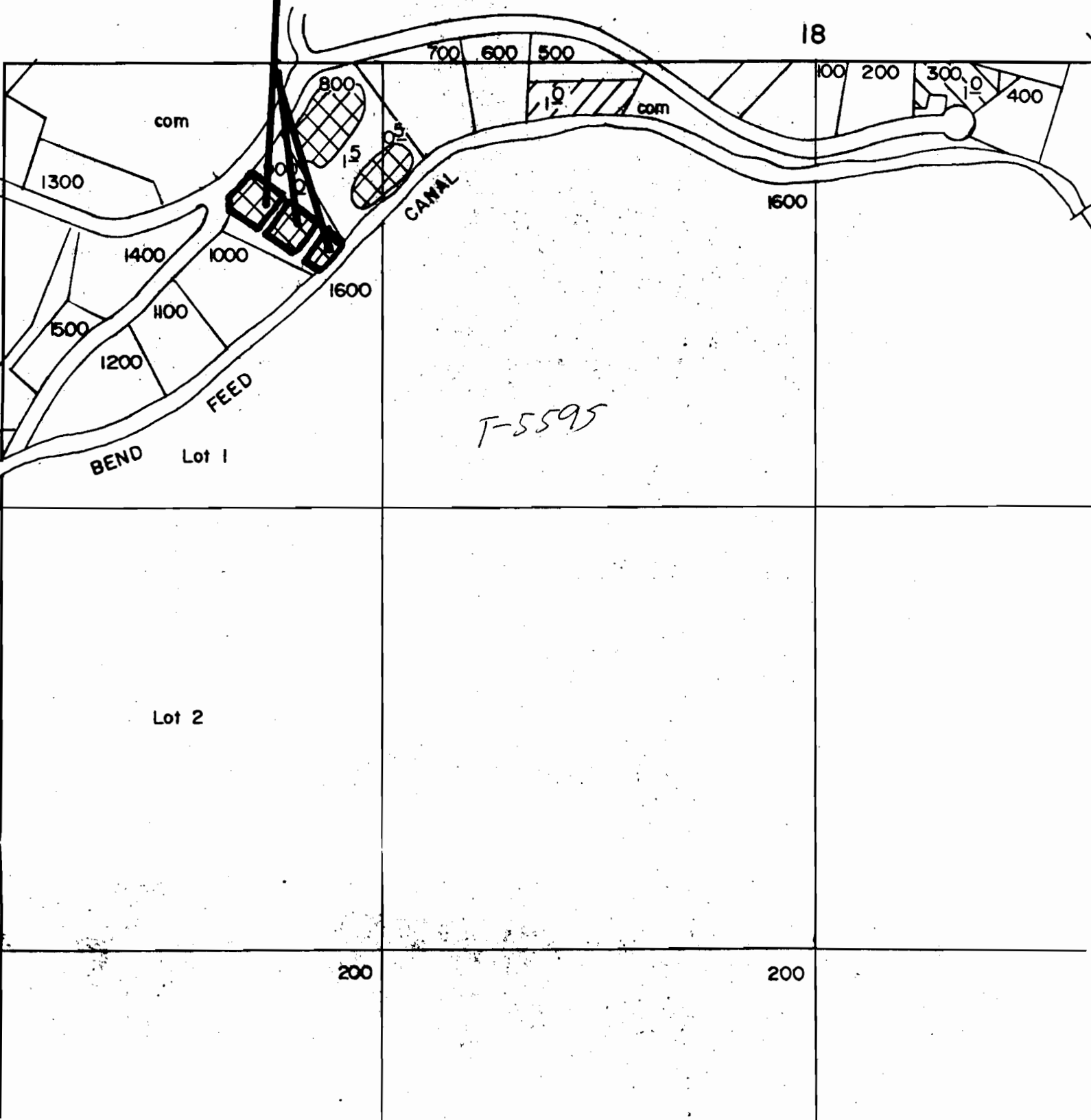
SECTION 19 T.17S.R.12E.W.M

FEB 27 1985

WATER RESOURCES DEPT.  
SAL. M. OFF. OF

1" = 400'

1.0 ON (c.29052 - C.O.I.D.)



SECTION 19 T.17 S.R.12 E. W.M.

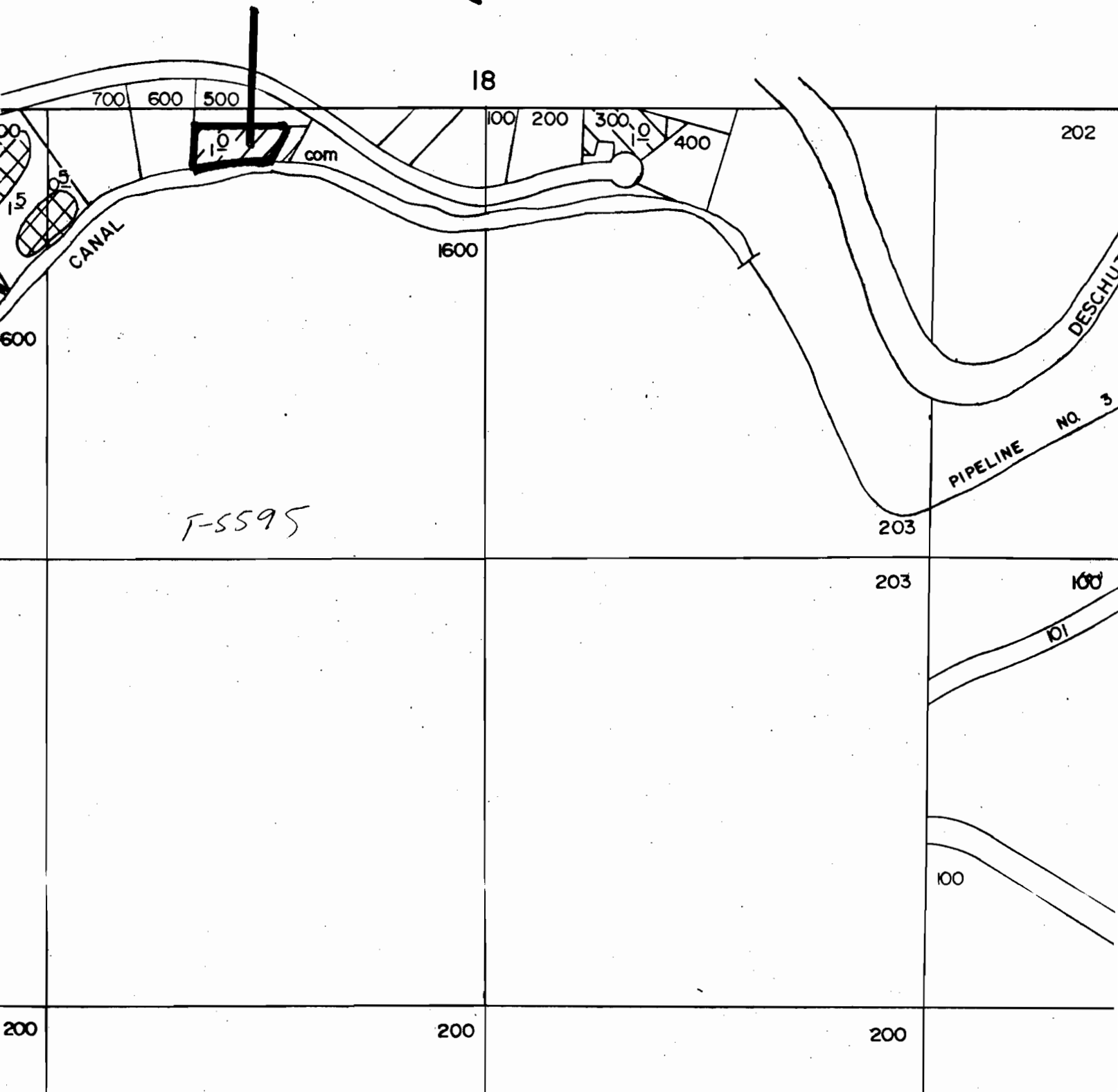
RECEIVED

FEB 27 1985

WATER RESOURCES DEPT  
SALEM, OREGON

1" = 400'

.86 ON (c. 29052 - c.o.i.d.)



SECTION 19 T.17 S.R.12 E. W.M

**RECEIVED**

FEB 27 1985  
WATER RESOURCES DEPT.  
SALEM, OREGON

2.0 ON (C. 29052 - C.O.I.D)  $1'' = 400'$

