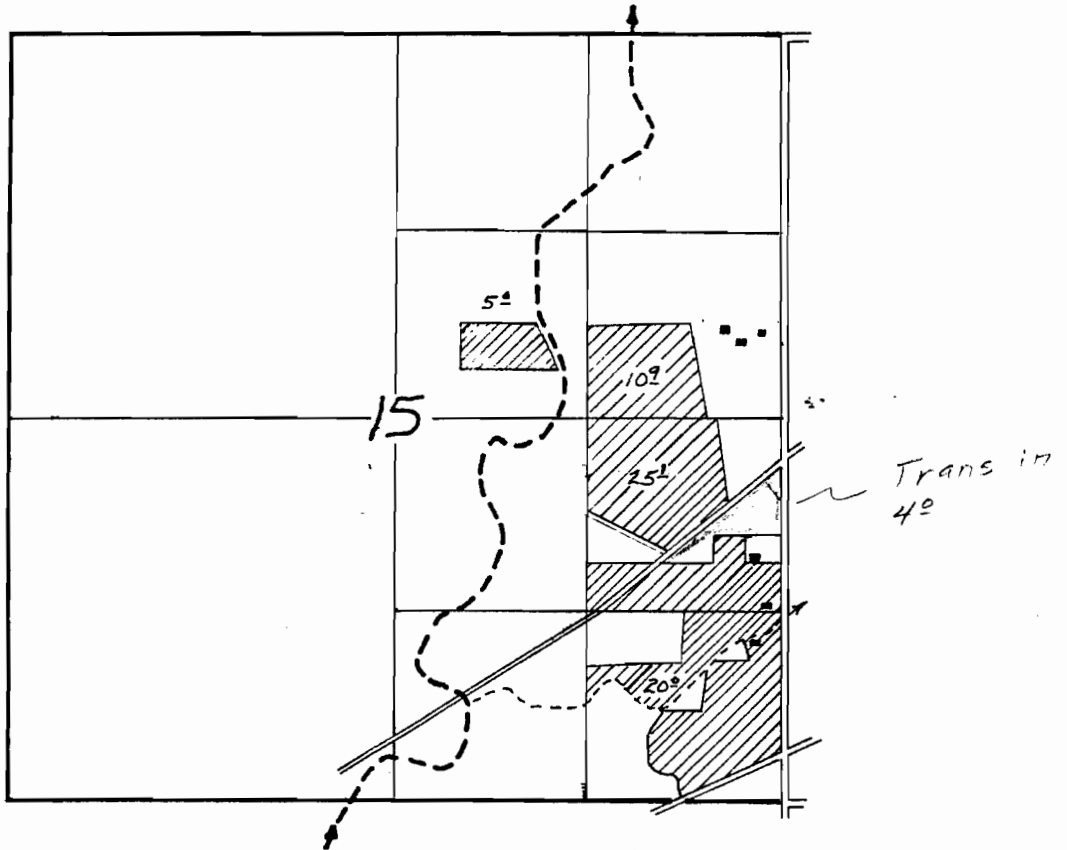


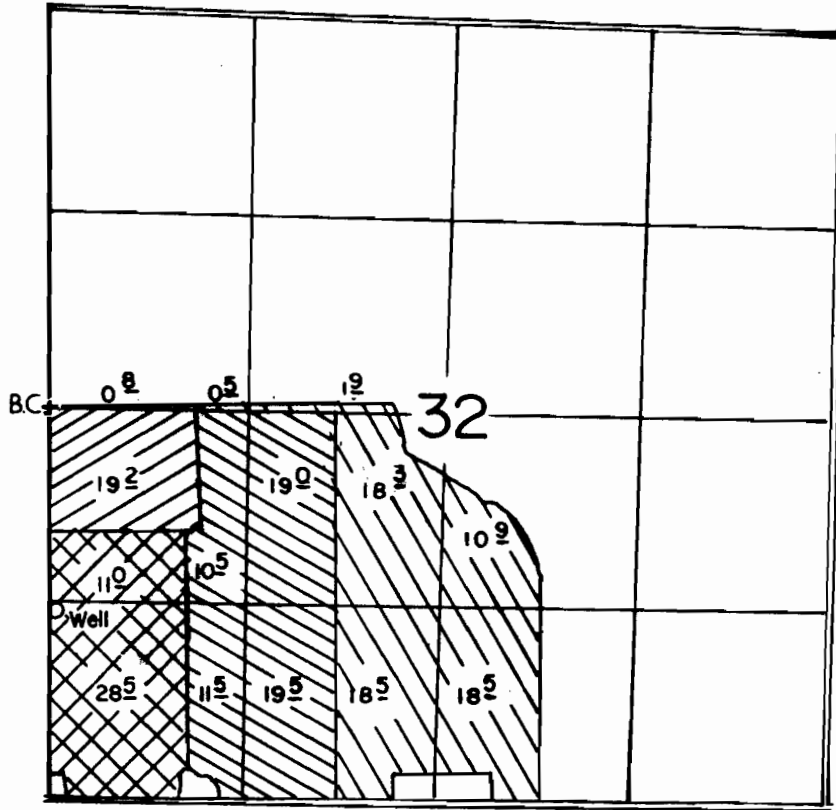
**RECEIVED**  
MAR 14 1985  
WATER RESOURCES DEPT.  
SALEM, OREGON

T-5609

T. 39 S., R. 19 E. W.M.







T. 39 S., R. 19 E., W. M.



Well Loc 1375' S. & 20' E. From W 1/4 Cor. Section 32

SCALE: 1" = 1320'

-  Permit G-9327 Primary
-  Permit G-9327 Supplemental
-  Permit G-10627
-  Transfer 5609 & Supplemental Under G-9327

## FINAL PROOF SURVEY

UNDER

TRANSFER NO. 5609

G-11536

G-10627

Application No. G-10302... Permit No. G-9327.....

IN NAME OF

**WALTER ALBERTSON**

Surveyed OCT. 17, 1987, by T. M. WARREN

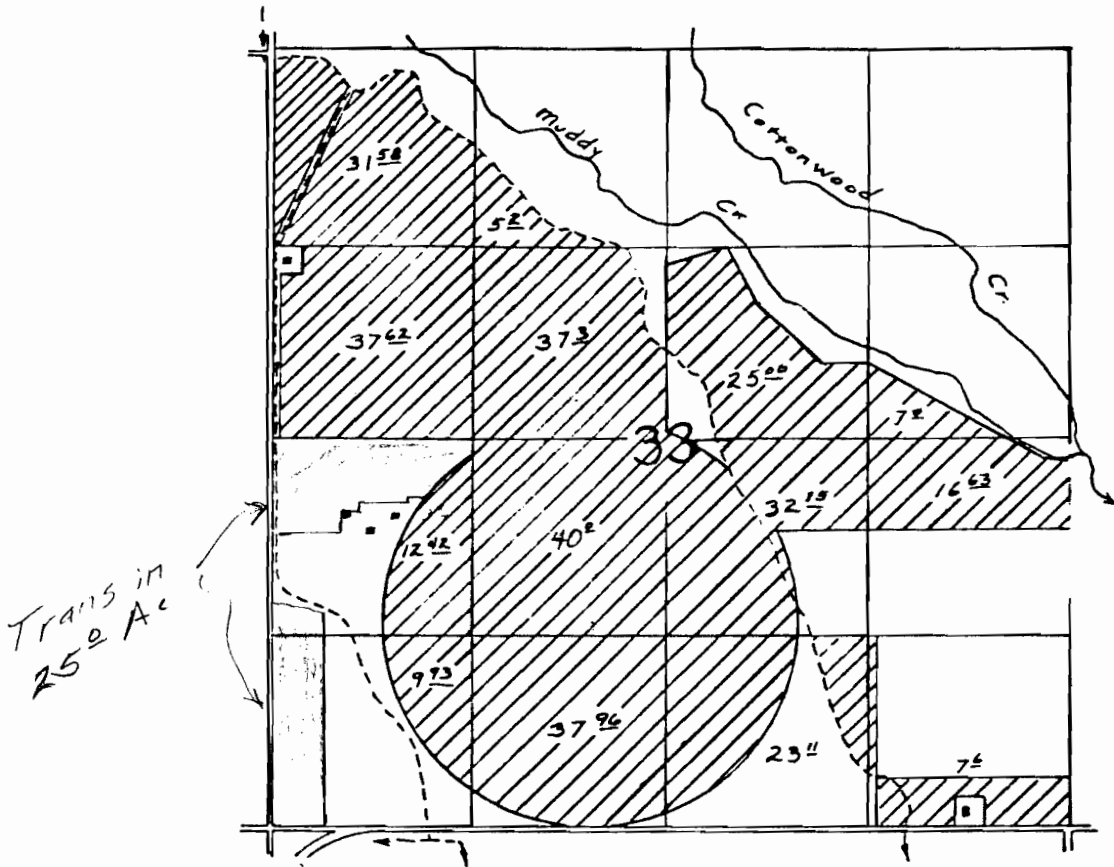
RECEIVED

MAR 14 1985

WATER RESOURCES DEPT  
SALEM, OREGON

T-5609

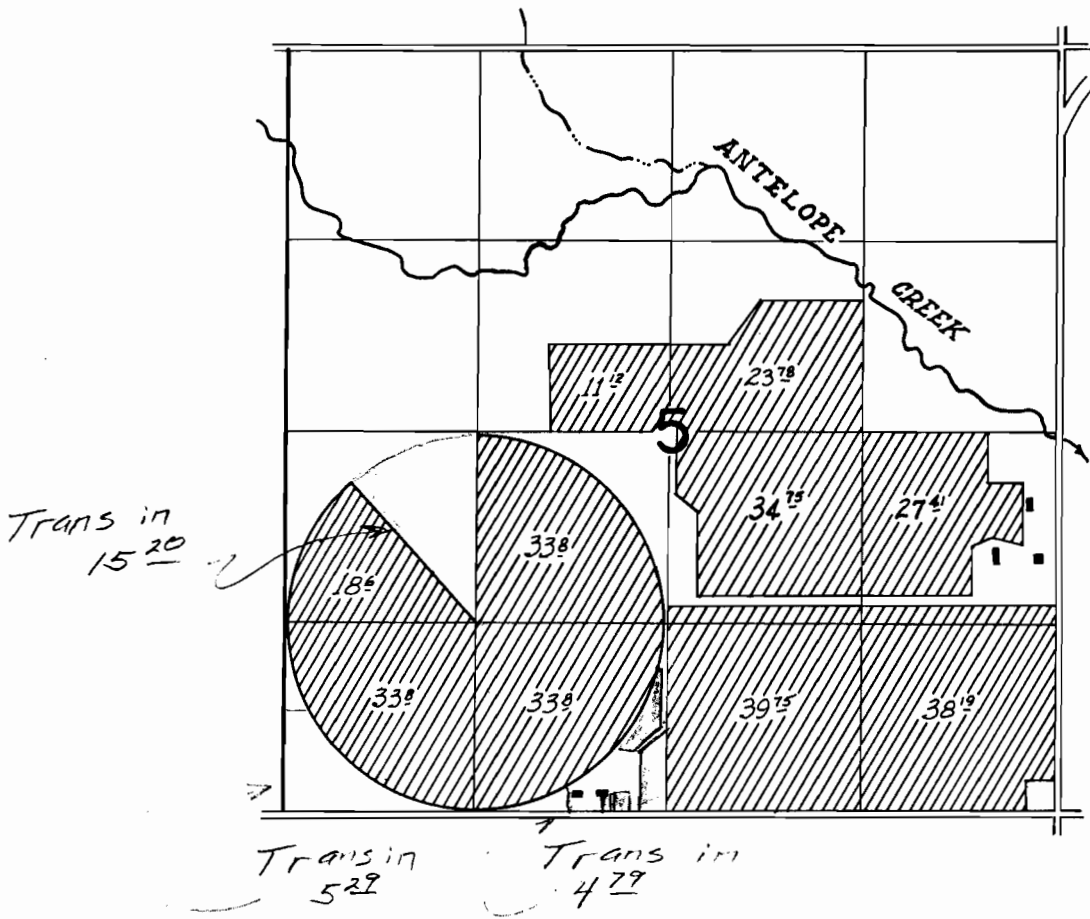
T 39 S, R 19 E, W.M.



MAR 14 1985  
WATER RESOURCES DEPT  
SALEM, OREGON

T-5609

T 40 S, R 19 E, W.M.



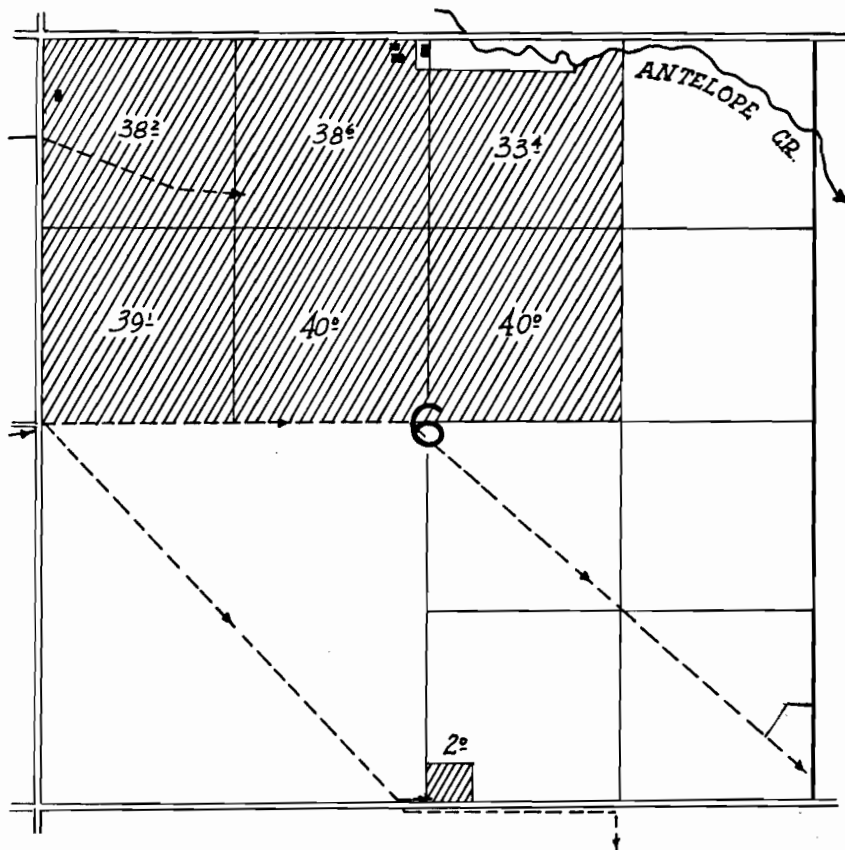
RECEIVED

MAR 14 1985

WATER RESOURCES DEPT  
SALEM, OREGON

T-5609

T 40 S, R 19 E, W.M.



Trans in  
398 AC

RECEIVED

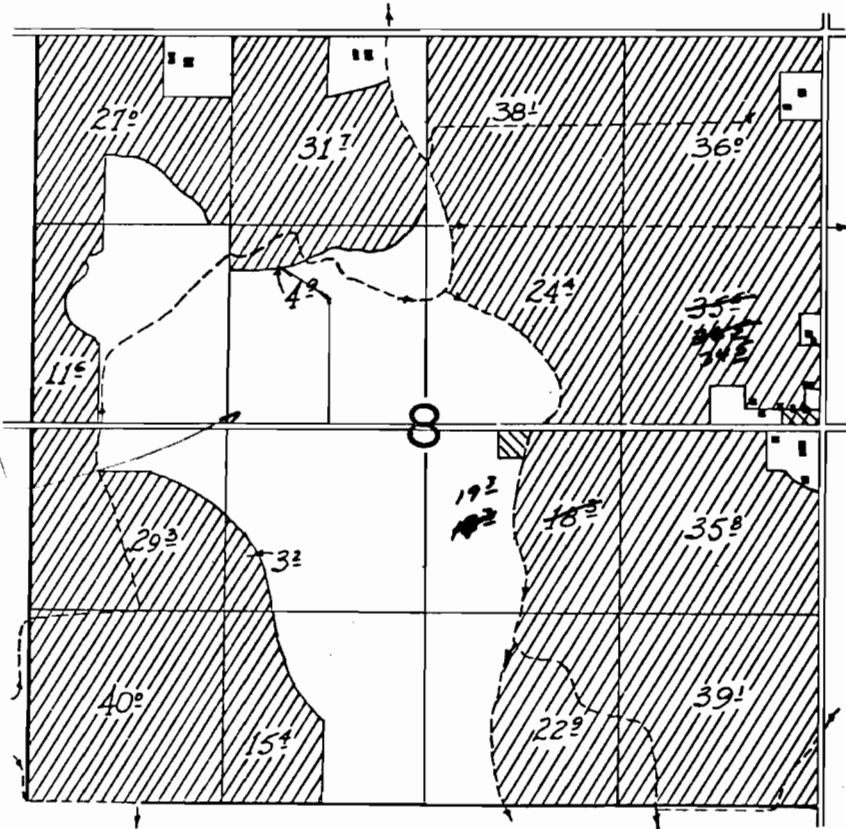
MAR 14 1985

WATER RESOURCES DEPT  
SALEM, OREGON

T-5609

T 40 S, R 19 E, W.M.

Trans  
in 14<sup>74</sup> Ac



XXXX Transfer from SE 1/4 NE 1/4 to NW 1/4 SE 1/4

//// Transfer to NW 1/4 SE 1/4 from SE 1/4 NE 1/4