

T-5643

16-11-15  
1" = 400'

RECEIVED

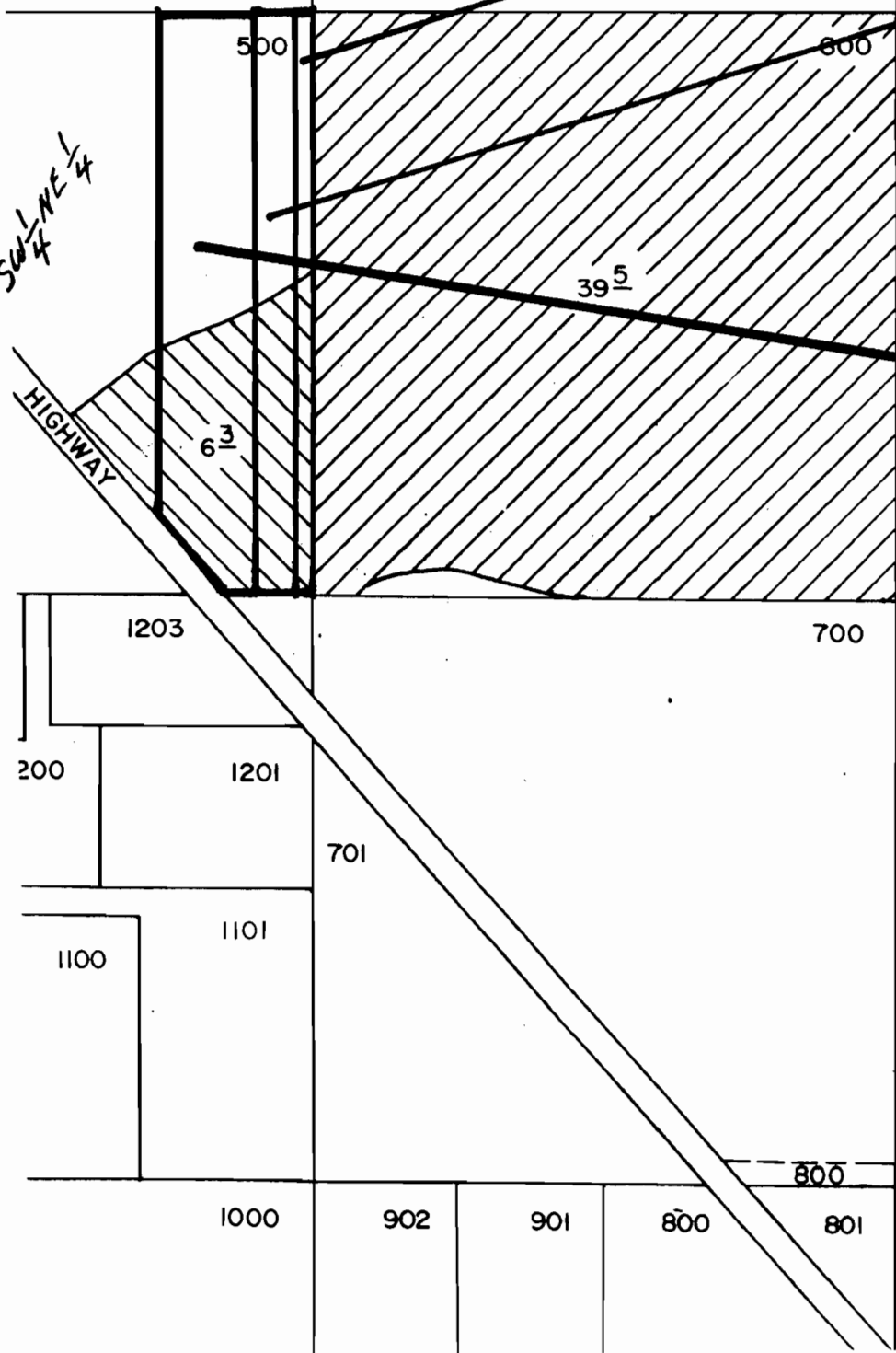
MAY 24 1985

WATER RESOURCES DEPT  
SALEM, OREGON

1.2 ON  
(C. 26508, 9/1900)

2.8 ON  
(C. 31410, 9/1900)

6.3 RELOCATED  
(C. 26050, 10/1913)



T-5643

T-5643

16-11-14  
1" = 400'

RECEIVED

MAY 24 1985

WATER RESOURCES DEPT  
SALEM, OREGON

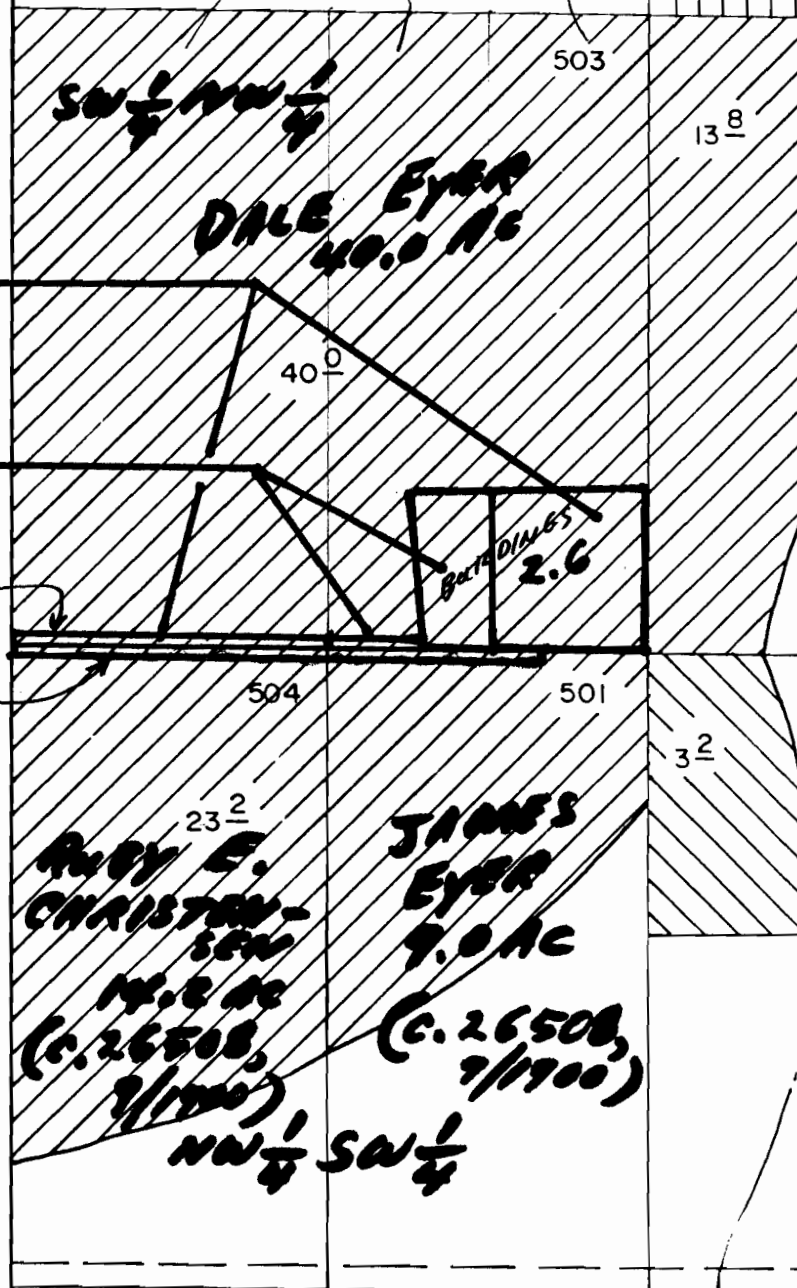
30AC (C. 31410, 9/1900)

10AC (C. 26508, 9/1900)

2.6 OFF  
(C. 31410, 9/1900)

1.2 OFF  
(C. 26508, 9/1900)

ROAD  
15  
ROAD



23 2  
RUBY E.  
CHRISTENSEN  
14.2 AC  
(C. 26508, 9/1900)  
NW 1/4 SW 1/4

JAMES  
EYER  
9.0 AC  
(C. 26508, 9/1900)

DALE EYER  
40.0 AC

BUTADINES  
2.6

40 0

503

13 8

504

501

3 2

800

BEND-SISTERS

9 4

900

T-5643