

NW1/4 SEC. 33 T.16S. R.12E.W.M.

DESCHUTES COUNTY

1"=200'

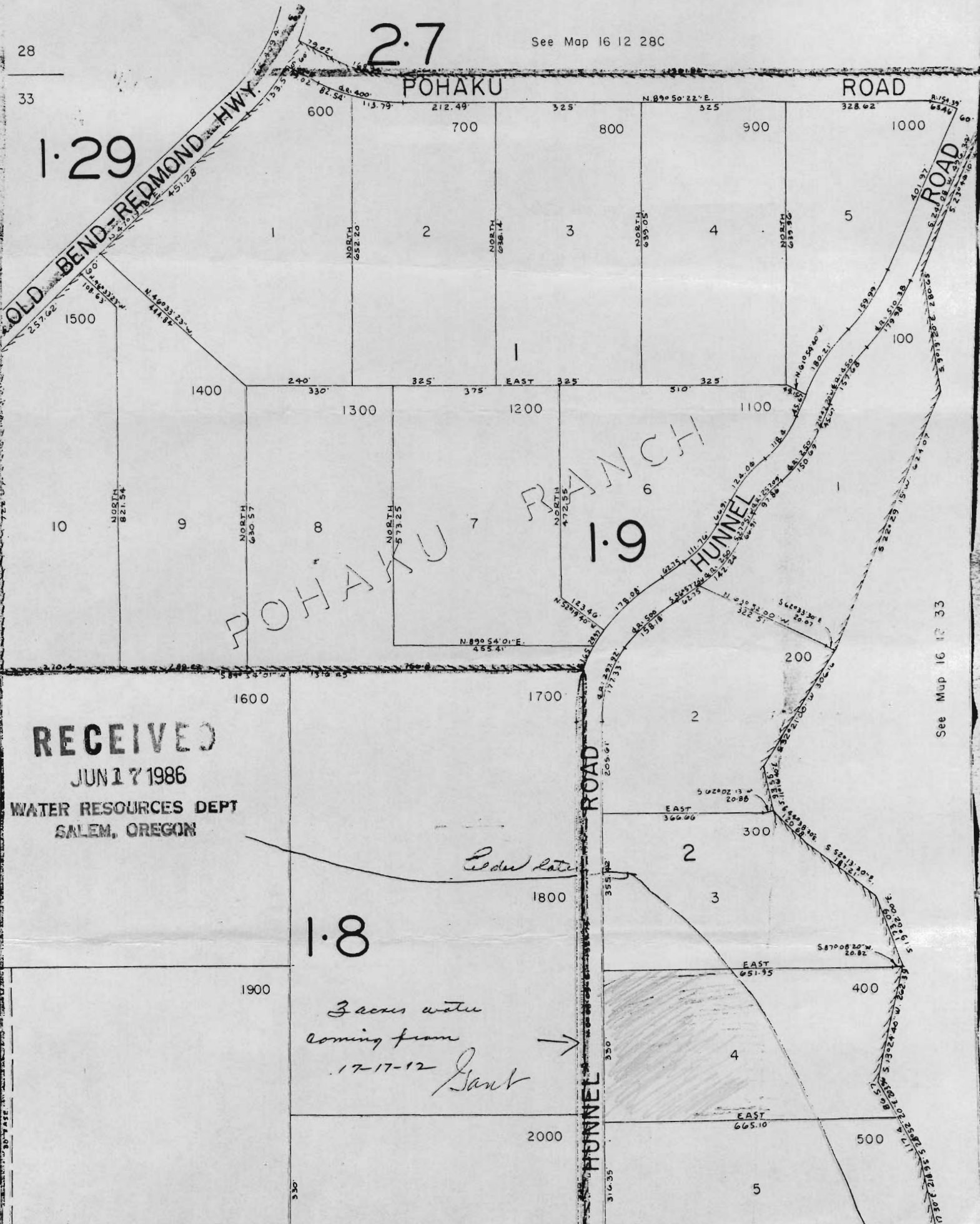
See Map 16 12 28C

28

33

1-29

2-7



POHAKU RANCH

1-9

RECEIVED

JUN 17 1986

WATER RESOURCES DEPT
SALEM, OREGON

Redded later

1-8

*3 acres water
coming from
17-17-12 Bank*



See Map 16 12 33

T175 R12 E sec 17

#1

RECEIVED

See Map 17 12 17A

JUL 21 1986

WATER RESOURCES
SALEM, OREGON

SCALE 1:4800



T-5655

See Map 17 12 17C

See Map 17 12 16C

