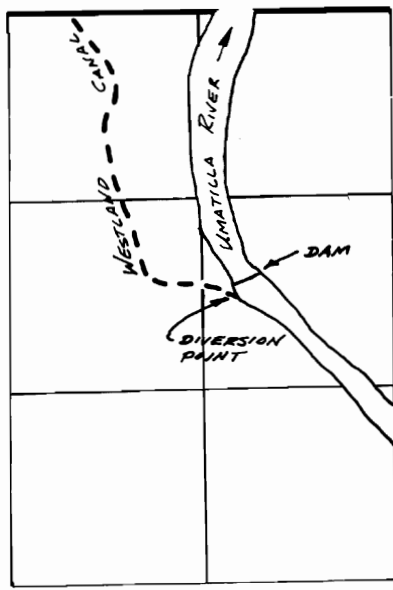
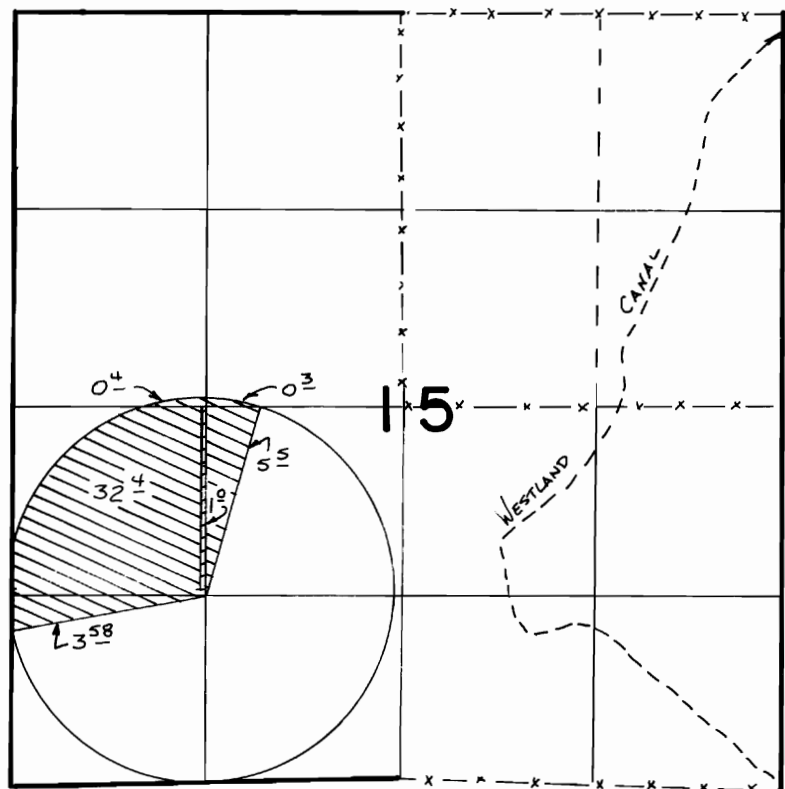


T. 3N., R. 28E., W.M.

T. 3N., R. 29E., W.M.



DIVERSION POINT LOCATED N. 76° 45' 56" E.  
2913.19' FROM W. 1/4 COR. SEC. 21



1961



1907

**FINAL PROOF SURVEY**  
UNDER

**TRANSFER 5698**  
IN NAME OF

.....**CHESTER**.....**PRIOR**.....

Surveyed ~~E.C.~~..... 1986., by V.L. Church.....