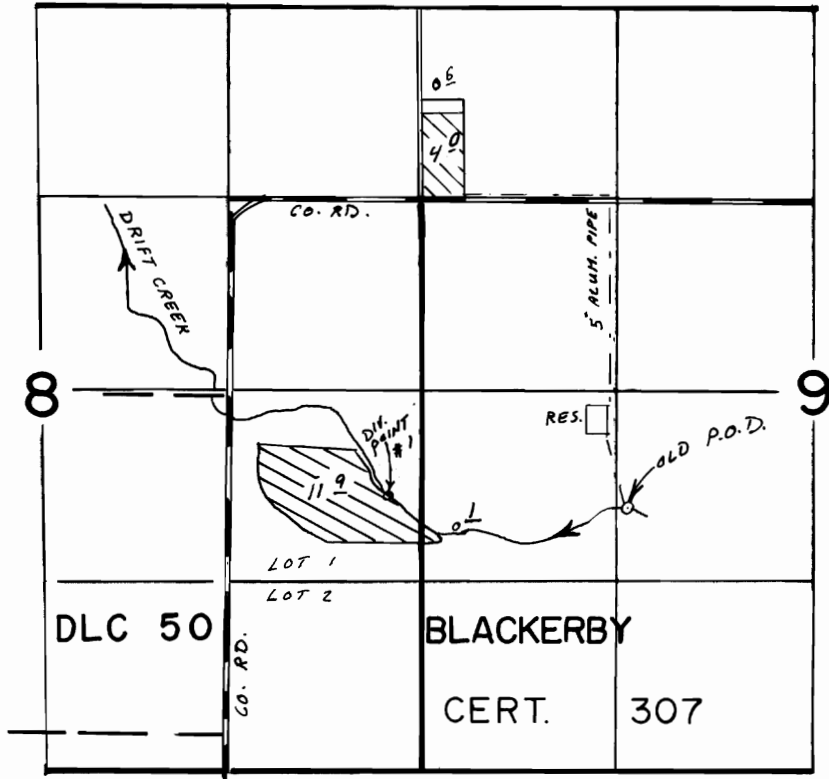


T. 7 S., R. 1 W., W. M.



DIV. POINT: 1900' N AND 230' W FROM SE CORNER SEC. 8
 Old P.O.D.: 1800' N and 1400' E from SE CORNER Sec. 8

SCALE 1" = 1320'

FINAL PROOF SURVEY UNDER

Transfer No. 5746

IN NAME OF

ALFRED VON FLUE

Surveyed JUN.....9.. 1988., by .Z.....SALEH.....

41047-278-132 D
 1-6-89 Z.F.S.
 REVISED 3/6/89 BWS