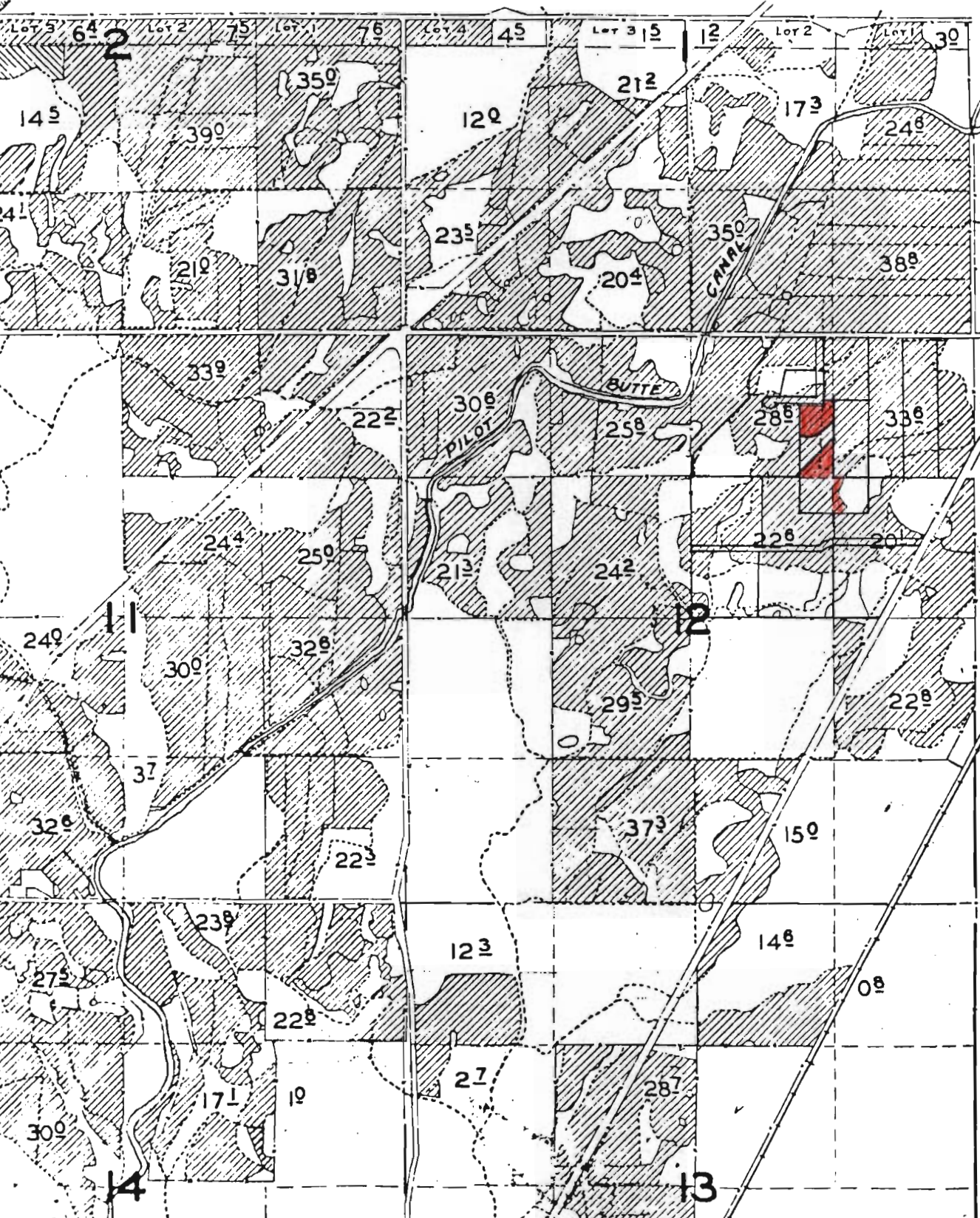


off T-5748

RECEIVED
JAN 21 1986
WATER RESOURCES DEPT
SALT LAKE COUNTY



474-REC-117
XIV 4 NE 1/4
E. HALLS CREEK
SECTION 11
TAX LOT 112
FROM
Bill Weaver

Sec. 12 T.16S. R.12E.W.M.
DESCHUTES COUNTY

1"=400'

dead numbers 114

T-5748

off

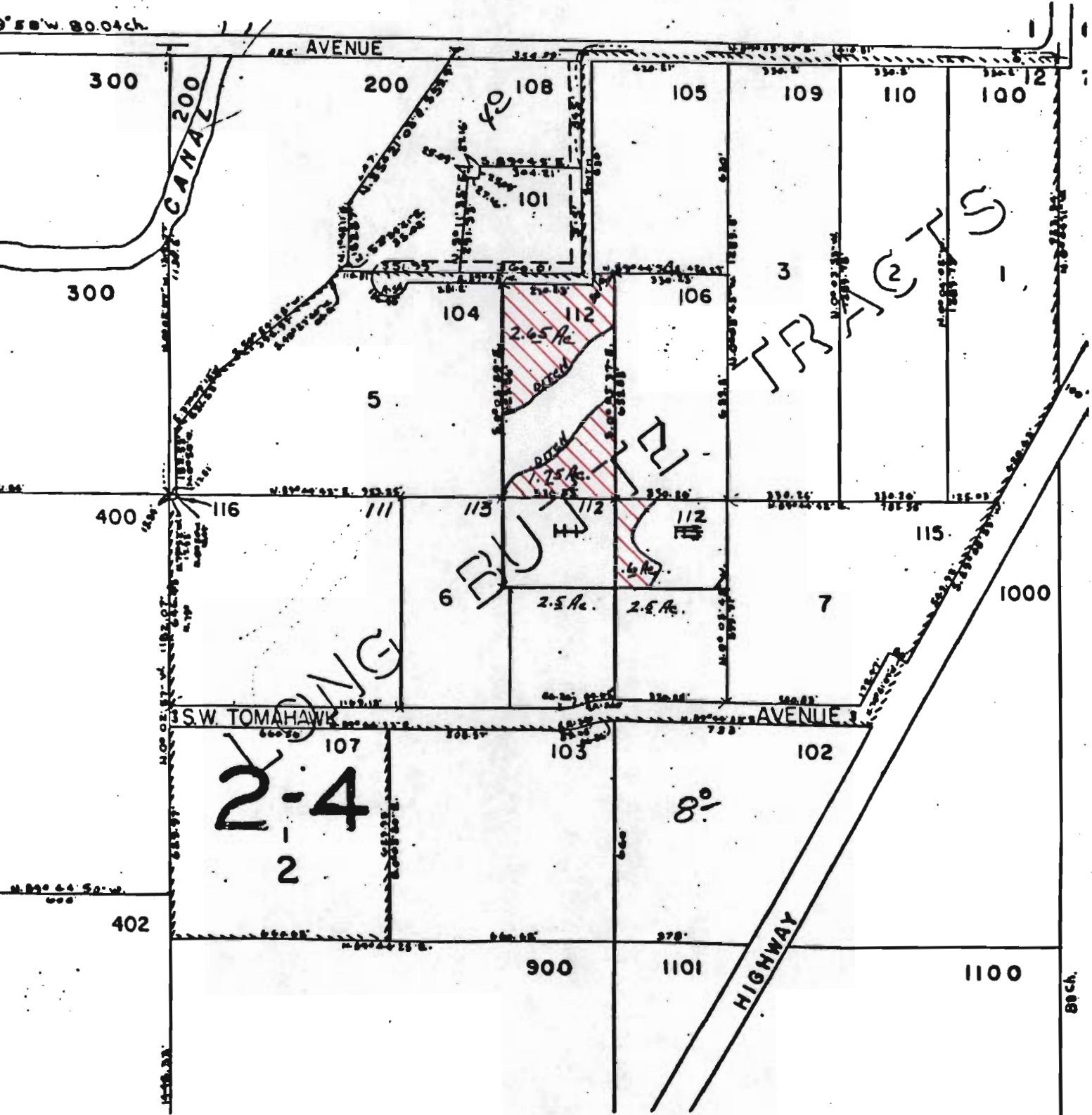
RECEIVED

JAN 21 1986

WATER RESOURCES DEPT.
SALEM, OREGON

Map 16 12

300 S.W. 80.04ch.



2-4
-1-
2

HIGHWAY

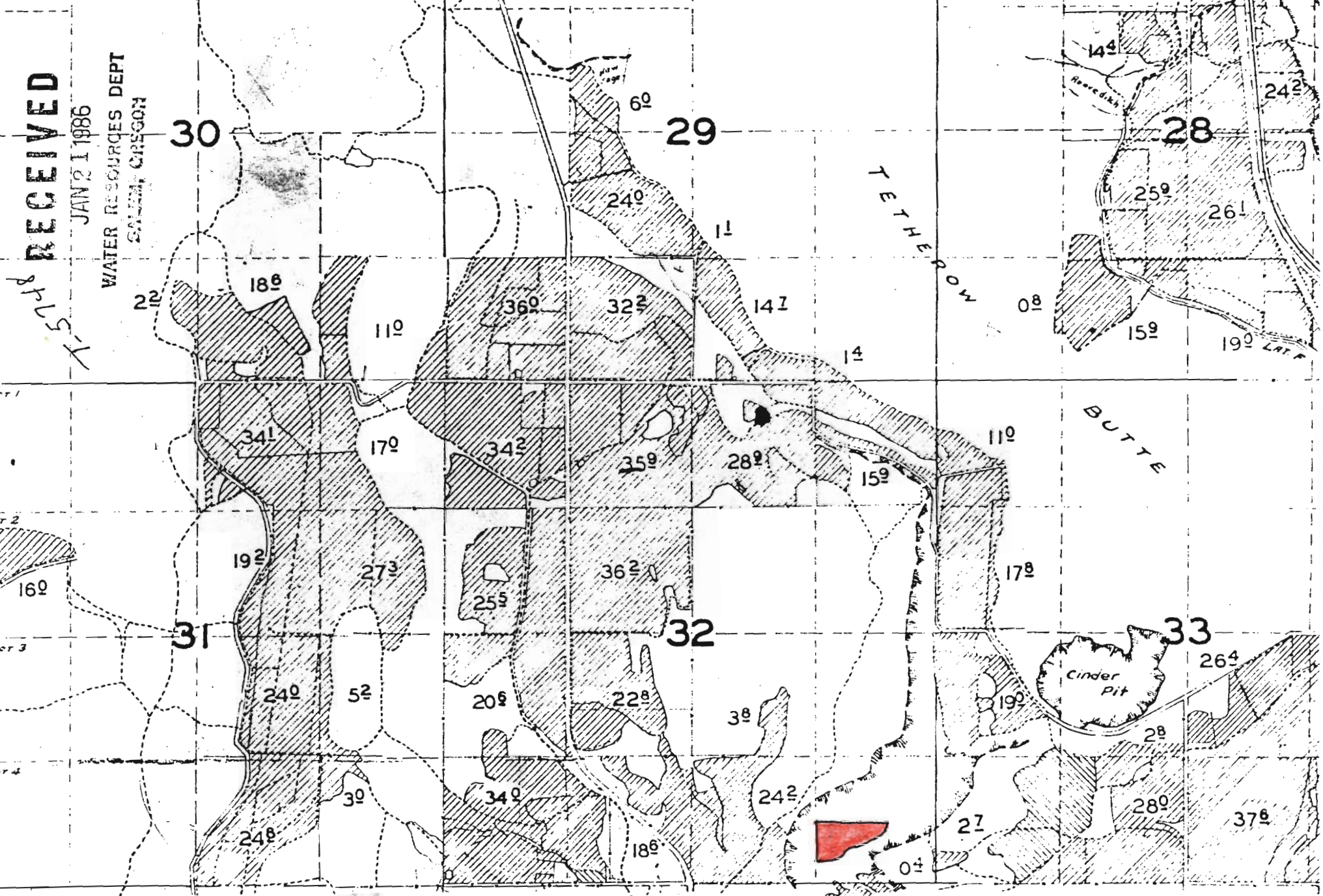
80 ch.

RECEIVED

JAN 21 1986

WATER RESOURCES DEPT
SALMON, OREGON

X-5-1986



5° ACRES ON