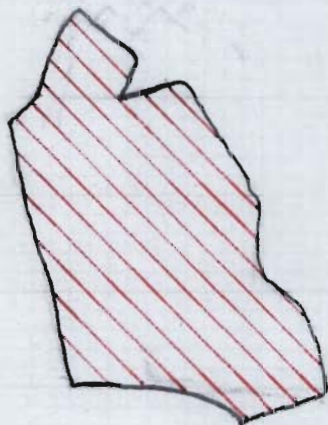


NE 1/4 SE 1/4 SEC. 27 T. 17 S R. 12 E W M

T-5802

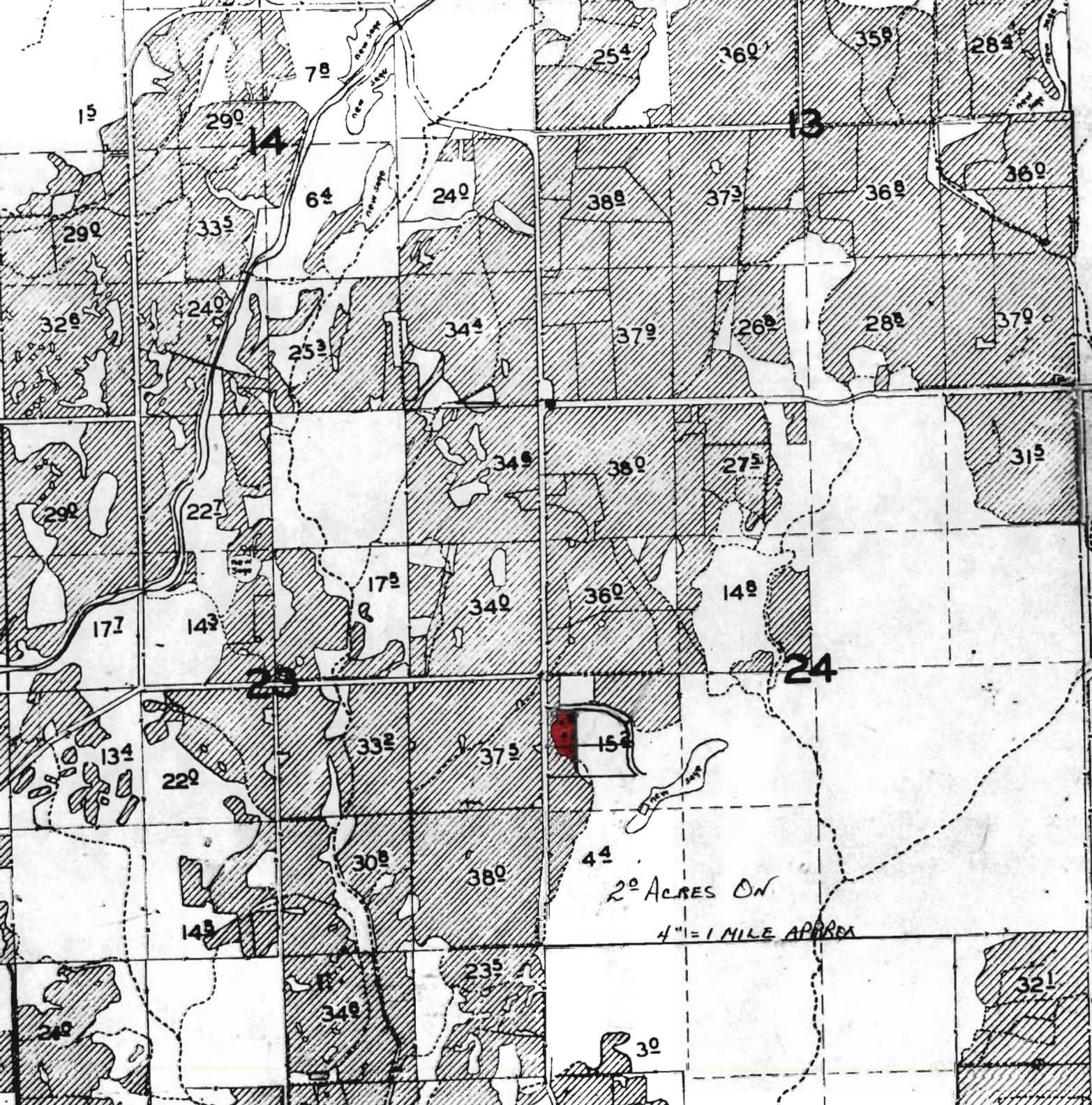
SCALE - 1" = 200'



2⁰ ACRES OFF

W/R ON BY T-C-131

RECEIVED
MAY 20 1966
WATER RESOURCES DEPT
SALT SPRING, MISSOURI



2⁰ ACRES ON
4" = 1 MILE APPROX

7-5802
RECEIVED
MAY 16 1986
WATER RESOURCES DEPT
SALEM, OREGON