

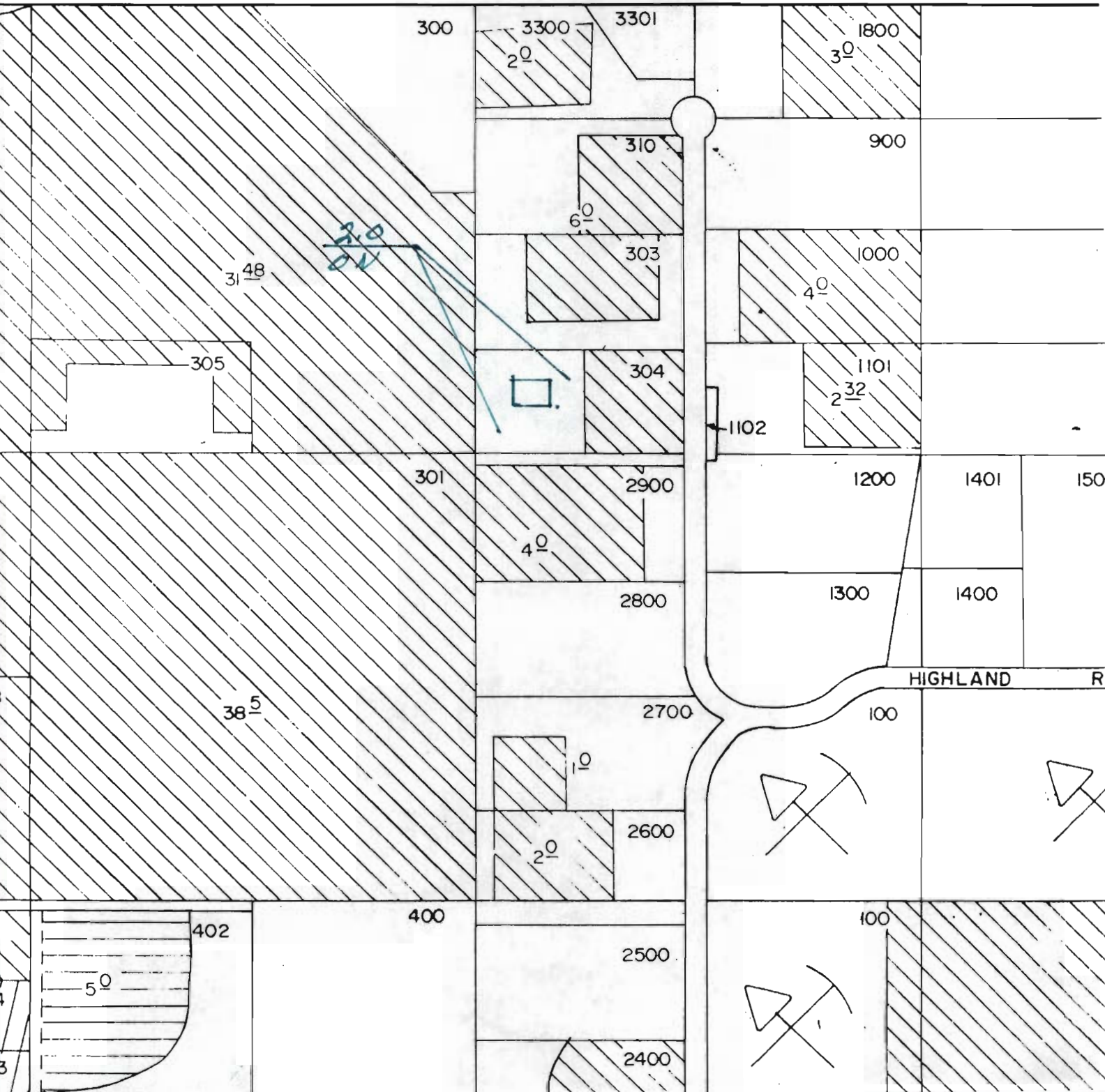
SECTION 30 T.16 S. R.12 E. W.M.

7-5811

1" = 400'

RECEIVED JUN 5 1986
JUN 30 1986 WATER RESOURCES DEPT
WATER RESOURCES DEPT SALEM, OREGON
SALEM, OREGON

19



SECTION 30 T.16 S. R.12 E. W.M.

T-5811

1" = 400'

RECEIVED

JUN 5 1986

WATER RESOURCES DEPT
SALEM, OREGON

19

