

RECEIVED

JUL 2 1986

WATER RESOURCES DEPT
SALEM

RECEIVED
JUN 5 1986
WATER RESOURCES DEPT
SALEM, OREGON

T16 S R 12 EWM

TUMALO

31

32

DESCHUTES RIVER

BEND

HIGHWAY

PITCA

Transfer #186
20 off

NE 1/4 SEC. 28 T16S R12EWM
 Scale 1" = 200'

T-5813

See Map 16 12 21 DRCS DEPT

JUL 21 1986

SALEM, OREGON

RECEIVED

JUN 5 1986

WATER RESOURCES DEPT
 SALEM, OREGON

ROAD

STREET

560'	5800	560'	3300	560'
8		33		
560'	5700	560'	3400	560'
9		32		6
560'	5600	560'	3500	560'
10		31		7
560'	5500	560'	3600	560'
11		30		8
560'	5400	560'	3700	560'
Water ON		29		9
12				
29 LAND	5300	560'	3800	560'
SPRING		28		
Well	5200	560'	3900	560'
They also have Well Water		27		10
14				
560'	5100	560'	4000	560'
15		26		12
560'	5000	560'	4100	560'
16		25		

PILLS

FIRST

ADDIT

2.7

North & South

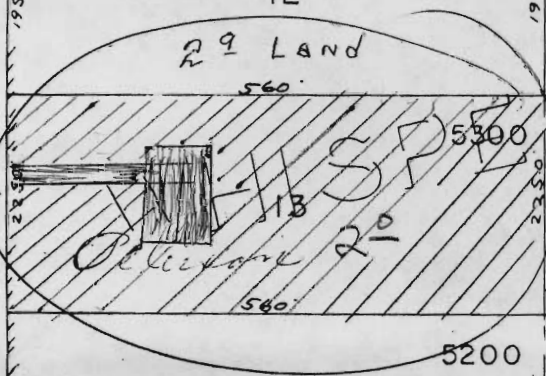
195.0' 195.0' 195.0' 195.0' 195.0' 195.0' 195.0' 225.0' 195.0' 195.0'

195.0' 195.0' 195.0' 195.0' 195.0' 195.0' 195.0' 225.0' 195.0' 195.0'

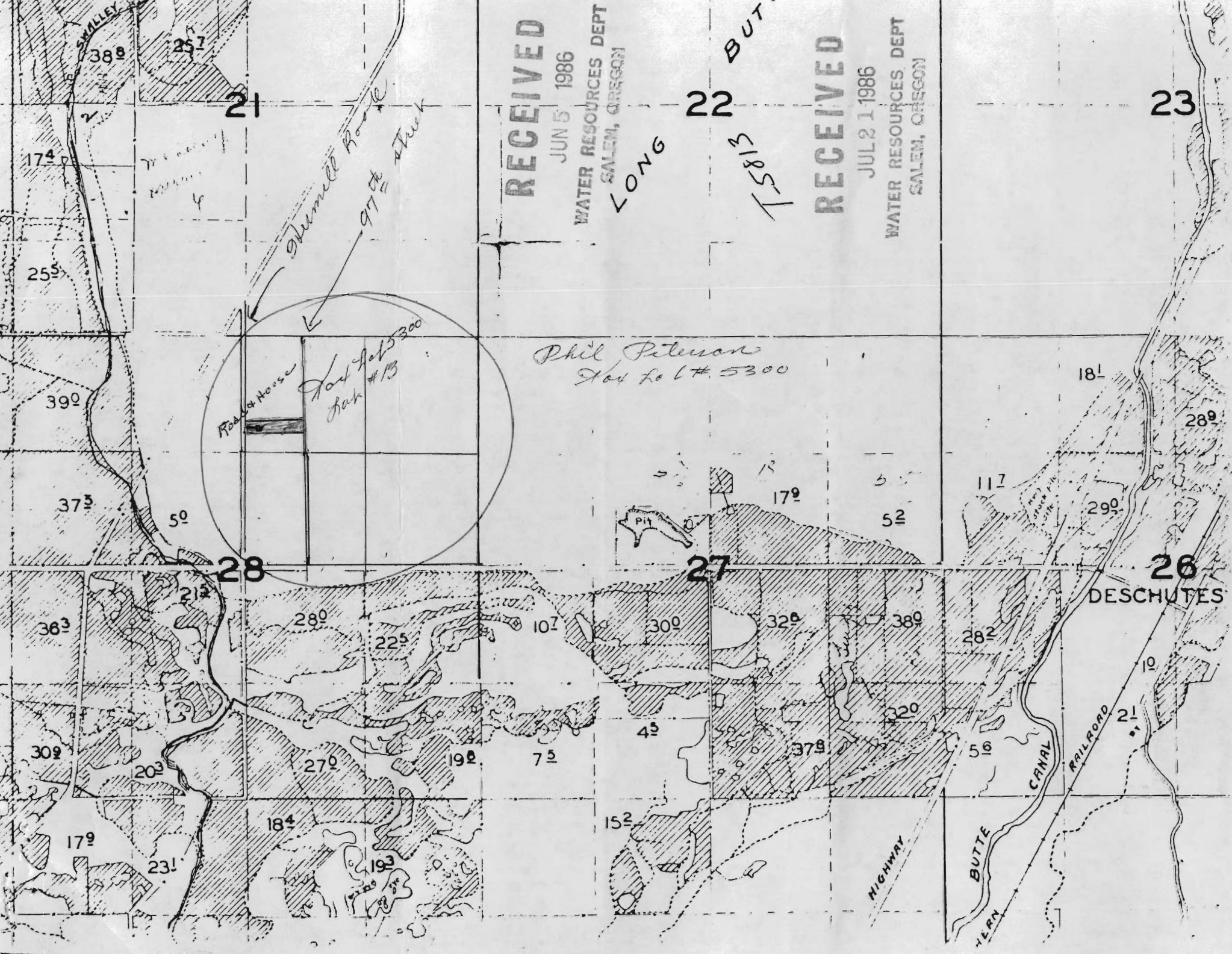
195.0' 195.0' 195.0' 195.0' 195.0' 195.0' 195.0' 225.0' 195.0' 195.0'

560' 560' 560' 560' 560' 560' 560' 560' 560' 560'

560' 560' 560' 560' 560' 560' 560' 560' 560' 560'



07 12 01 PM 1986



RECEIVED

JUN 5 1986

WATER RESOURCES DEPT
SALEM, OREGON

LONG

22

BUTTE

T-5183

RECEIVED

JUL 21 1986

WATER RESOURCES DEPT
SALEM, OREGON

23

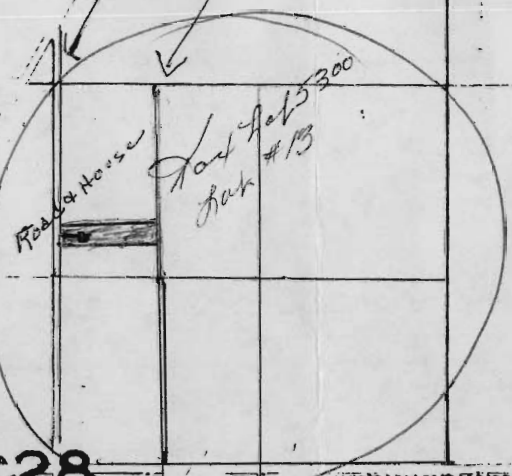
21

28

27

26

DESCHUTES



Phil Peterson
Oak #13 5300

174

255

390

375

50

363

309

179

231

280

225

270

184

193

75

152

300

43

320

378

320

282

56

179

52

117

181

290

289

10

21

SMALLEY

GUMMITT ROAD

97 ft Truck

HIGHWAY

BUTTE CANYON

CANAL

RAILROAD

