

RECEIVED
AUG 15 1986
WATER RESOURCES DEPT
SALEM, OREGON

RECEIVED
JUN 20 1986
WATER RESOURCES DEPT
SALEM, OREGON

RECEIVED
JUL - 7 1986
WATER RESOURCES DEPT
SALEM, OREGON

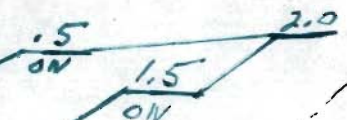
PINEHURST

TUMALO RESERVOIR

ROAD

T-5820

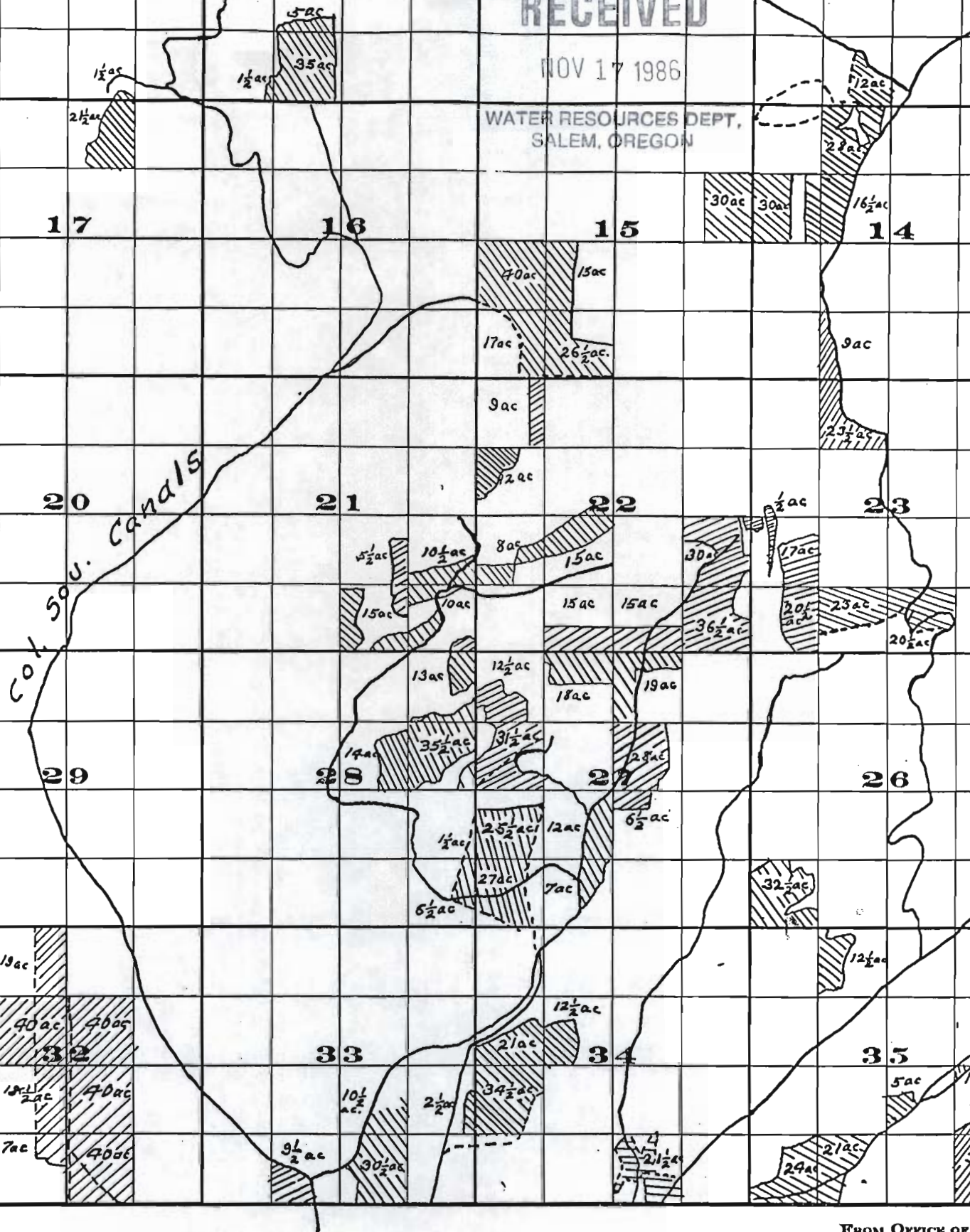
16-11-34



RECEIVED

NOV 17 1986

WATER RESOURCES DEPT,
SALEM, OREGON

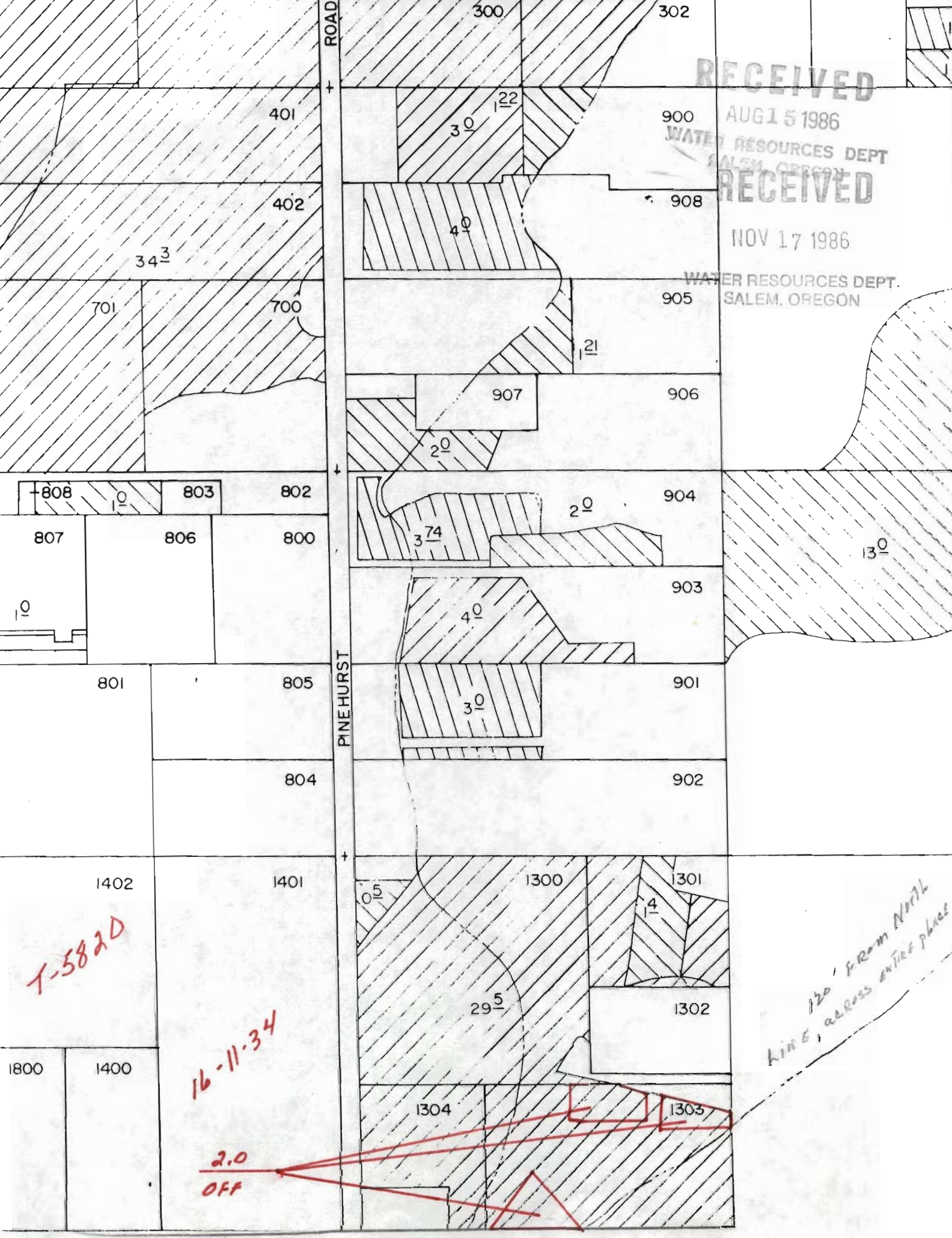


DESIGNED BY CHEVRELL, WYO

Examined by H. K. Donnelly Sept. 1909
H. Lewis - State Engineer.

FROM OFFICE OF

Tumalo Cr



RECEIVED

AUG 15 1986

WATER RESOURCES DEPT.
SALEM, OREGON

RECEIVED

NOV 17 1986

WATER RESOURCES DEPT.
SALEM, OREGON

ROAD

PINEHURST

T-582D

16-11-34

2.0
OFF

120' FROM NORTH
LINE, across ENTIRE PLACE

401

402

701

700

808

803

802

807

806

800

801

805

804

1402

1401

1800

1400

1304

1303

29.5

4

1300

1301

1302

30

22

40

34.3

900

908

905

907

906

904

903

901

902

13.0

0.5

40

30

37.4

20

20

21

300

302