

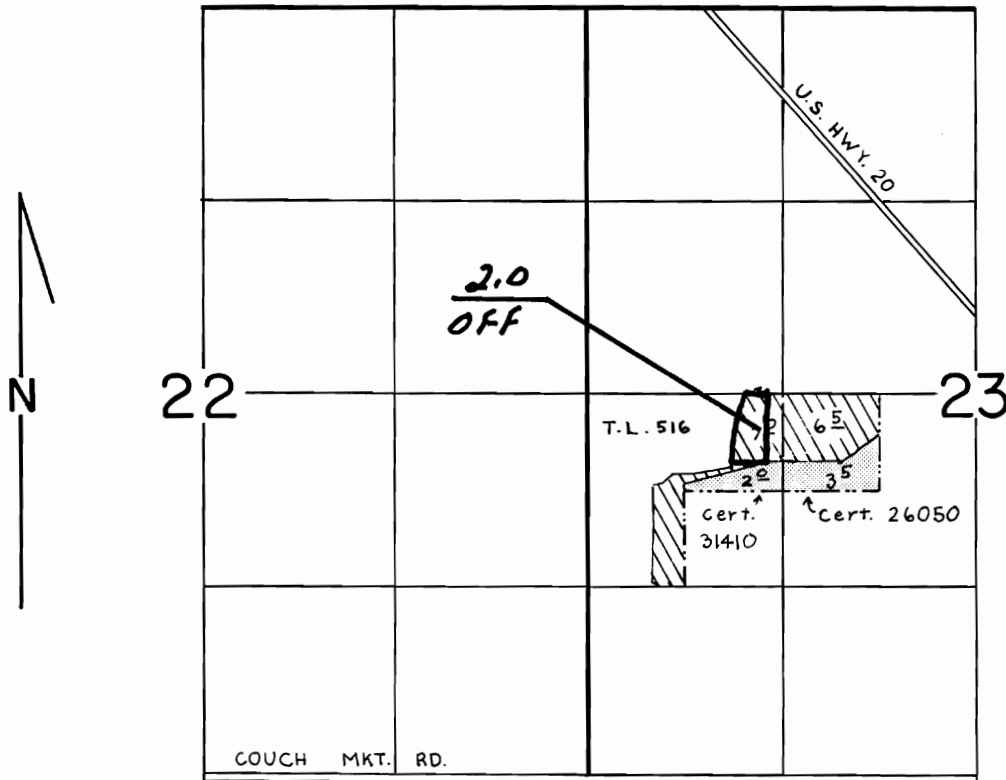
**RECEIVED**

OCT - 6 1986

WATER RESOURCES DEPT.  
SALEM, OREGON

T.16S., R.11E., W.M.

f-5821



SCALE: 1" = 1320'

**FINAL PROOF SURVEY**

UNDER

PART OF  
TRANSFER NO. 3872

IN NAME OF

**DAVE WAGNER**

Surveyed JUNE 4, 1986, by LESLIE OLSON