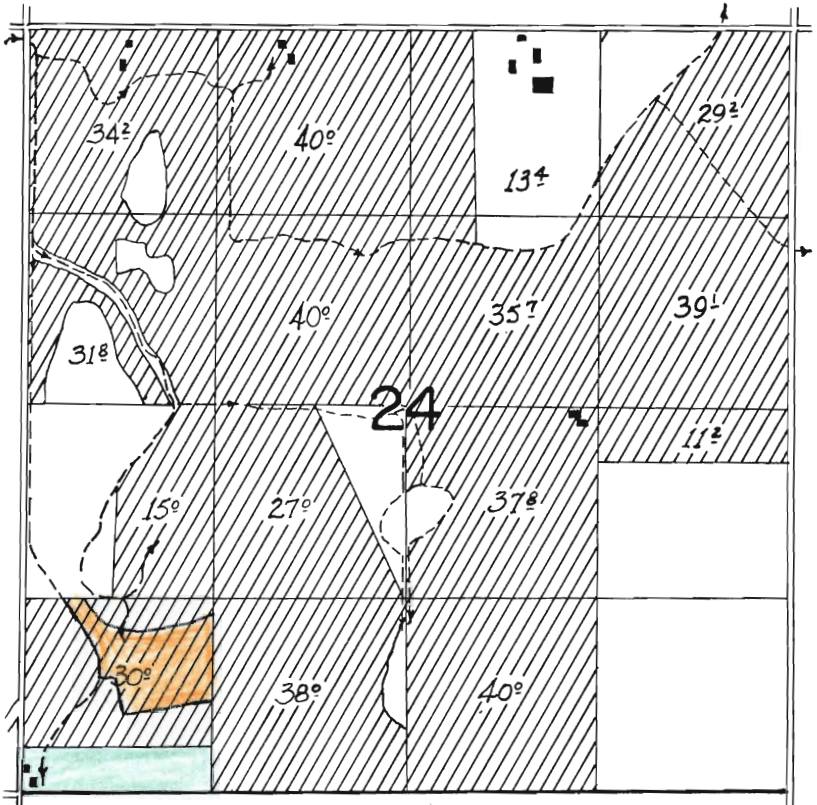


T-5833

T 39 S, R 19 E, W.M.



Transfer 10^{1/2} Acres out to
S^{1/2}, S^{1/2}, SW^{1/4}, SW^{1/4} Sec 24

Transfer in 10 Acres

RECEIVED
JUL 23 1986
WATER RESOURCES DEPT
SALEM, OREGON