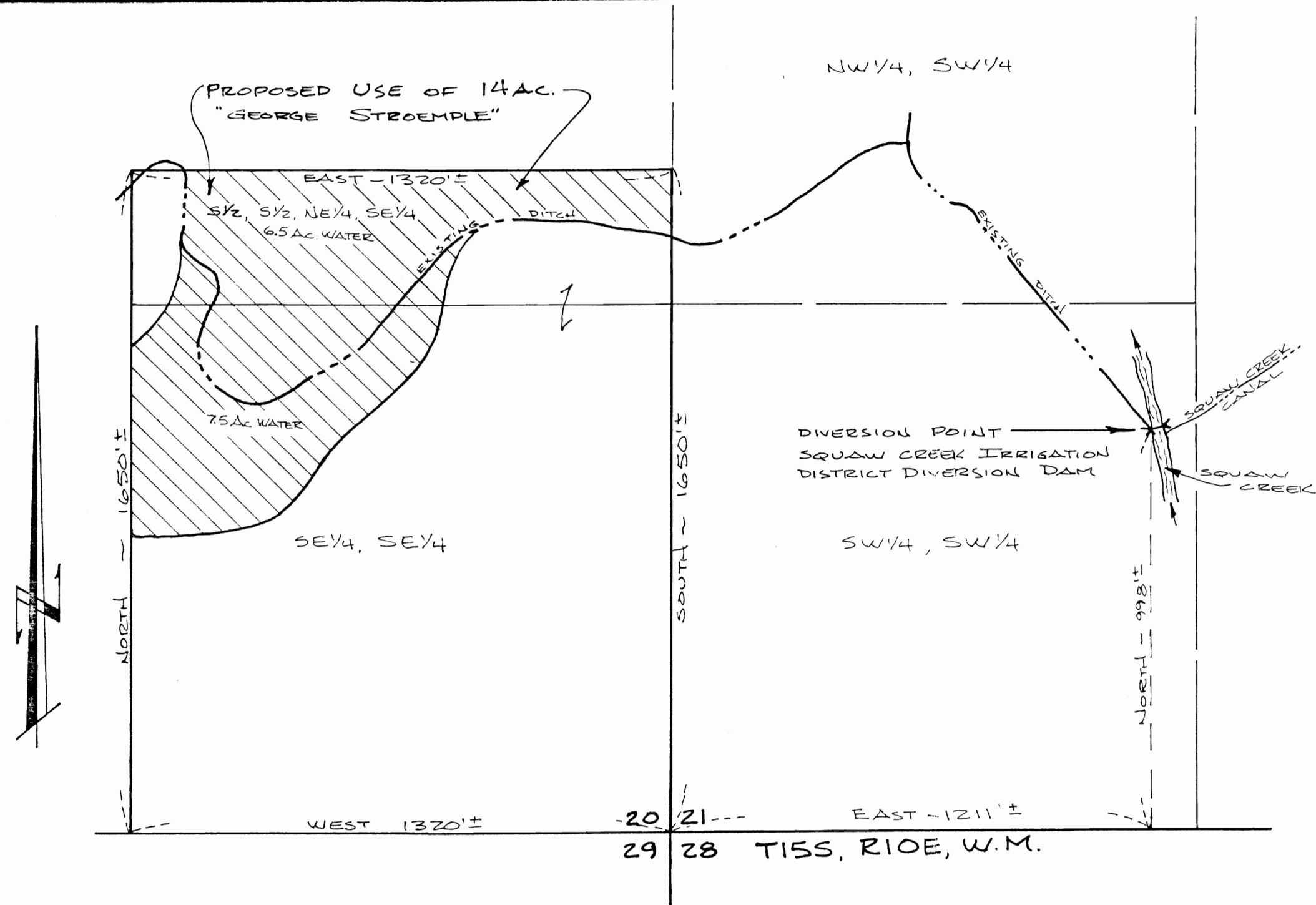


T-5493



MAP "B"

REGISTERED PROFESSIONAL LAND SURVEYOR  <i>Frederick A. Ast, Jr.</i>  OREGON JULY 17, 1981 FREDERICK A. AST, JR. 1938	LOCATION MAP 14 AC. OF PROPOSED WATER USAGE "GEORGE STROEMPLE"	DATE: 6/11/84
	FRED A. AST, JR. & ASSOCIATES P. O. BOX 751 _____ 351 W. CASCADE SISTERS, OREGON _____ 97759 549-7851	SCALE: 1" = 300' DRAWN: F.A.A. REV:
		SHEET 2 OF 2