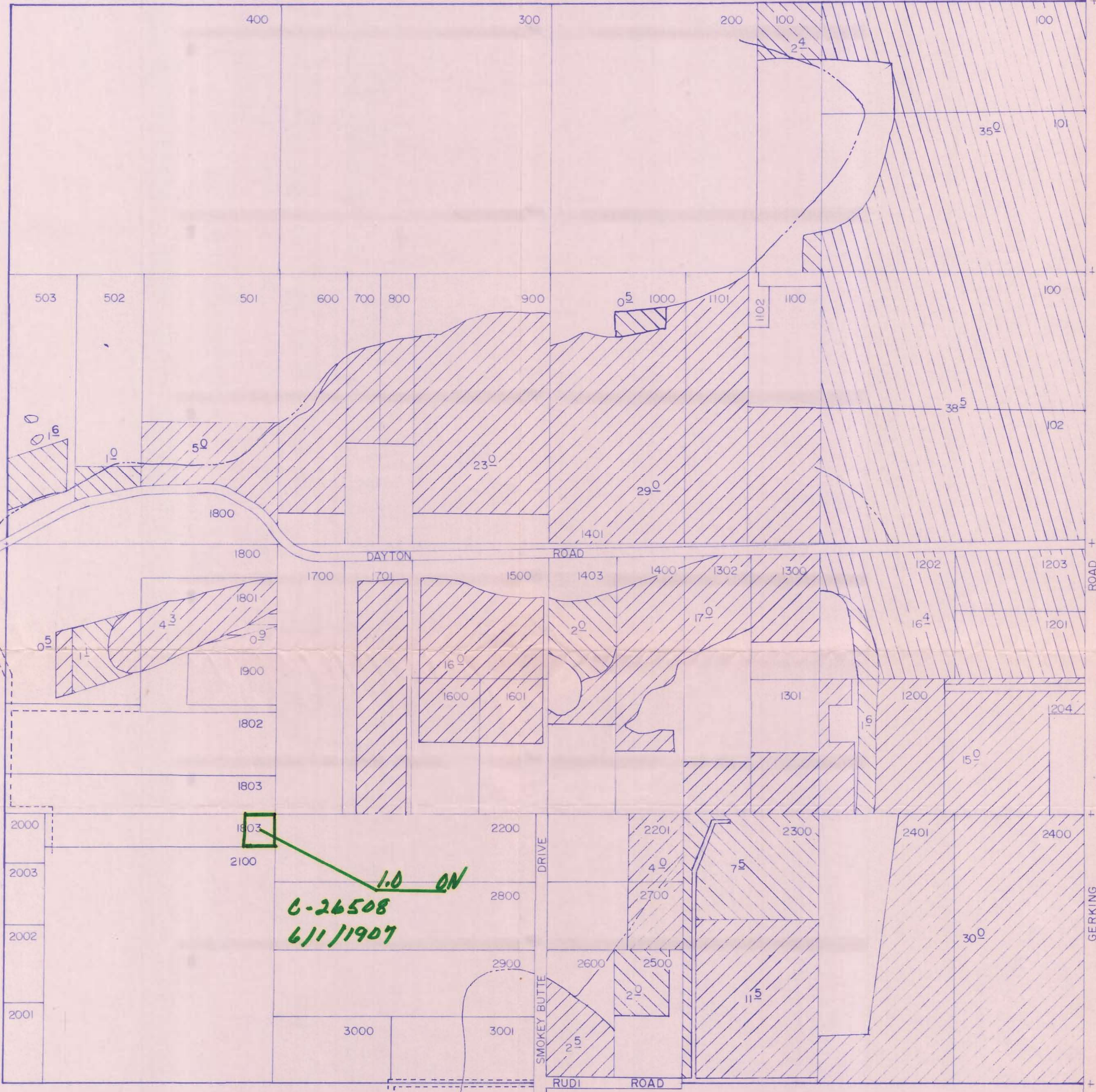
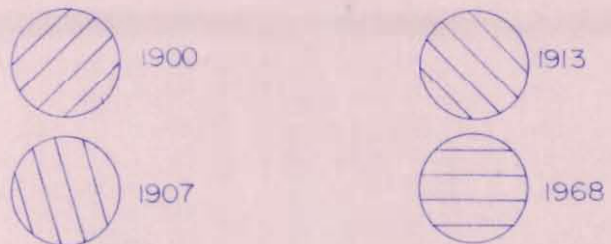


1" = 400'

13



25



**RECEIVED**

MAY 24 1985

WATER RESOURCES DEPT  
SALEM, OREGON

**RECEIVED**

JUN 19 1985

WATER RESOURCES DEPT  
SALEM, OREGON

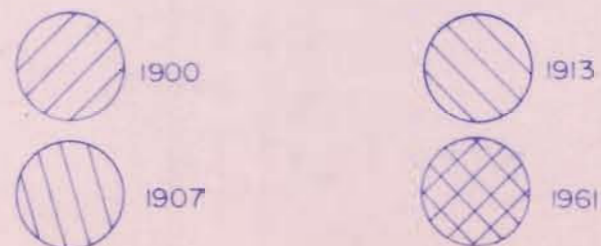
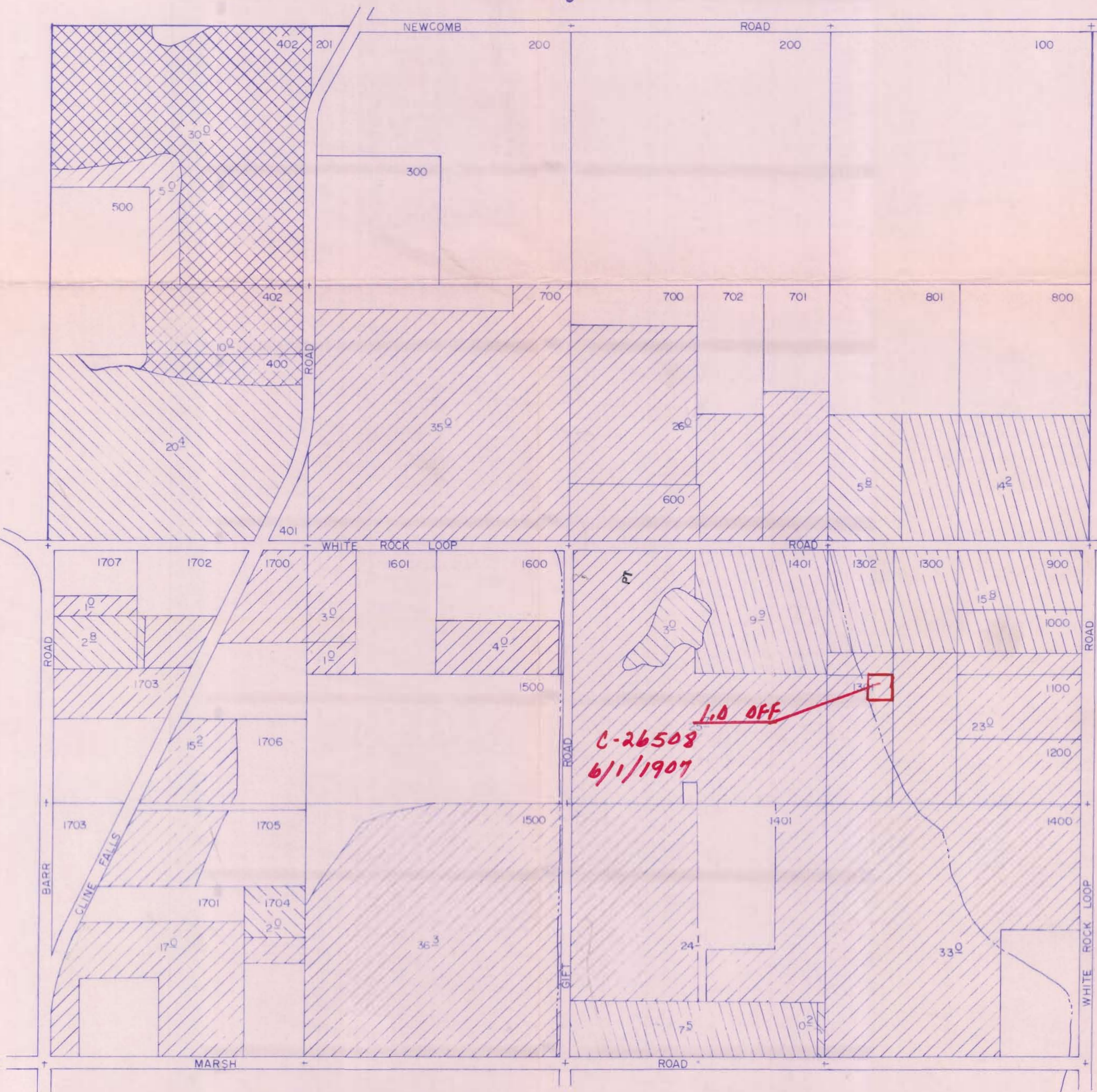
*Revised thru 5/1/85*

SECTION 8 T.16S. R.12E. W. M.

T-5646

1" = 400'

5



**RECEIVED**  
MAY 24 1985  
WATER RESOURCES DEPT  
SALEM, OREGON