

# FINAL PROOF MAP

FOR

PATRICK J. KELLEY

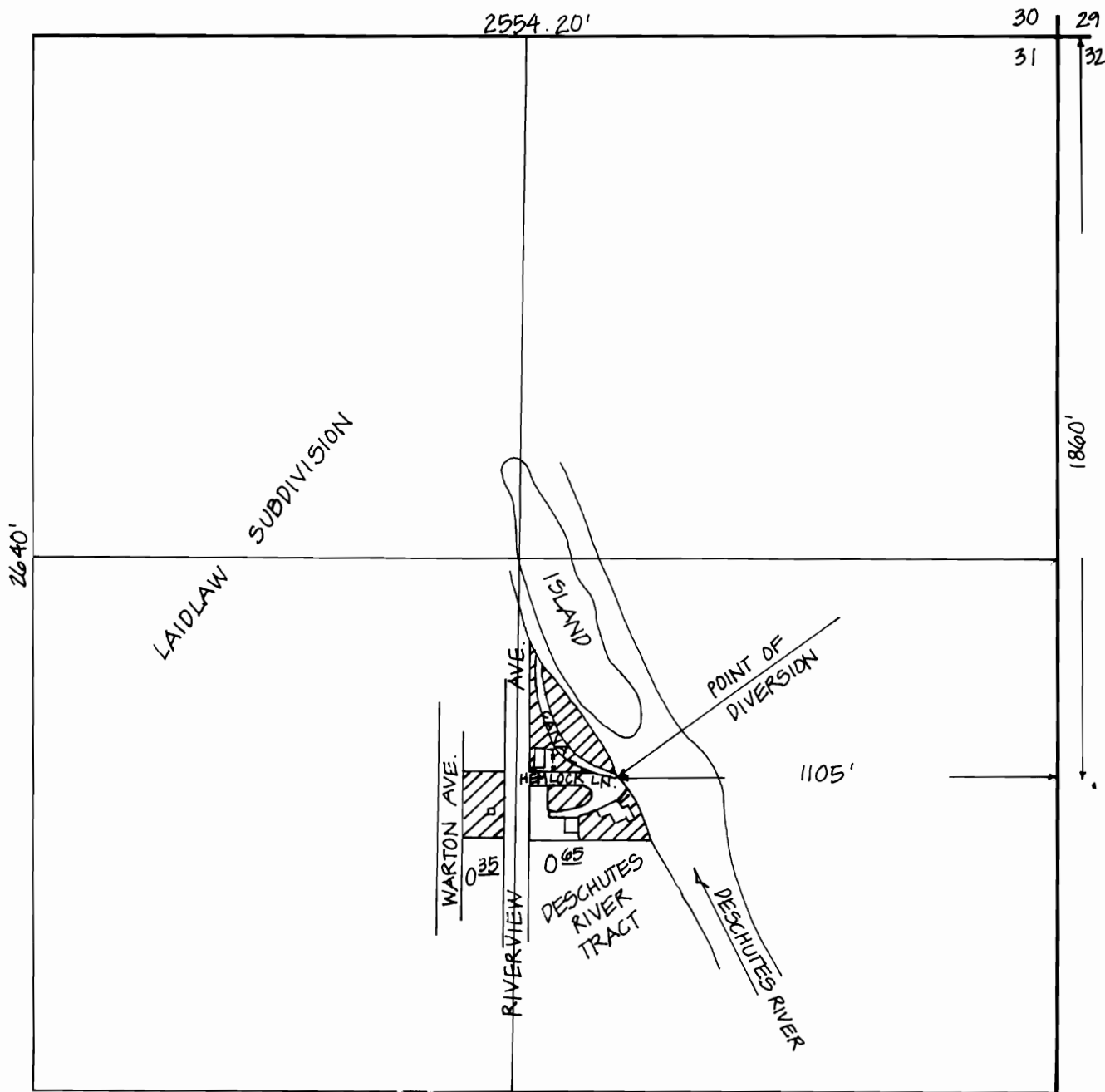
T-6233

IN THE S<sup>1</sup>/<sub>2</sub> OF THE NE<sup>1</sup>/<sub>4</sub>, SEC. 31

T. 16 S., R. 12 E., W.M.,

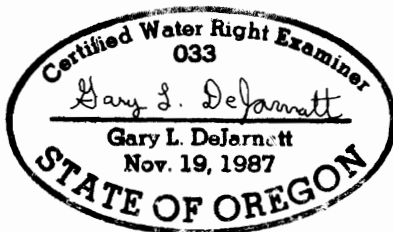
DESCHUTES COUNTY, OREGON

SCALE 1" = 400'



NO REPRESENTATION IS INTENDED TO PROVIDE DIMENSIONS OR LOCATION OF PROPERTY OWNERSHIP LINES.

TOTAL = 0.35 + 0.65 = 1.0 ACRES



PREPARED BY:  
DEJARNATT LAND SURVEYS, INC.  
63885 N. HWY. 97  
BEND, OREGON 97701  
(503) 382-4192  
JOB# 88092P  
SHEET 1 OF 1  
SEPTEMBER 10, 1992