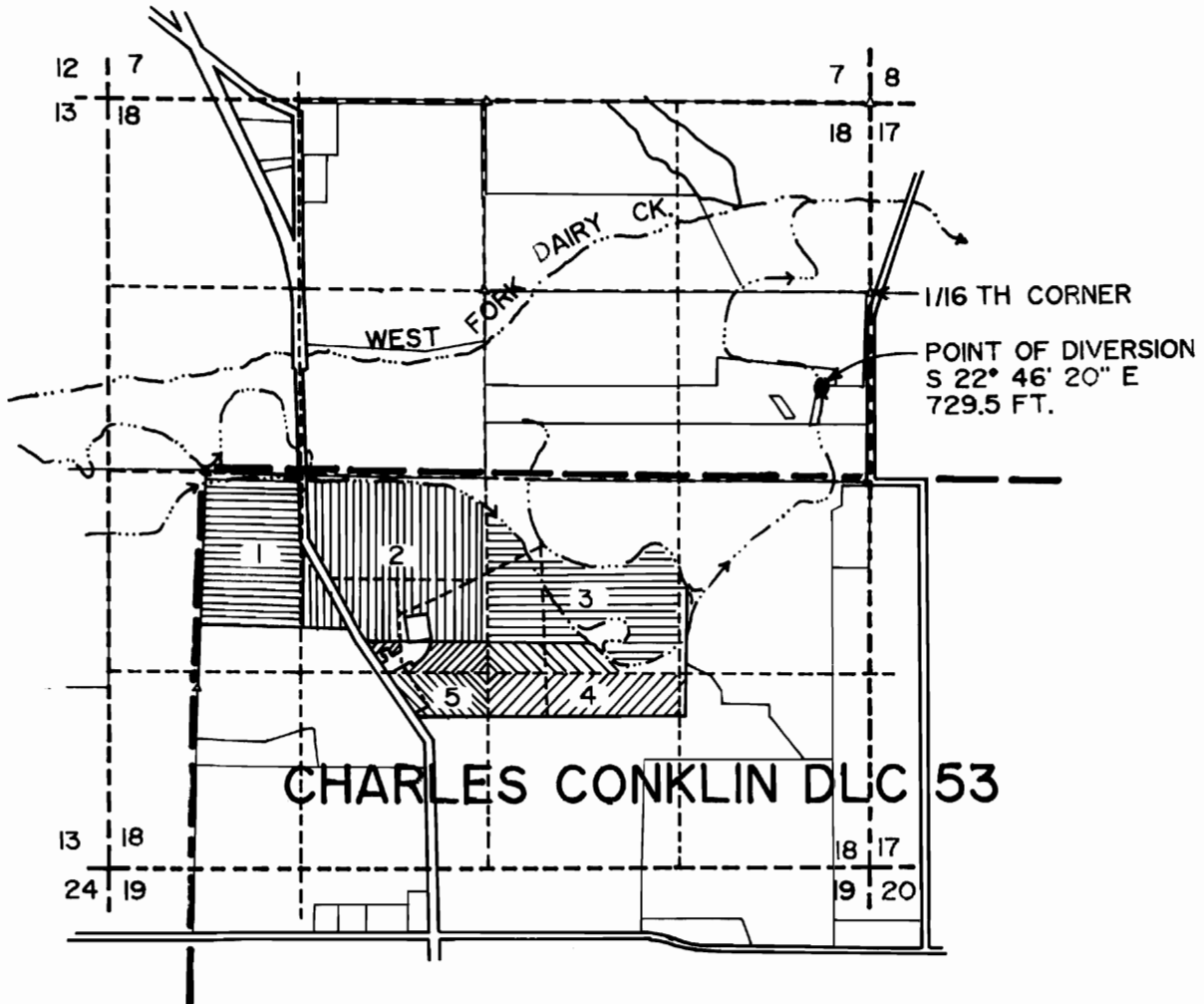


T.1N.,R.3W.,W.M. SECTION 18



- 1 NW 1/4 SW 1/4
15.0 ACRES
(CERT. 14464)
- 2 NE 1/4 SW 1/4
33.0 ACRES
(CERT. 14464)
3.0 ACRES
(CERT. 39603)
- 3 NW 1/4 SE 1/4
17.0 ACRES
(CERT. 14464)
2.3 ACRES
(CERT. 39603)
- 4 SW 1/4 SE 1/4
12.2 ACRES
(CERT. 39603)
- 5 SE 1/4 SW 1/4
6.2 ACRES
(CERT. 39603)

SCALE 1" = 1320'

FINAL PROOF SURVEY UNDER

Transfer 6302
IN NAME OF
EUGENE EVERS

Surveyed SEPT. 18, 1992, by A. M. KLEIN



THIS MAP IS FOR THE PURPOSE
OF IDENTIFYING THE LOCATION OF
THE WATER RIGHT ONLY AND IS
NOT INTENDED TO PROVIDE LEGAL
DIMENSIONS OR THE LOCATION OF
PROPERTY OWNERSHIP LINES.