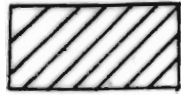


ON-LAND.....Edwin Lonergan.....D.V. 276, P. 110

Being Tax Lot 18-12-02-01318, situate in the NE 1/4 SE 1/4 of Section 12, T. 18 S., R. 12 E., W. M., Deschutes County, Oregon



ON-LAND, 1.0 Acre Allotment on a portion of a 2.18 Acre, gross area, tract, to be transferred from lands of Duane Balcom in the NE 1/4 SE 1/4 of Section 23, T. 17 S., R. 14 E.

plat prepared 12 August 1989 by: RAYMOND E. OMAN

60898 RIDGE DRIVE
BEND, OR 97702

THIS PLAT IS MADE FOR WATER RIGHTS
ESTABLISHMENT OR TRANSFER AND DOES
NOT CONSTITUTE A BOUNDARY SURVEY.
PLAT UNDER O.R.S. 92, 94 OR 209.

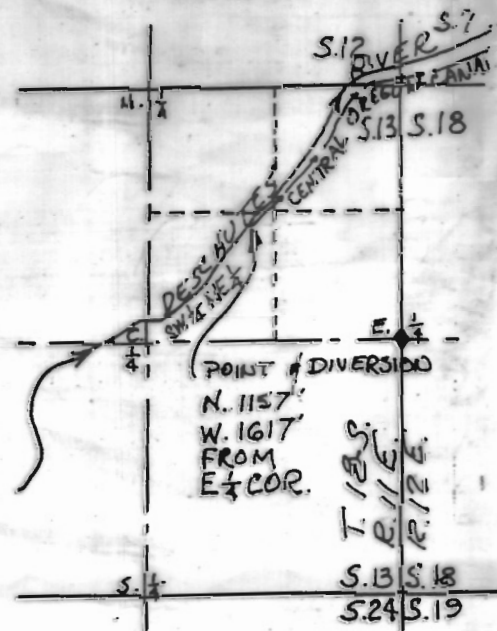
PRELIMINARY PLAT

SUBJECT TO REVIEW BY
OREGON STATE
WATER RESOURCES DEPT.

T-6297



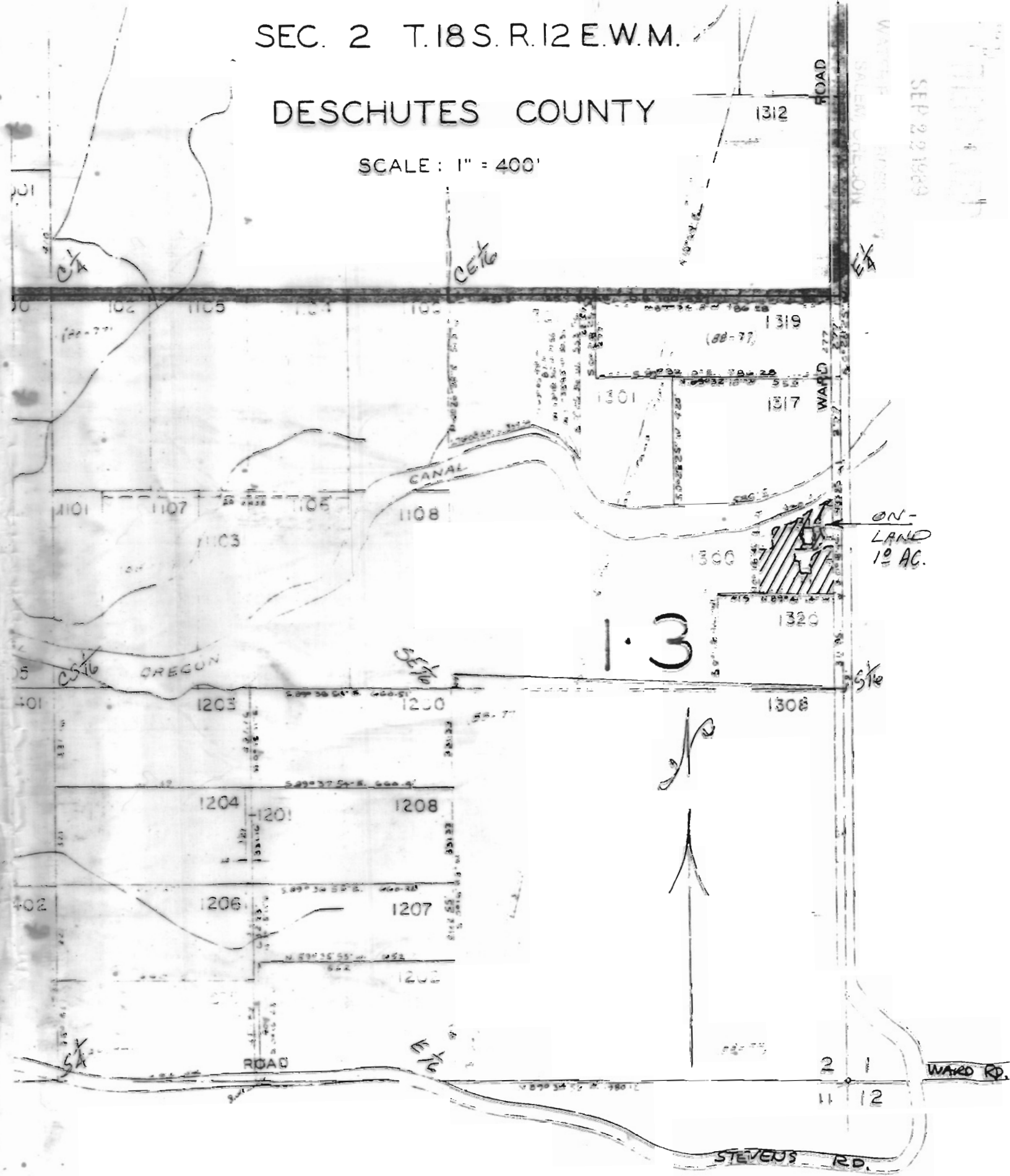
890600-A



SEC. 2 T.18 S. R.12 E. W.M.

DESCHUTES COUNTY

SCALE: 1" = 400'



18 12 2

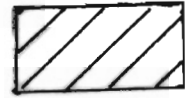
SEP 22 1989

SECTION 6 T.18S. R.13E.W.M.
 DESCHUTES COUNTY

ON-LAND.....Ben Tuma.....D.V. 146, P. 2786

Being Tax Lot 18-13-06-00100 & -00101, situate in the NE 1/4 NE 1/4 of Section 6, T. 18 S., R. 13 E., W. M., Deschutes County, Oregon

1"=400'



ON-LAND, 11.0 Acres, to be transferred from lands of Duane Balcom in the NE 1/4 SE 1/4 of Section 23, T. 17 S., R. 14 E.

plat prepared 12 August 1989 by: RAYMOND E. OMAN

60898 RIDGE DRIVE
 BEND, OR 97702

THIS PLAT IS MADE FOR WATER RIGHTS ESTABLISHMENT OR TRANSFER AND DOES NOT CONSTITUTE A BOUNDARY SURVEY. PLAT UNDER O.R.S. 92, 94 OR 209.

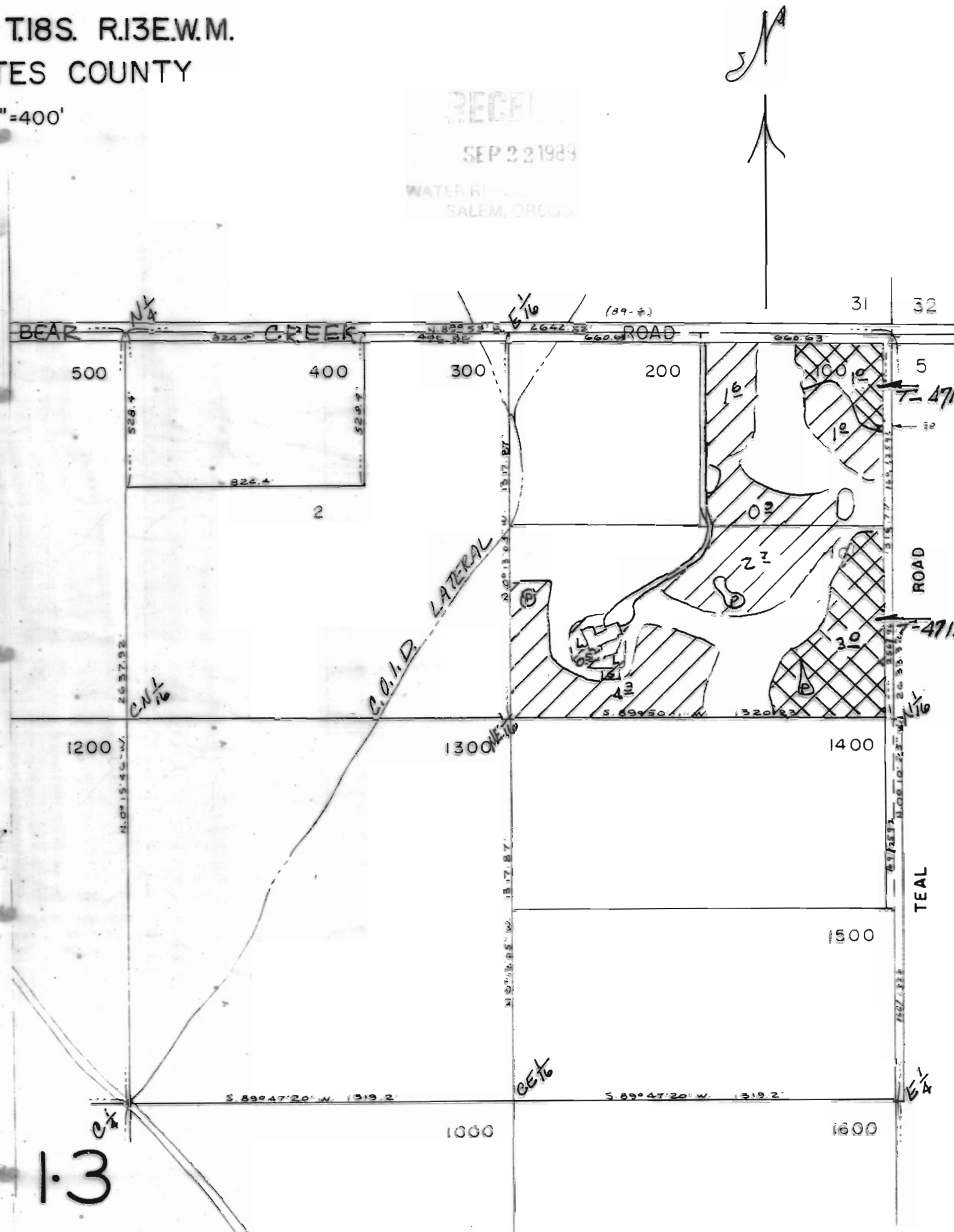
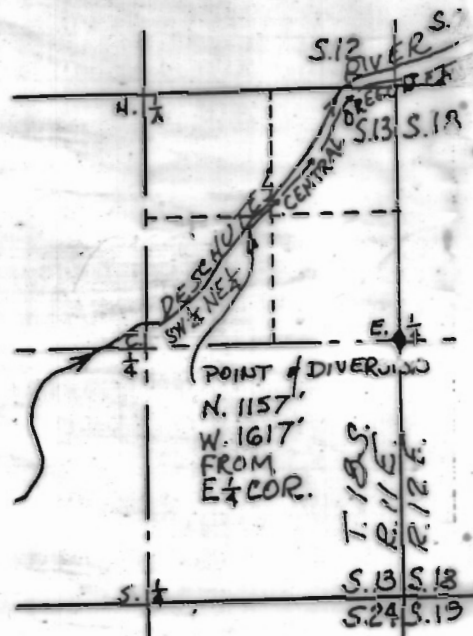
PRELIMINARY PLAT

SUBJECT TO REVIEW BY
 OREGON STATE
 WATER RESOURCES DEPT.

7-6297



890600-C




SE 1/4 SEC. 24 T. 17 S. R. 12 E. W. M.

DESCHUTES COUNTY

1"=200'

ON-LAND...Tom Kosinski.....D. V. 147 , P. 2331

Tax Lot 17-12-24D-00100, being Lot 1, Cleve's Acres Subdivision, situate in the NE 1/4 SE 1/4 of Section 24, T. 17 S., R. 12 E., W. M., Deschutes County, Oregon

 ON-LAND, 5.0 Acres consisting of 1.4 acres wooded pasture and 3.6 acres cleared pasture, to be transferred from lands of Duane Balcom in the NE 1/4 SE 1/4 of Section 23, T. 17 S., R. 14 E.

plat prepared 12 August 1989 by; **RAYMOND E. OMAN**
60898 RIDGE DRIVE
BEND, OR 97702

THIS PLAT IS MADE FOR WATER RIGHTS ESTABLISHMENT OR TRANSFER AND DOES NOT CONSTITUTE A BOUNDARY SURVEY PLAT UNDER O.R.S. 92, 94 OR 209.

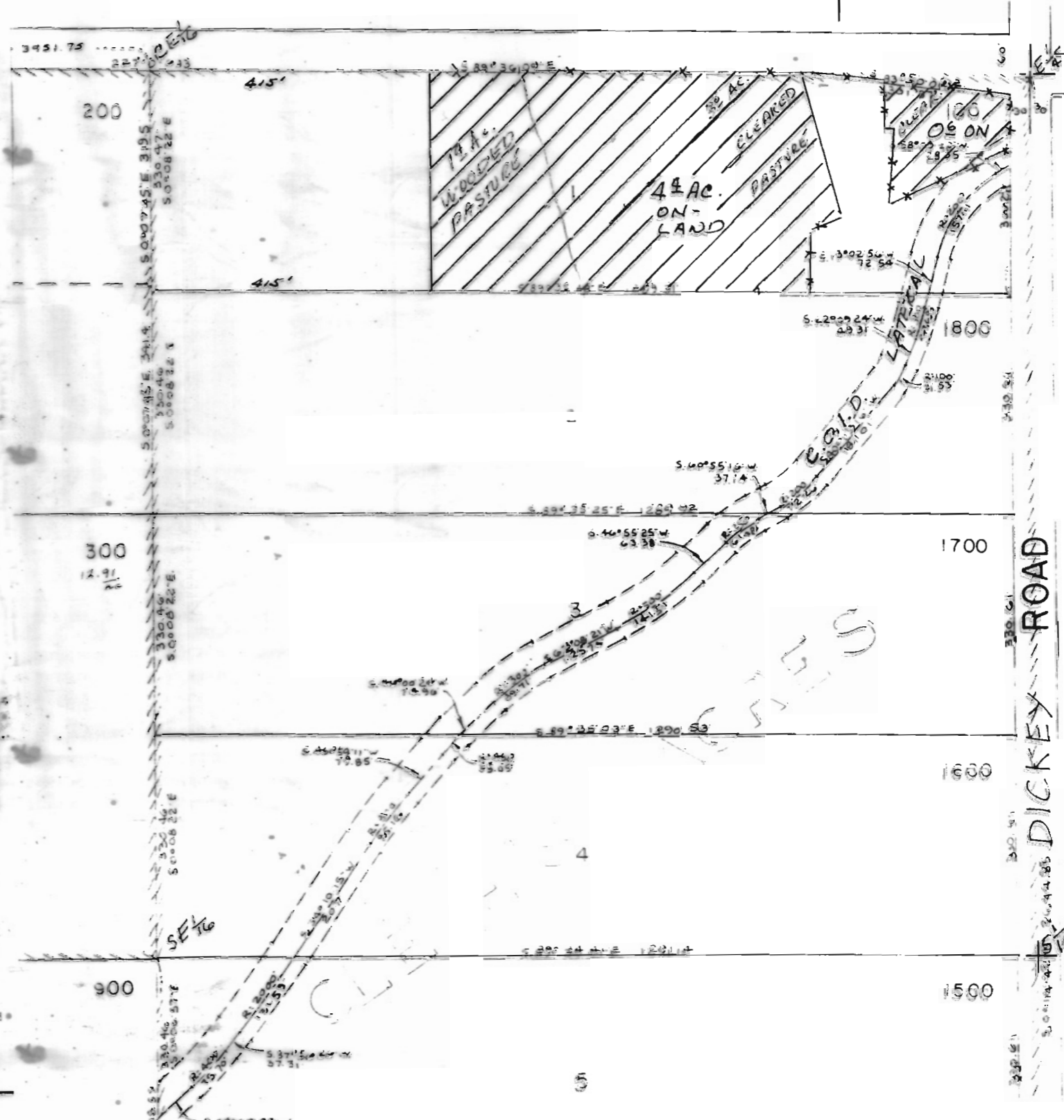
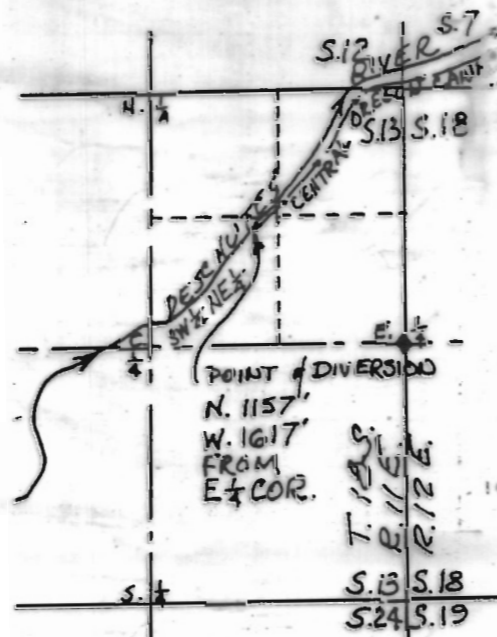
PRELIMINARY PLAT

SUBJECT TO REVIEW BY
OREGON STATE
WATER RESOURCES DEPT.

7-6297



890600-B



OFF-LAND.....Duane J. & Joanne E. Balcom.....D.V. 162, P. 1617

Being Tax Lot 17-14-23-01000, situate in the NE 1/4 SE 1/4 & SE 1/4 NE 1/4 of Section 23, T. 17 S., R. 14 E., W. M., Deschutes County, Oregon



OFF-LAND, 40.0 Acres in the NE 1/4 SE 1/4 AND
7.0 Acres in the SE 1/4 NE 1/4, BEING
47.0 Acres, IN ALL, to be transferred as follows:

- 1.0 Acre to Edwin Lonergan in the NE 1/4 SE 1/4 of Section 2, T. 18 S., R. 12 E.
- 5.0 Acres to Tom Kosinski in the N 1/2 NE 1/4 NE 1/4 of Section 2, T. 17 S., R. 12 E.
- 11.0 Acres to Ben Tuma in the NE 1/4 NE 1/4 of Section 6, T. 18 S., R. 13 E.
- 30.0 Acres to Henry Knoche in the SE 1/4 NE 1/4, the SW 1/4 NE 1/4, the NW 1/4 SE 1/4, and the NE 1/4 SE 1/4 of Section 36, T. 14 S., R. 14 E.

plat prepared 12 August 1989 by: **RAYMOND E. OMAN**
60898 RIDGE DRIVE
BEND, OR 97702

THIS PLAT IS MADE FOR WATER RIGHTS ESTABLISHMENT OR TRANSFER AND DOES NOT CONSTITUTE A BOUNDARY SURVEY. PLAT UNDER O.R.S. 92, 94 OR 209.

PRELIMINARY PLAT

SUBJECT TO REVIEW BY
OREGON STATE
WATER RESOURCES DEPT.

T-6297



890600

