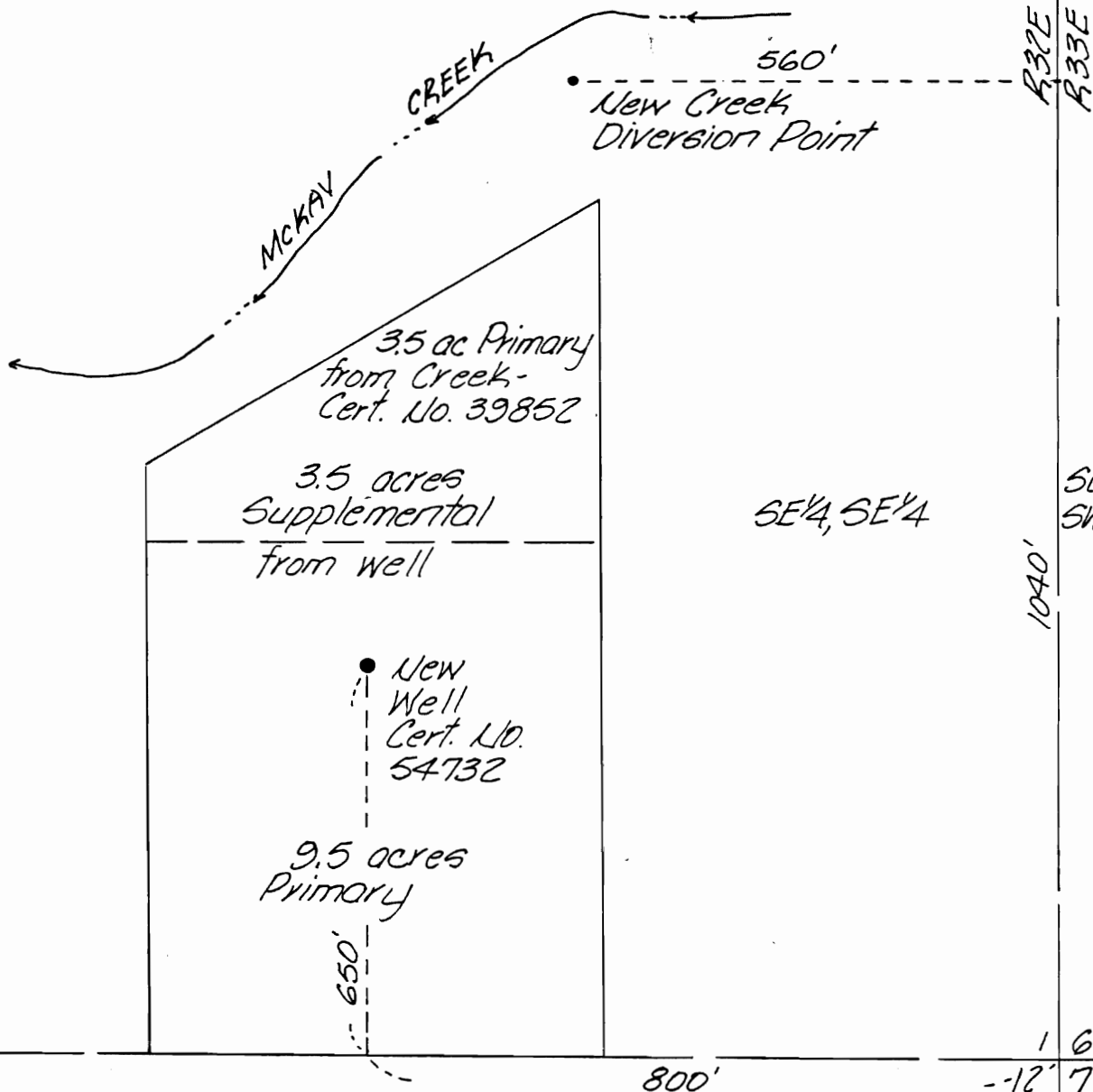


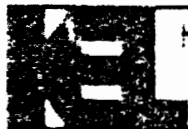
NE¹/₄, SE¹/₄

SEP 28 1990

WATER RESOURCES DEPT
OREGON



NE¹/₄, NE¹/₄



KRUMBEIN ENGINEERING LTD.
ENGINEERS - SURVEYORS - PLANNERS
361 S.E. Second Pendleton, Oregon

Scale 1"=200'	Drn. By MLD	Drng. No 90-11A	Revision 1
Date 9-15-90	Ckd. By DHK	Job No. 90-27	Revision 2

Water Transfer for

SAXTON



T-6429

SE¹/₄, SE¹/₄, Sec 1, T15, R32E, W.M.