

T. 3 N., R. 29 & 30 E., W.M.



SCALE 1" = 1320'

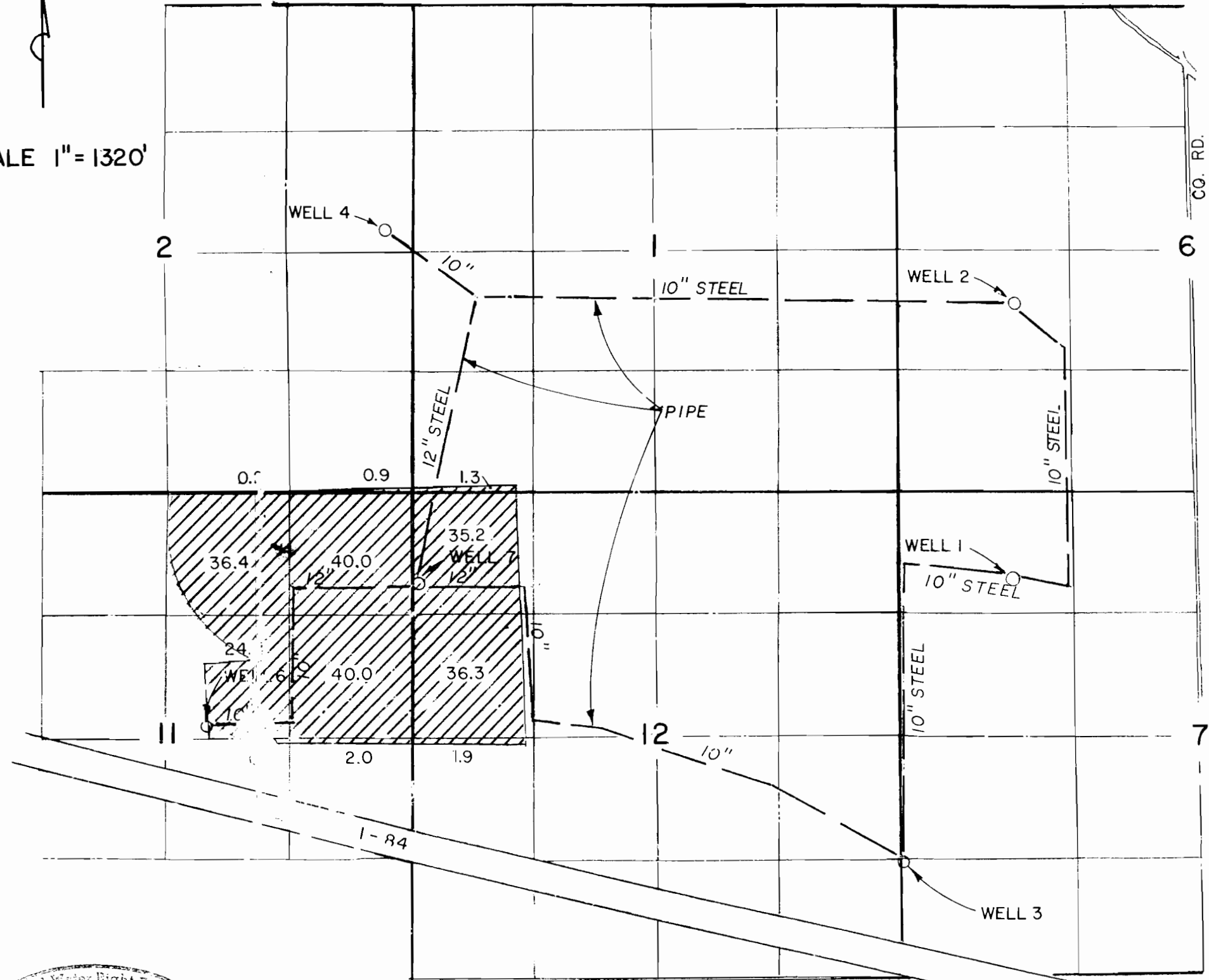
FINAL PROOF SURVEY

UNDER

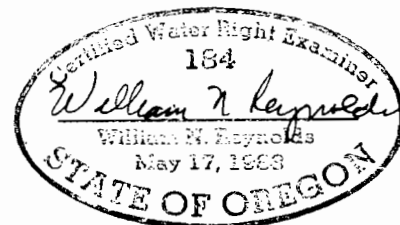
Transfer No. 6474

IN NAME OF

ROBERT C., RICK L., & DOUGLAS L. HALE



THIS MAP IS FOR THE PURPOSE OF IDENTIFYING THE LOCATION OF WATER RIGHTS ONLY AND IS NOT INTENDED TO PROVIDE LEGAL DIMENSIONS OR LOCATIONS OF PROPERTY OWNERSHIP LINES.



- WELL 1 - 4340' N & 1830' W FROM S1/4 CORNER OF SECTION 7.
- WELL 2 - 2016' N & 1330' E FROM SW CORNER OF SECTION 6.
- WELL 3 - 1420' S & 40' E FROM W1/4 CORNER OF SECTION 7.
- WELL 4 - 180' N & 260' W FROM E1/4 CORNER OF SECTION 2.
- WELL 6 - 132' N & 2190' W FROM E1/4 CORNER OF SECTION 11.
- WELL 7 - 1010' S & 40' E FROM NW CORNER OF SECTION 12.