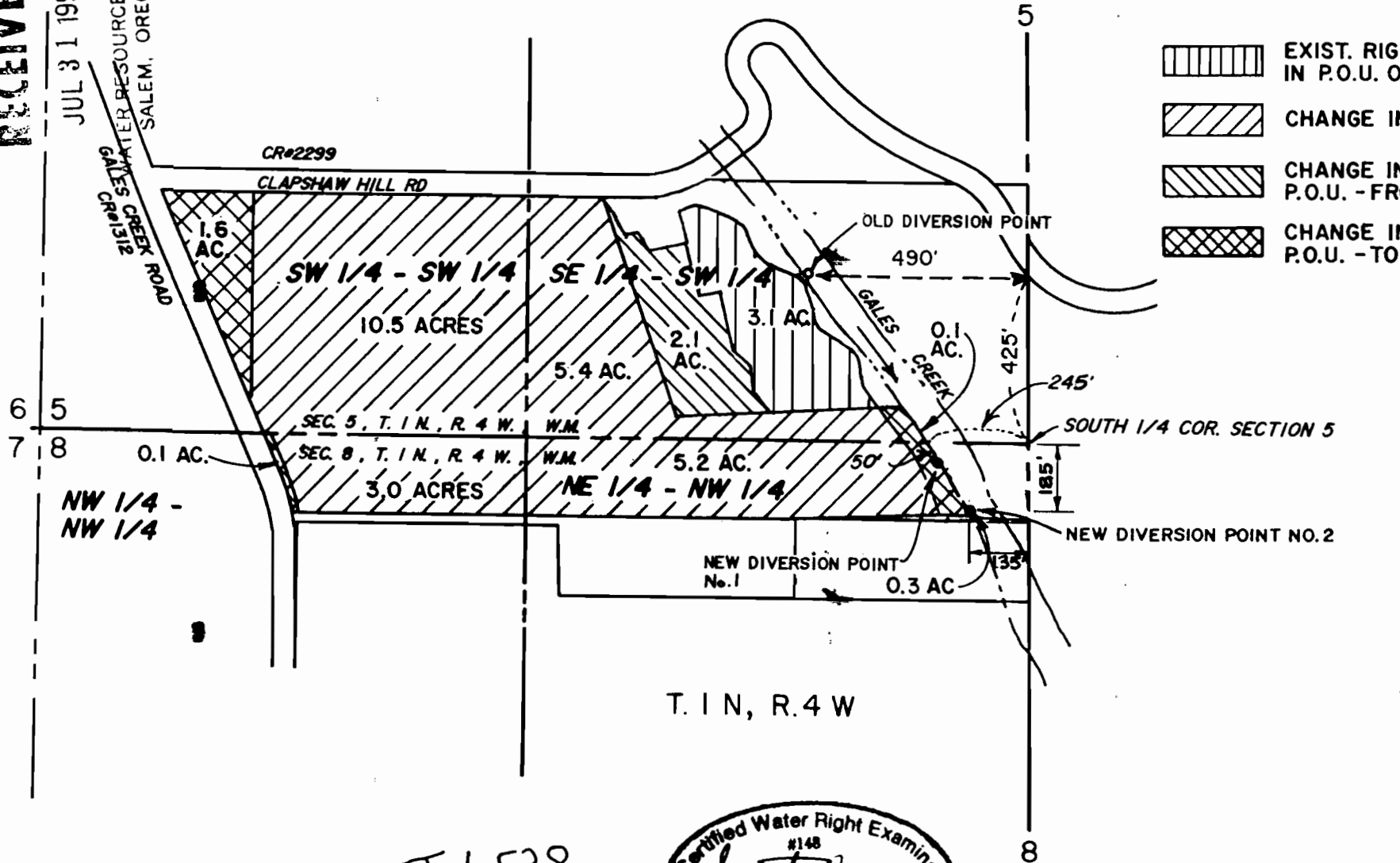






RECEIVED

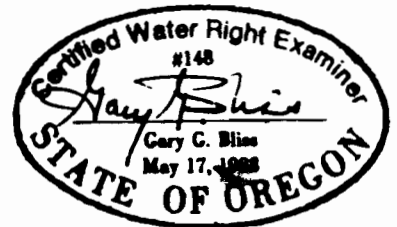
JUL 31 1992

WATER RESOURCES DEPT
SALEM, OREGON



-  EXIST. RIGHT NO CHANGE IN P.O.U. OR P.O.D.
-  CHANGE IN P.O.D.
-  CHANGE IN P.O.D. AND P.O.U. - FROM
-  CHANGE IN P.O.D. AND P.O.U. - TO

T-6538



SCALE: 1" = 400'

8-26-94 GGB/NLO
 8-24-92 RWC/NLO
 REVISED 7-22-92 RWC/NLO

WATER RIGHTS MAP FOR:

PAUL SANSONE

WAKER Associates inc.
 CIVIL ENGINEERING
 PLANNING • SURVEYING

11080 S.W. ALLEN BLVD., SUITE 100 / BEAVERTON, OREGON 97005 / 503.643.9410

DR'N: DGH
CR'D: TJB
APP'D: GGB
DATE: 2-28-91
SCALE: 1" = 400'
JOB No.: 09025