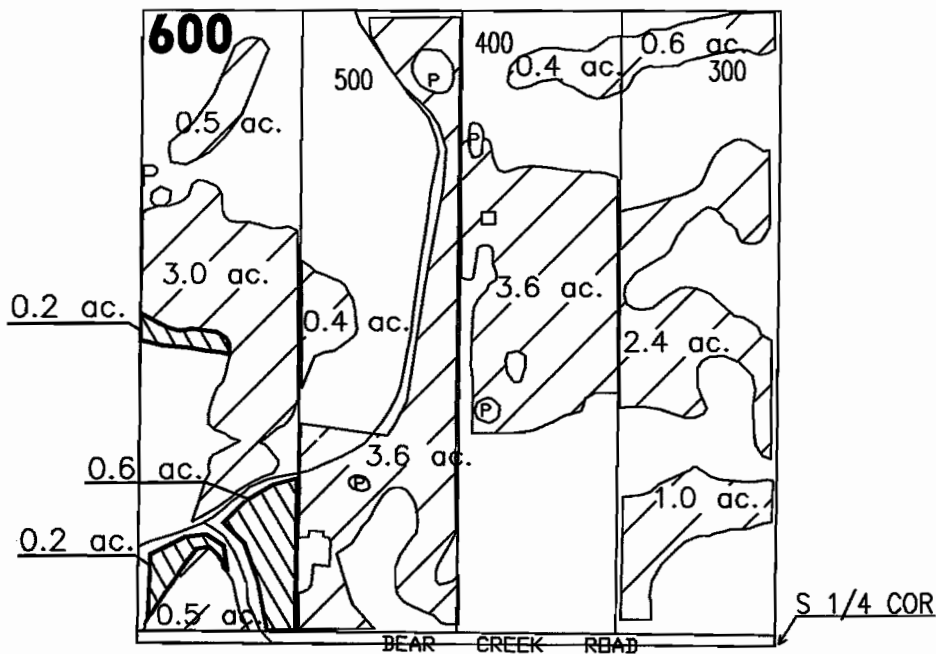


DESCHUTES COUNTY
SEC.34 T17S. R13E. W.M.

SCALE - 1" = 400'



SE 1/4 OF THE SW 1/4



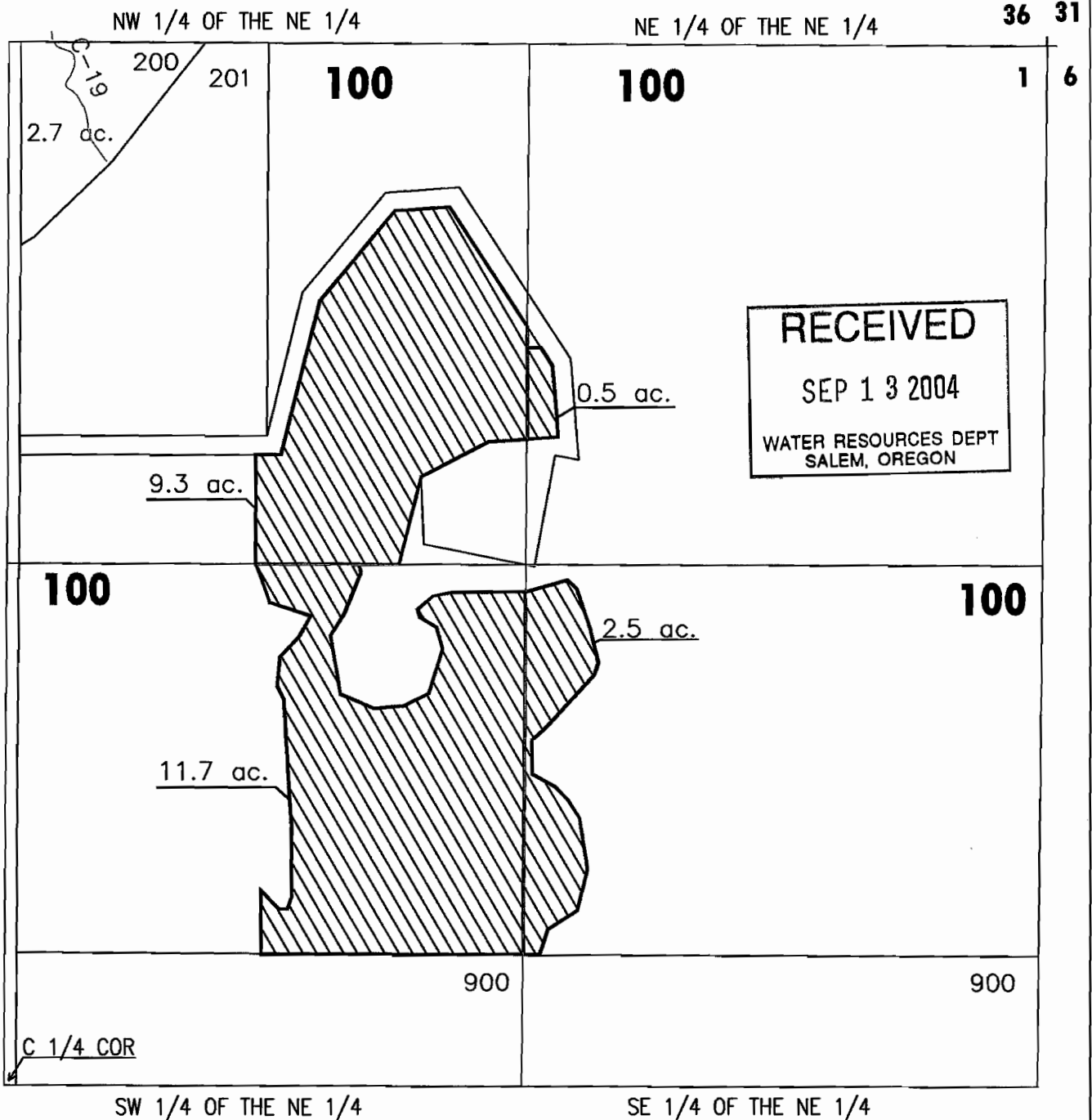
FINAL PROOF MAP

CHURCHILL MARA GROUP, INC. / STEPHAN G. SMART - 1.0 ACRES

RECEIVED
SEP 13 2004
WATER RESOURCES DEPT
SALEM, OREGON

DESCHUTES COUNTY
SEC.08 T18S. R13E. W.M.

SCALE - 1" = 400'



SW 1/4 OF THE NE 1/4

SE 1/4 OF THE NE 1/4

FINAL PROOF MAP
HARKEY-YOUNG INVESTMENTS / CURTIS BANEY - 24.0 ACRES

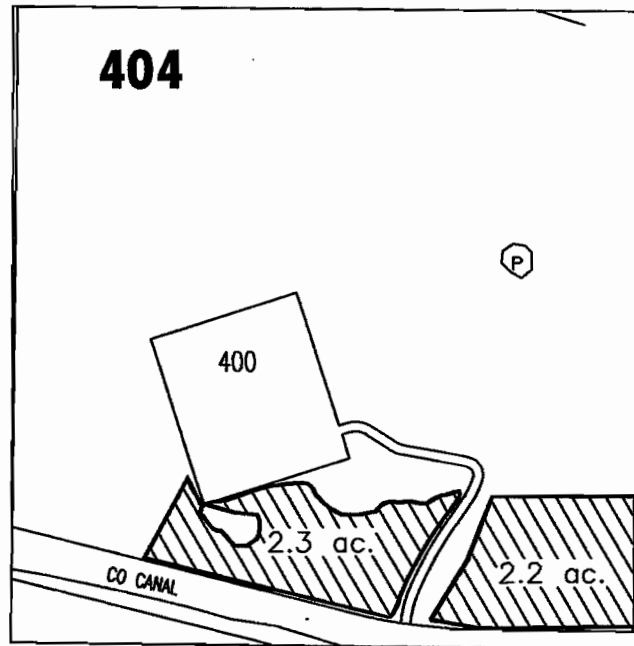
DESCHUTES COUNTY
SEC.11 T18S. R13E. W.M.

SCALE - 1" = 400'



NE 1/4 OF THE NW 1/4

N 1/4 COR



FINAL PROOF MAP

WILLIAM THOMAS / WILLIAM THOMAS - 4.5 ACRES

RECEIVED
SEP 13 2004
WATER RESOURCES DEPT
SALEM, OREGON