

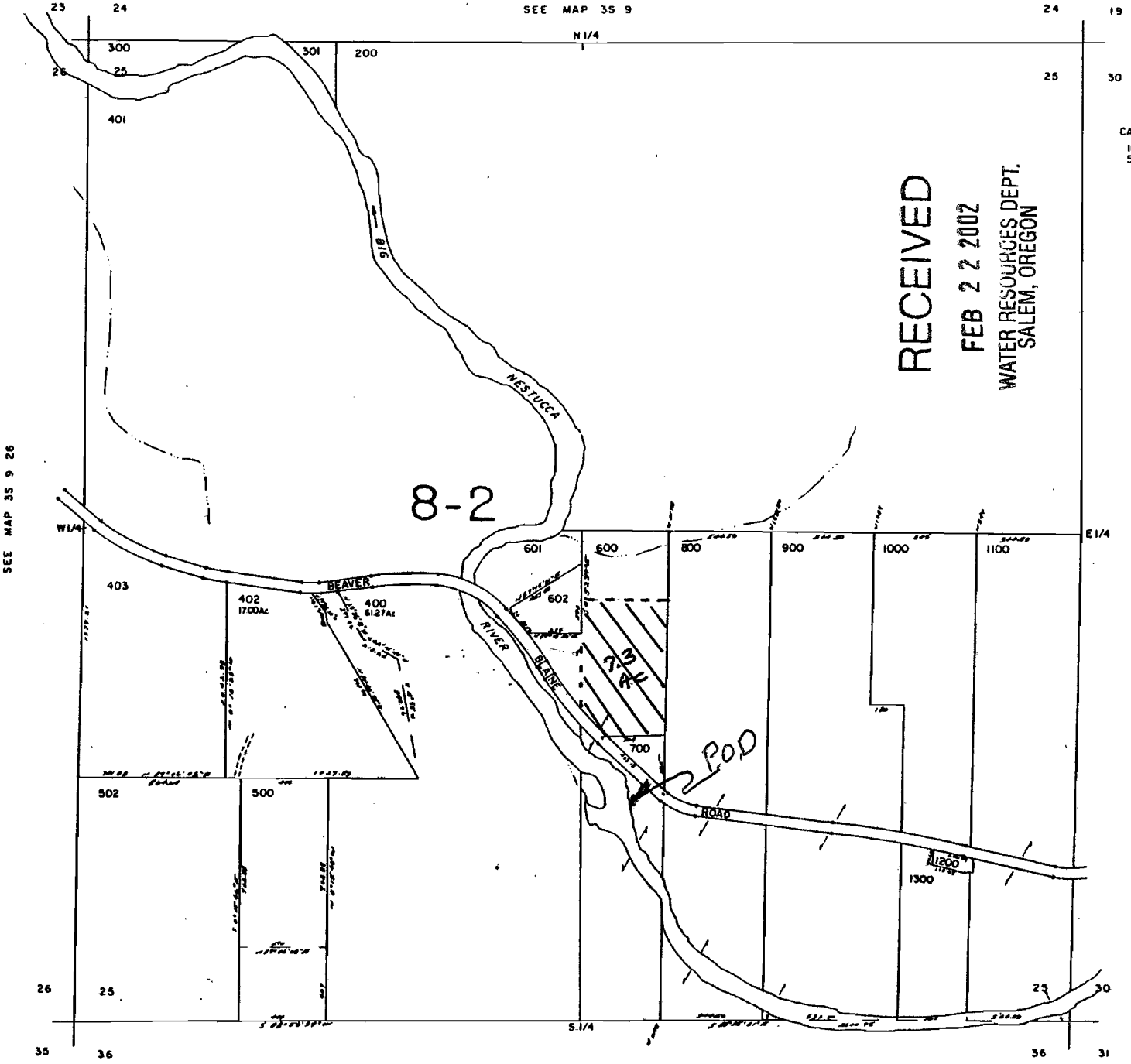
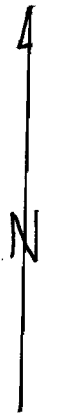
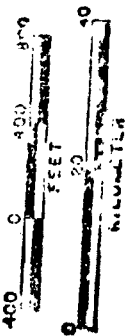
SECTION 25 T.35 S. R. 9 W. W.M
TILLAMOOK COUNTY

This map was prepared for purpose only.

35 8 25

1" = 400'

SCALE 1:9500



8-2

RECEIVED

FEB 22 2002

WATER RESOURCES DEPT.
SALEM, OREGON

CANCELLED
100
501

SEE MAP 35 9 26

SEE MAP 35 8 30

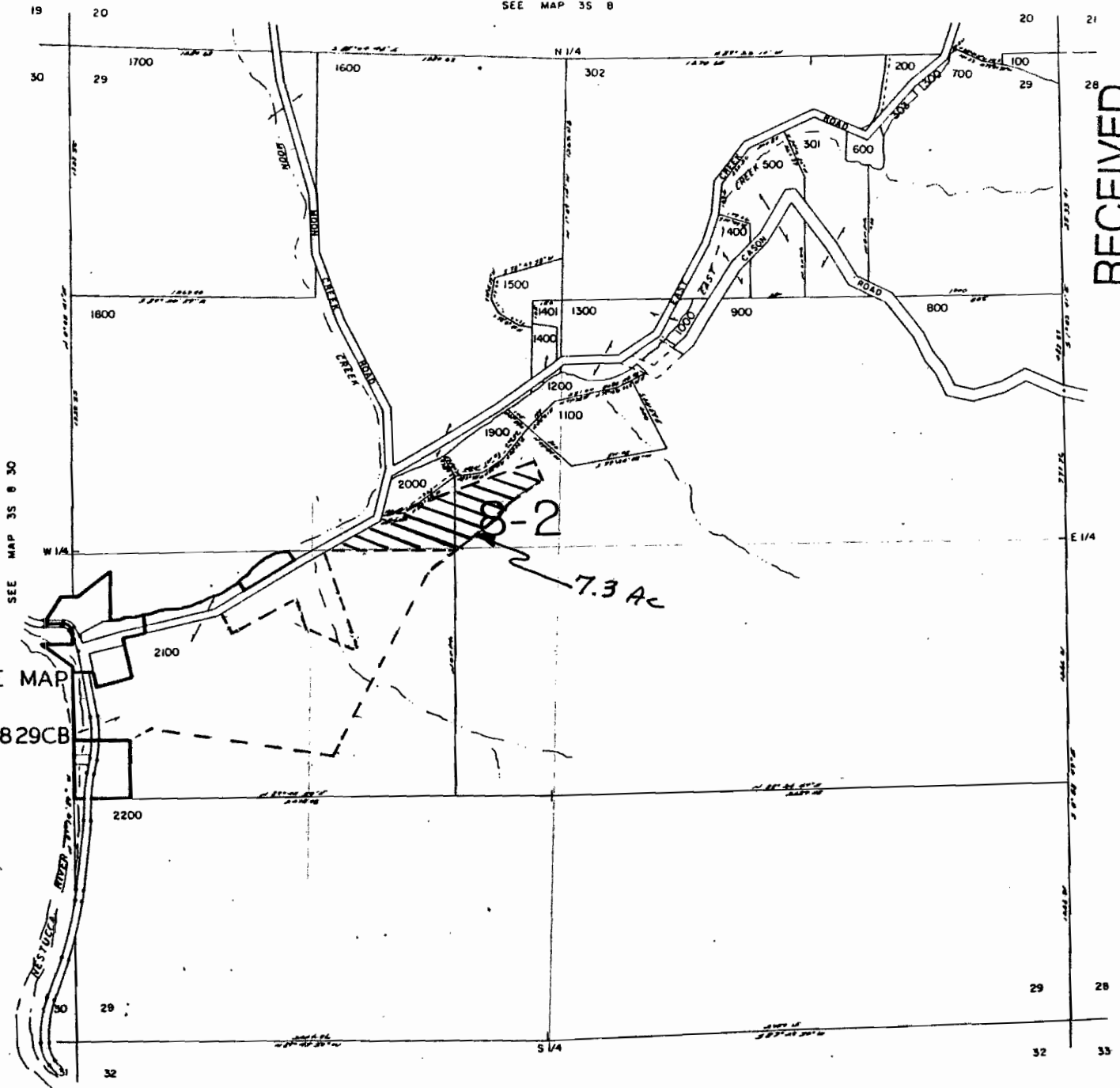
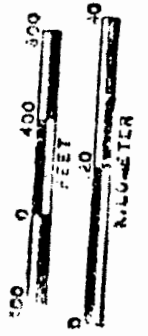
SEE MAP 35 9

SEE MAP 35 9

RECEIVED

T 9042

SCALE 1:9600



SEE MAP 35829CB

SEE MAP 35 B

RECEIVED

FEB 22 2002

WATER RESOURCES DEPT. SALEM, OREGON

SEE MAP 35 B

T 9042

RECEIVED AUG 09 1931 DEPT. OF LAND AND STATE OF OREGON

SURVEYORS CERTIFICATE

RECEIVED
MAR 10 1960
STATE ENGINEER
ANDERSON

W. E. Anderson of Tillamook, Oregon do hereby certify that this map was made from notes taken during an actual survey made by me in February 1960 and that it correctly represents the works herein.

W. E. Anderson

