

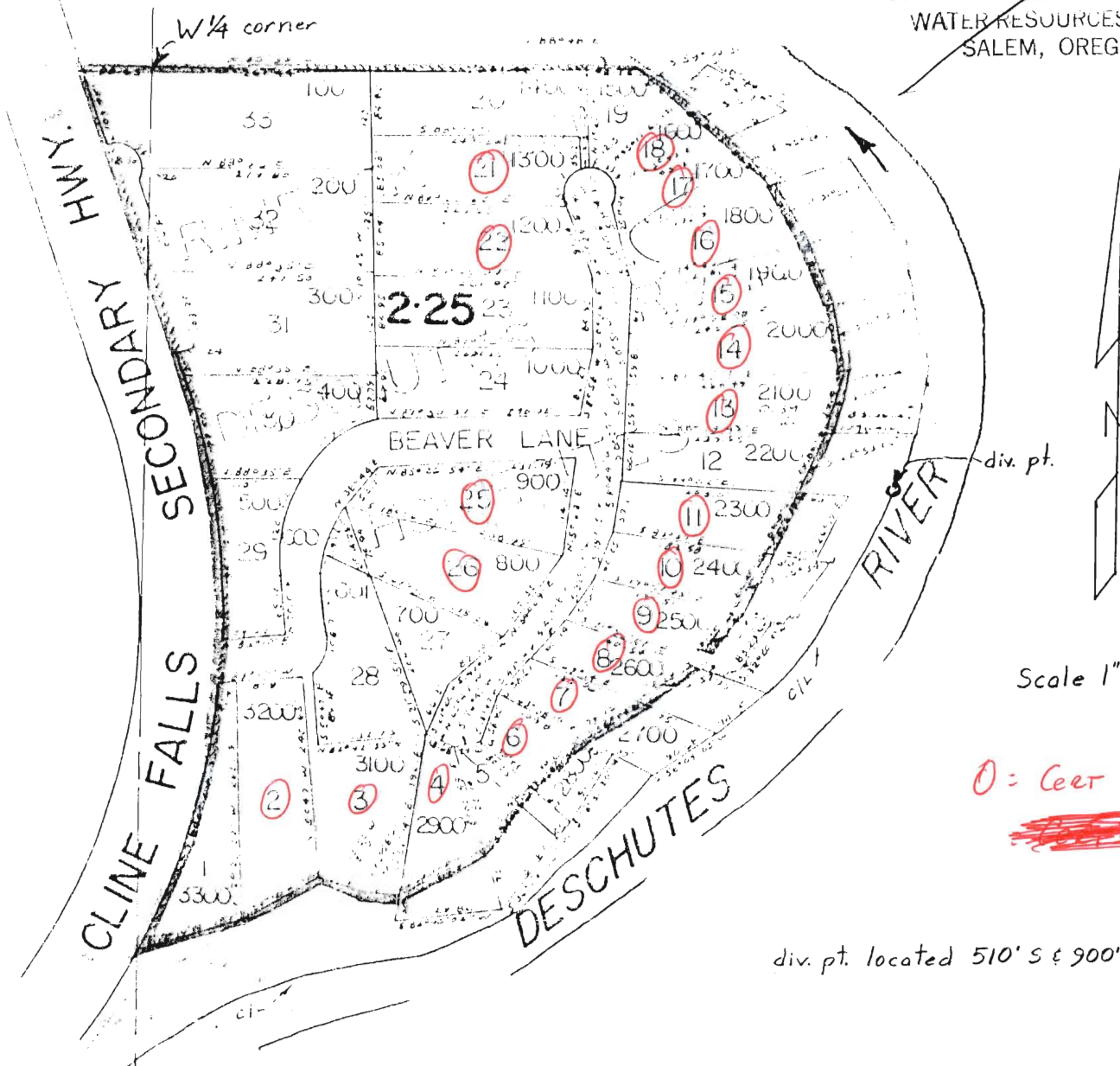
T-6821

NW1/4 SW1/4 SEC. 29 T.16S. R.12E.W.M.

RECEIVED

SEP - 8 1992

WATER RESOURCES DEPT.
SALEM, OREGON



Scale 1" = 200'

0 = Cert 45382

div. pt. located 510' S & 900' E from W1/4 cor.

Transfer Application Map
for
RIMROCK WATER IMPROVEMENT DIST.

