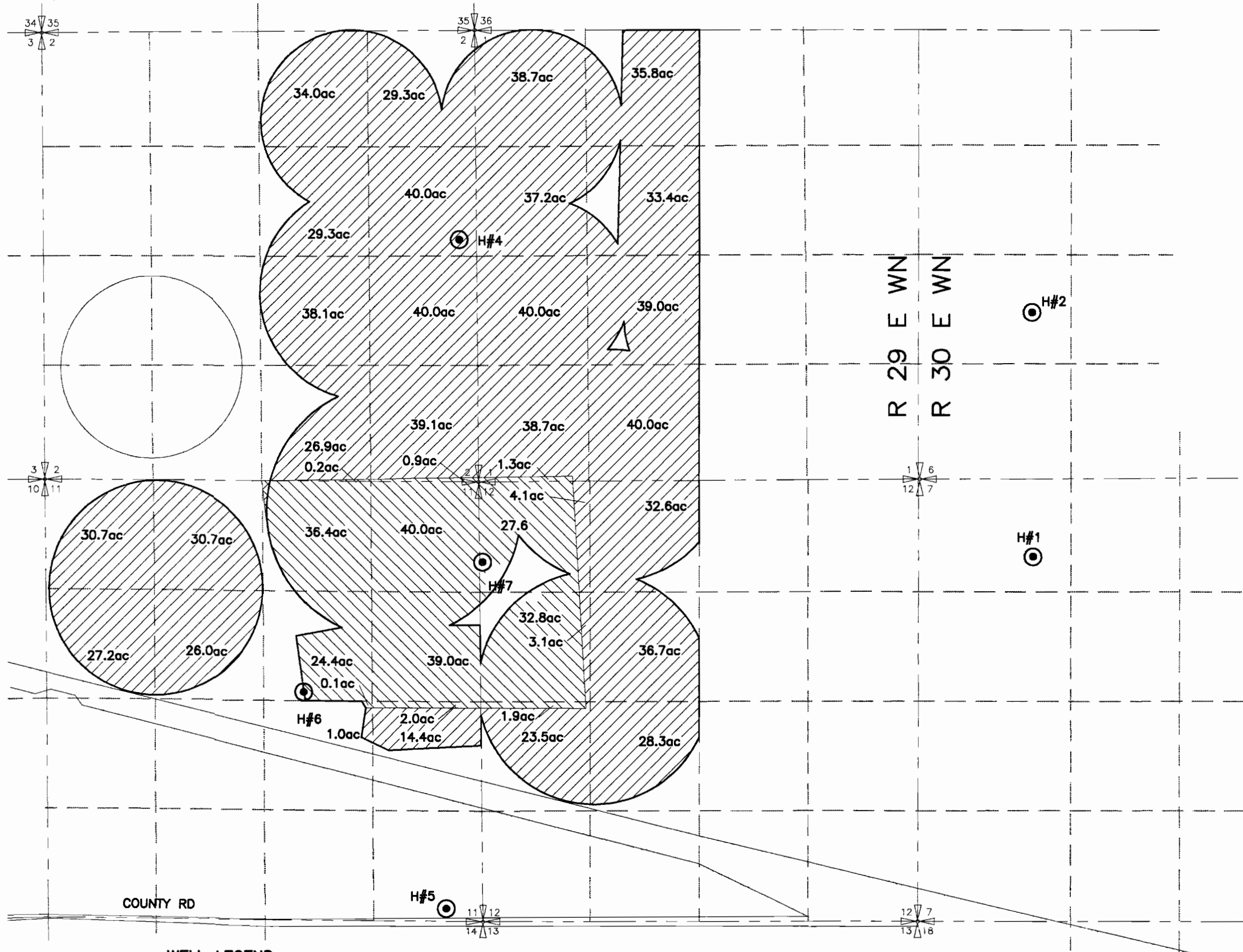


T3N, R29E WM
 AMENDED APPLICATION TRANSFER MAP T-6775 PERMIT G-5215
 CERTIFICATE 56165 NORTH OF I-84



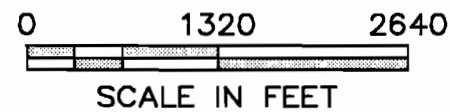
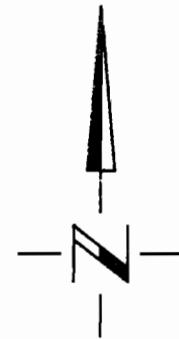
WELL LEGEND

AUTHORIZED POINTS OF APPROPRIATION

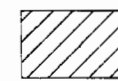
- HALE NO ① 4340'N + 1830'W FROM S1/4 COR, SEC 7 T3N R 30E W.M.
- HALE NO ② 2010'N + 1330'E FROM SW COR, SEC 6 T3N R 30E W.M.
- HALE NO ④ 180'N + 260'W FROM E1/4 COR, SEC 2 T3N R 29E W.M.
- HALE NO ⑥ 132'N + 2190'W FROM E1/4 COR, SEC 11 T3N R 29E W.M.
- HALE NO ⑦ 1010'S + 40'E FROM NW COR, SEC 12 T3N R 29E W.M.

ADDITIONAL POINT OF APPROPRIATION

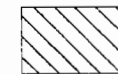
- HALE NO ⑤ 60'N + 590'W FROM SE COR, SEC 11 T3N R 29E W.M.



SUB-AREA "D" OF STAGE
 GULCH CRITICAL GROUND
 WATER AREA



PRIMARY IRRIGATION



SUPPLEMENTAL IRRIGATION

NOTE: THE PURPOSE OF THIS MAP IS TO IDENTIFY THE APPROXIMATE LOCATION OF THE WATER RIGHT. IT IS NOT INTENDED TO PROVIDE INFORMATION RELATIVE TO THE LOCATION OF PROPERTY OWNERSHIP BOUNDARY LINES.