

JUNE 2001
 AMENDED TRANSFER
 T-6777
 KENNY COPPINGER
 T3N, R29 AND 30E WM

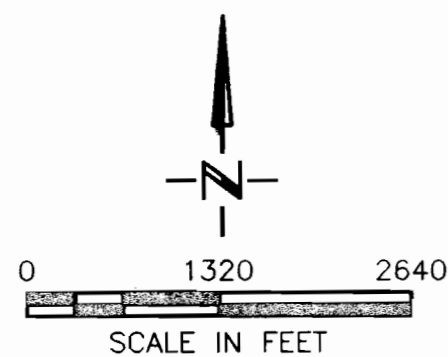
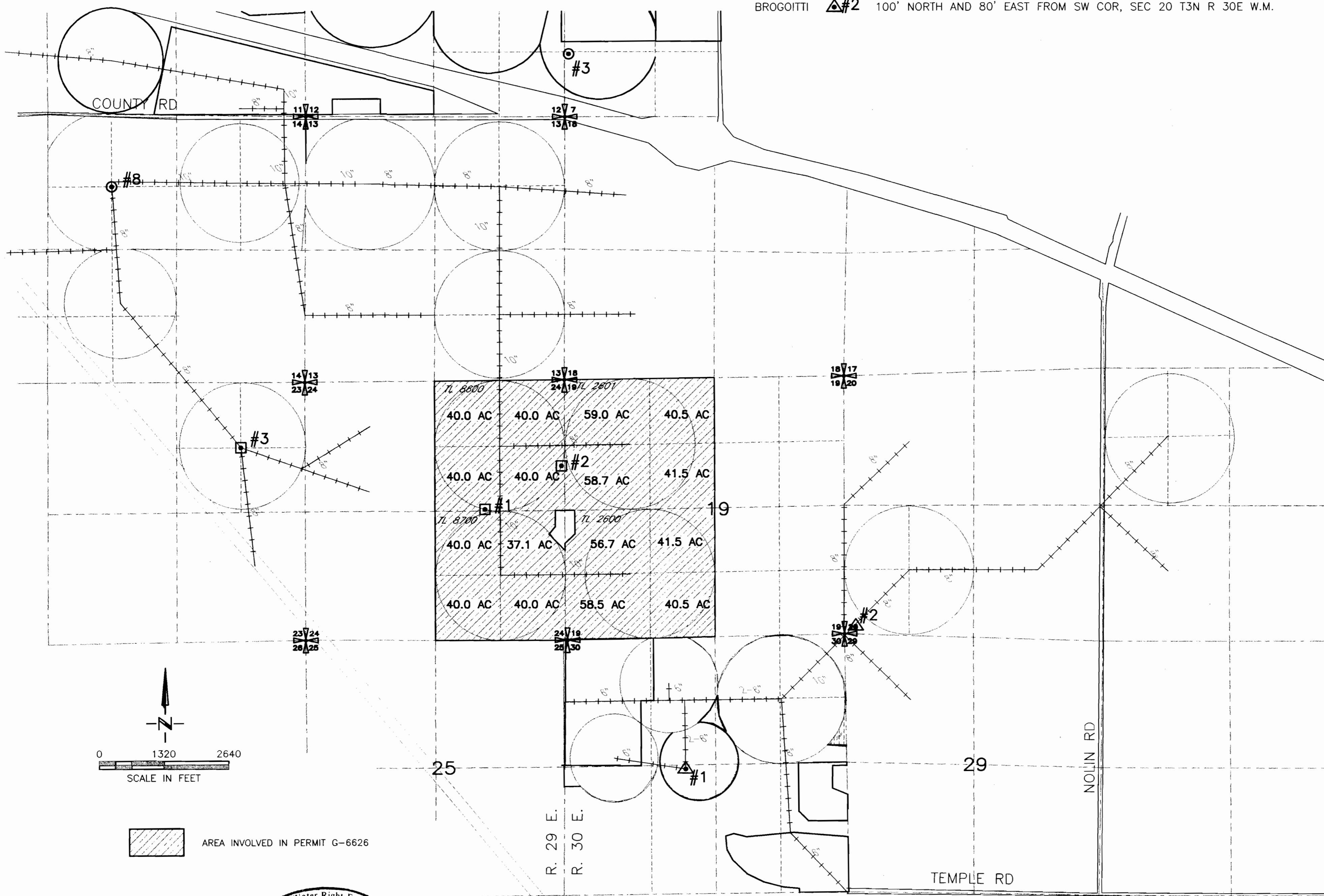
WELL LEGEND

AUTHORIZED POINTS OF APPROPRIATION

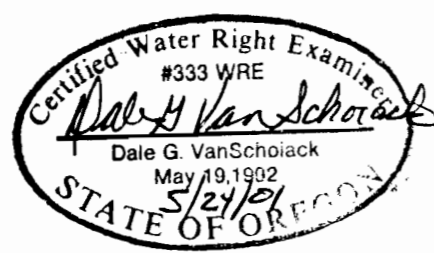
- COPPINGER □#1 20' NORTH AND 1570' WEST FROM E1/4 COR, SEC 24 T3N R 29E W.M.
 COPPINGER □#2 960' NORTH AND 30' WEST FROM E1/4 COR, SEC 24 T3N R 29E W.M.

ADDITIONAL POINTS OF APPROPRIATION

- COPPINGER □#3 3960' NORTH AND 1320' WEST FROM SE COR, SEC 23 T3N R 29E W.M.
 HALE ○#3 1220' NORTH AND 40' EAST FROM SW COR, SEC 7 T3N R 30E W.M.
 HALE ○#8 1320' NORTH AND 1320' WEST FROM CENTER, SEC 14 T3N R 29E W.M.
 BROGOITTI ▲#1 30' SOUTH AND 640' WEST FROM CENTER, SEC 30 T3N R 30E W.M.
 BROGOITTI ▲#2 100' NORTH AND 80' EAST FROM SW COR, SEC 20 T3N R 30E W.M.



AREA INVOLVED IN PERMIT G-6626



5/25/01
 3522.032
 3522ECH2.DWG