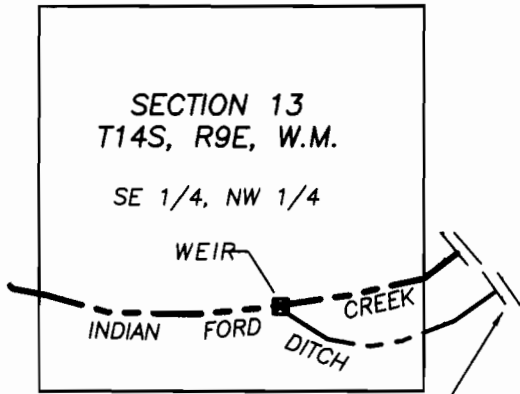


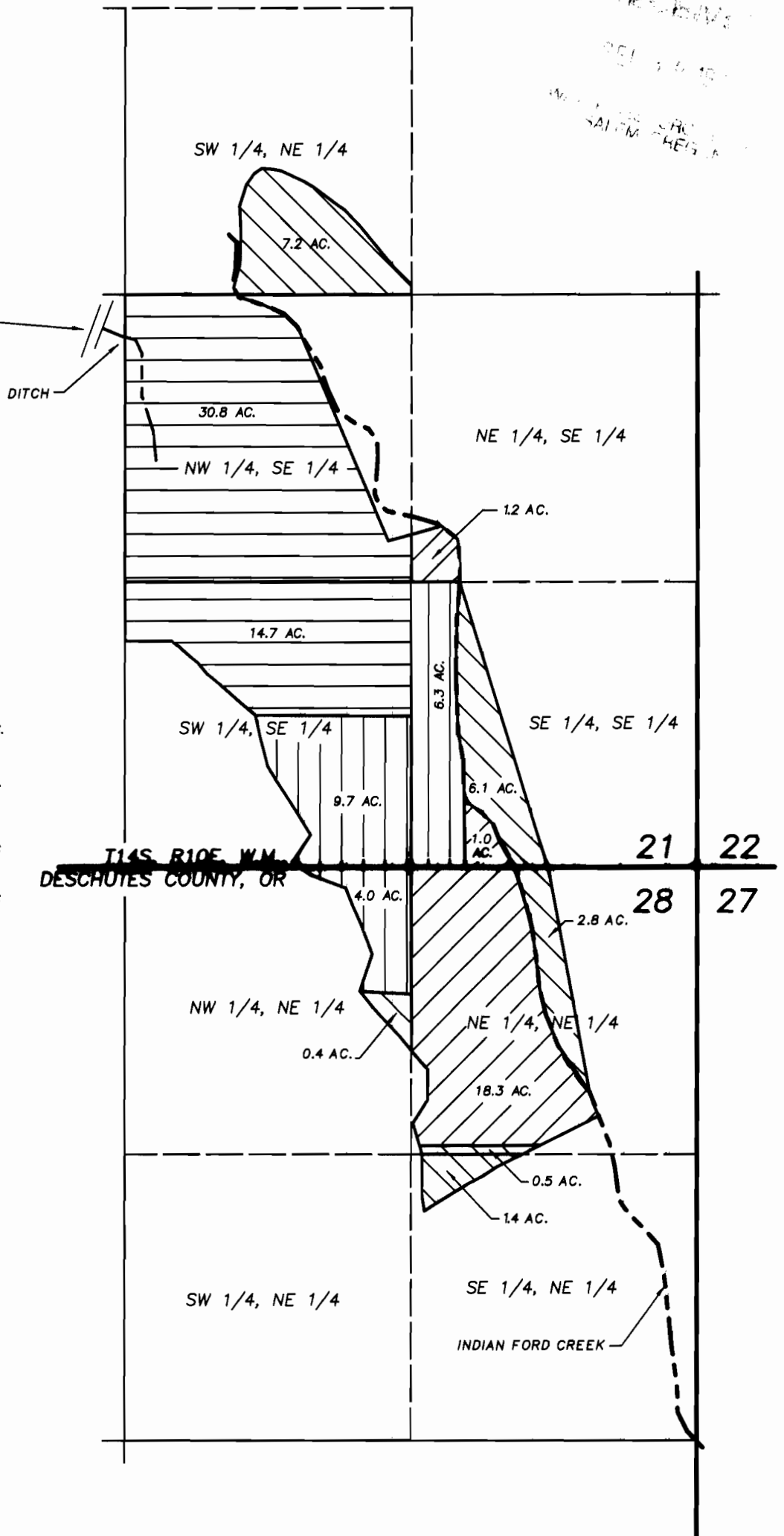
POINT OF DIVERSION

SE 1/4, NW 1/4, SEC. 13, T14S, R9E, W.M.,
2350 FEET SOUTH AND 2150 EAST FROM
THE NW CORNER OF SECTION 13.

THIS MAP IS FOR THE PURPOSE OF IDENTIFYING THE LOCATION OF THE WATER RIGHT.
IT IS NOT INTENDED TO PROVIDE LEGAL DIMENSIONS OR LOCATIONS OF PROPERTY
OWNERSHIP LINES.



THE DISTANCE ALONG THE
DITCH FROM POINT OF
DIVERSION TO PLACE OF
USE IS 3.8 MILES.



LEGEND

"1871"		CERT. # 14762 0.91 CFS - 45.5 AC.
"1882"		CERT. # 274 0.46 CFS - 20.0 AC.
"1903"		CERT. # 14762 0.81 CFS - 20.5 AC.
"1905"		CERT. # 292 0.82 CFS - 18.4 AC.



9-22-99

FINAL PROOF SURVEY

THE WILLOWS RANCH
WATER RIGHTS TRANSFER
T-6615

JAMES AND JUDITH KNAPP

