

Map for: RAYMOND C. KAUER

Location: The SE 1/4 of the SE 1/4 of Section 30, the NE 1/4 of the NE 1/4 of Section 31, the NE 1/4, SE 1/4 and SW 1/4 of the SW 1/4 and also the NE 1/4, NW 1/4, SE 1/4 and SW 1/4 of the SE 1/4 of Section 29, the NW 1/4 and SW 1/4 of the SW 1/4 of Section 28, the NW 1/4 of the NW 1/4 of Section 33, the NE 1/4 and NW 1/4 of the NW 1/4 and the NE 1/4 and NW 1/4 of the NE 1/4 of Section 32, T.4 S., R.4 W., W.M., Part of the E. Ford D.L.C. 73, E. Edison D.L.C. 68 and W. J. Rodgers D.L.C. 74, Yamhill County, Oregon.

LEGEND:

- · - · - · - = Property line
- — — — — = D.L.C. line
- — — — — = Section line
- — — — — = "40" line

DIVERSION POINTS FROM NE CORNER OF SECTION 6, T.5 S., R.4 W., W.M.

- No. 1 1610' South & 470' West
- No. 2 1610' South & 570' West

North

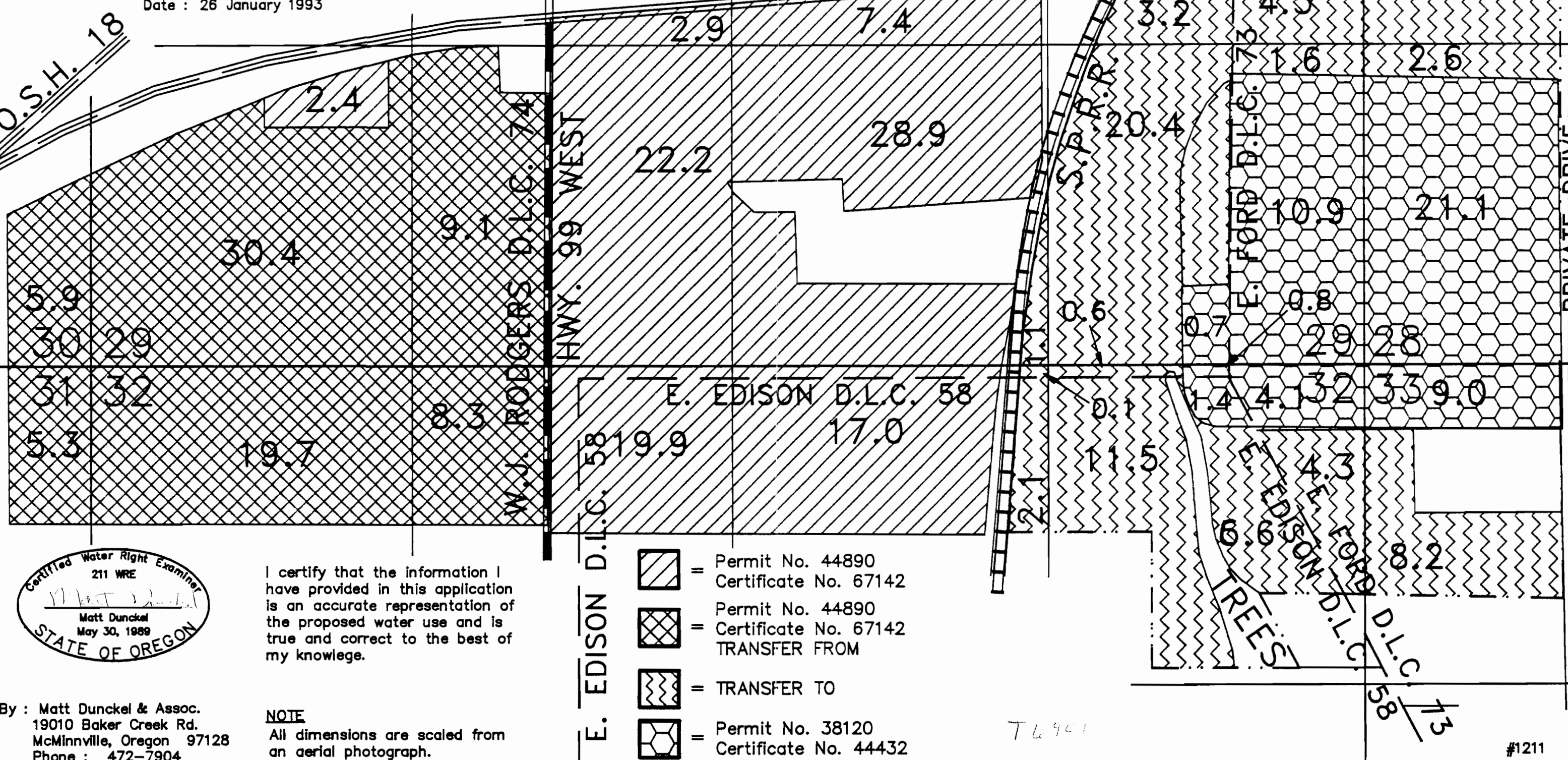
Scale : 1" = 400'

Application No.

Date : 26 January 1993

O.S.H. 18

MCMINNVILLE BYPASS



I certify that the information I have provided in this application is an accurate representation of the proposed water use and is true and correct to the best of my knowledge.

NOTE

All dimensions are scaled from an aerial photograph.

- = Permit No. 44890 Certificate No. 67142
- = Permit No. 44890 Certificate No. 67142 TRANSFER FROM
- = TRANSFER TO
- = Permit No. 38120 Certificate No. 44432

By : Matt Dunckel & Assoc.
19010 Baker Creek Rd.
McMinnville, Oregon 97128
Phone : 472-7904

T 6901