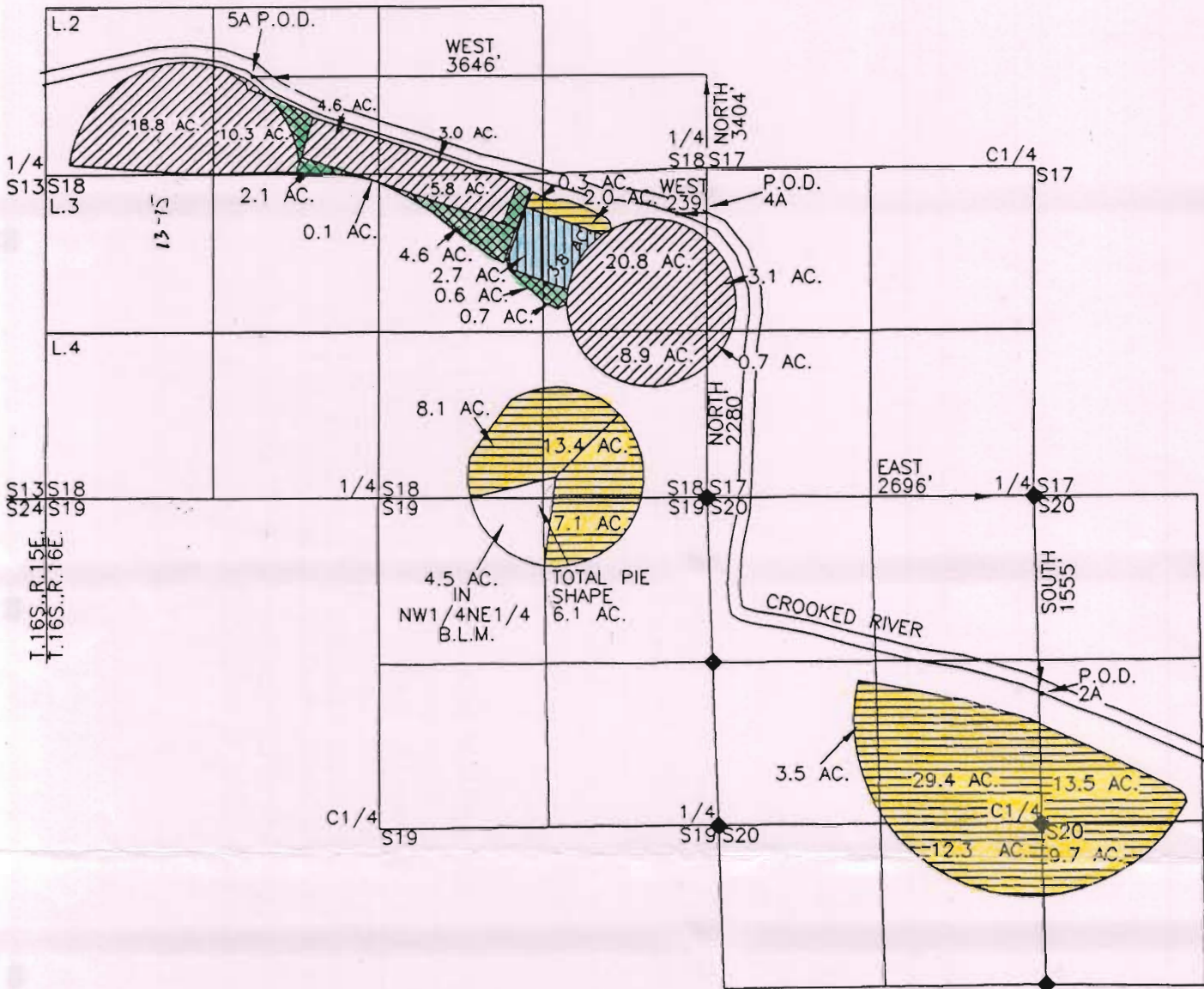


MAY 20 2004

RECEIVED



PREPARED FOR
QUAIL VALLEY RANCH II, L.L.C.
2250 MCGILCHRIST ST., SE
SUITE 200
SALEM, OR 97302
BRUCE THORN, ATTORNEY
(503) 370-7071 EXT. 7143

PREPARED BY
ARMSTRONG SURVEYING
& ENGINEERING, INC.
378 NE SECOND STREET
PRINEVILLE, OR 97754
(541) 447-7791

SCALE
1" = 1320'

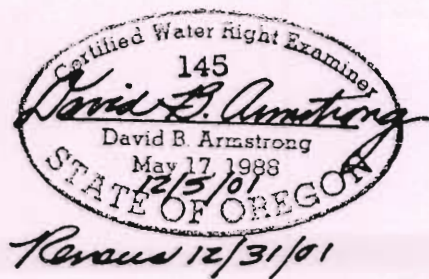


MARCH 29, 2001
REVISED DEC. 5, 2001

WATER ON

LEGEND

- ◆ BRASS CAP MONUMENT AS PER B.L.M. SURVEY PERFORMED 1984 - 85.
- PRIMARY C.52182 - PRIORITY 1893
SUPPLEMENTAL C. 75633 - PRIORITY 1914
- PRIMARY C.52182 - PRIORITY 1893
NO SUPPLEMENTAL
- PRIMARY C.68325 - PRIORITY 1891
SUPPLEMENTAL C.75633 - PRIORITY 1914
- PRIMARY C.75633 - PRIORITY 1914
- POINT OF DELIVERY



MAP NOTE

THE PREPARATION OF THIS MAP IS FOR THE PURPOSE OF IDENTIFYING THE LOCATION OF THE WATER RIGHT ONLY AND HAS NO INTENT TO PROVIDE DIMENSIONS OR LOCATIONS OF PROPERTY OWNERSHIP LINES.

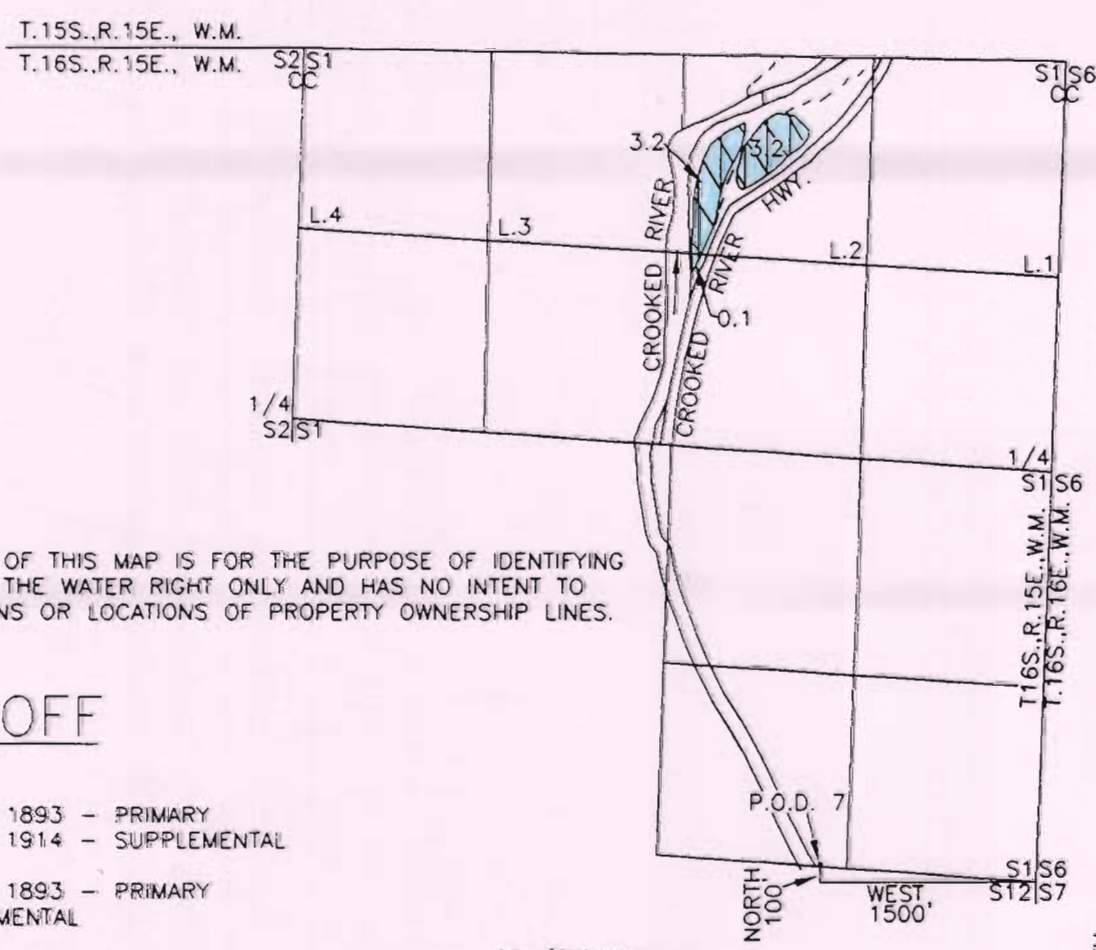
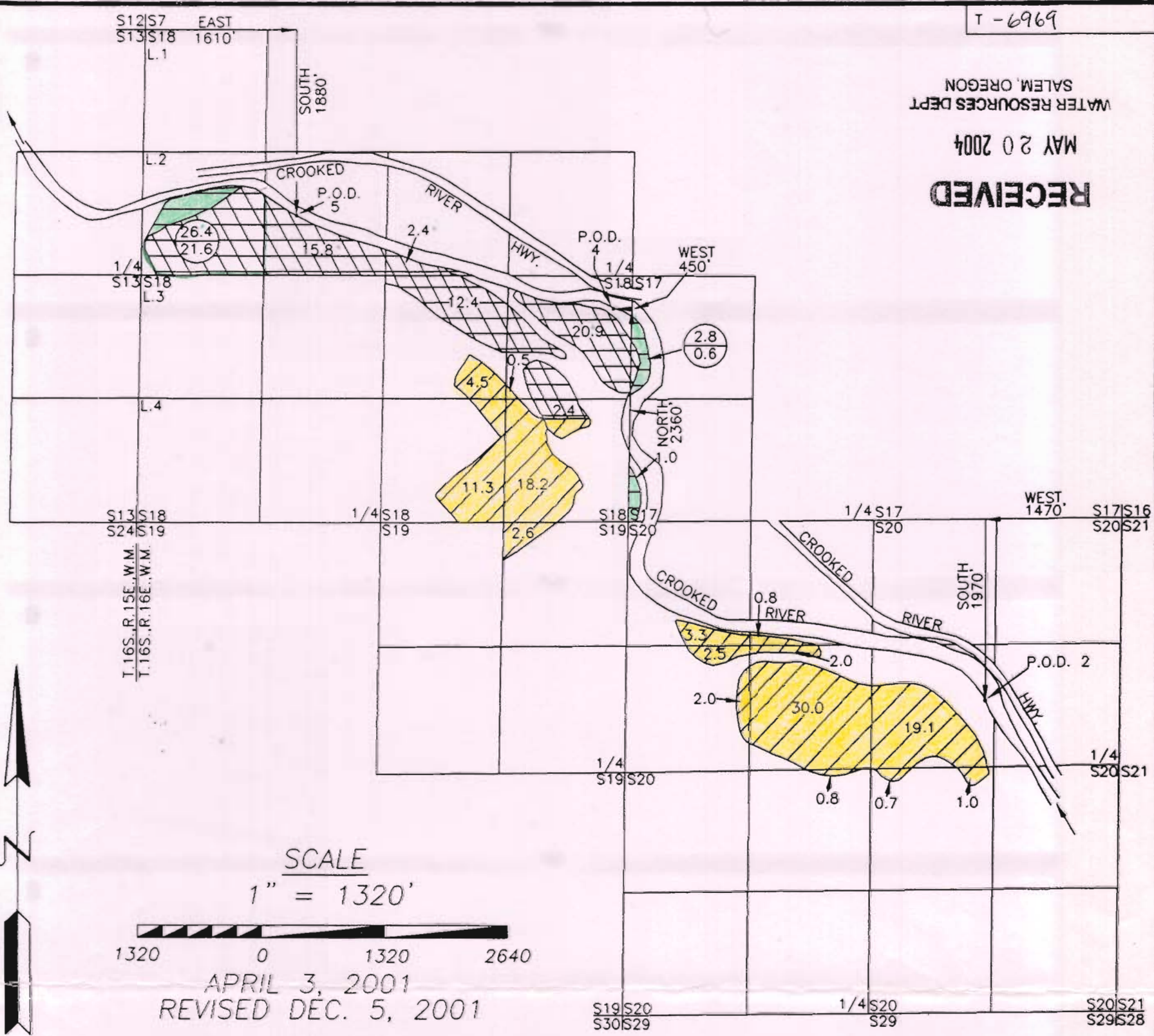
OFF map

T-6969

WATER RESOURCES DEPT
SALEM, OREGON

MAY 20 2004

RECEIVED

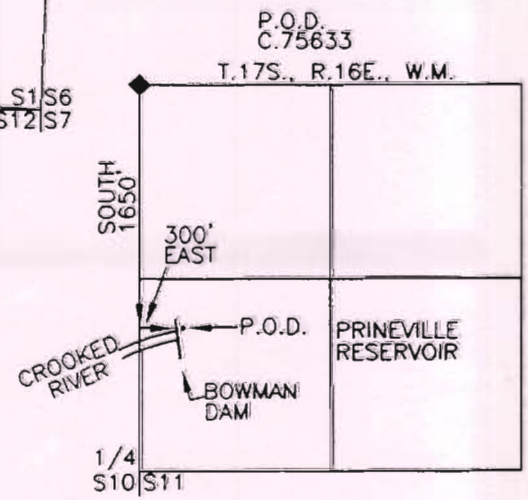


MAP NOTE
 THE PREPARATION OF THIS MAP IS FOR THE PURPOSE OF IDENTIFYING THE LOCATION OF THE WATER RIGHT ONLY AND HAS NO INTENT TO PROVIDE DIMENSIONS OR LOCATIONS OF PROPERTY OWNERSHIP LINES.

WATER OFF

- LEGEND**
- C.52182 - 1893 - PRIMARY
C.75633 - 1914 - SUPPLEMENTAL
 - C.52182 - 1893 - PRIMARY
NO SUPPLEMENTAL
 - C.75633 - 1914 - PRIMARY
NO SUPPLEMENTAL
 - C.68325 - 1891 - PRIMARY
C.75633 - 1914 - SUPPLEMENTAL
 - POINT OF DIVERSION
 - PRIMARY
 - SUPPLEMENTAL

David B. Armstrong
 145
 David B. Armstrong
 12/5/01
 Renewed 12/31/01



PREPARED FOR
 QUAIL VALLEY RANCH II, L.L.C.
 2250 MCGILCHRIST ST., SE
 SUITE 200
 SALEM, OR 97302
 BRUCE THORN, ATTORNEY
 (503) 370-7071 EXT. 7143

PREPARED BY
 ARMSTRONG SURVEYING
 & ENGINEERING, INC.
 378 NE SECOND STREET
 PRINEVILLE, OR 97754
 (541) 447-7791