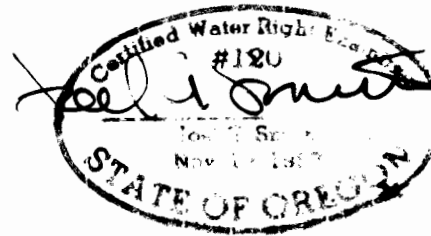


WATER RIGHTS TRANSFER MAP

FOR

FLOWERREE FARMS

WATER RIGHTS TRANSFERRED FROM
 SW 1/4 SECTION 25, T.26 SOUTH R.18 EAST
 AND
 SW 1/4, SW 1/4 SECTION 36, T.26 SOUTH, R.18 EAST
 TO
 NW 1/4, SW 1/4 SECTION 36, T.26 SOUTH R.19 EAST,
 LAKE COUNTY, OREGON



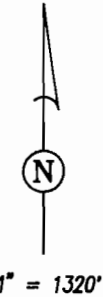
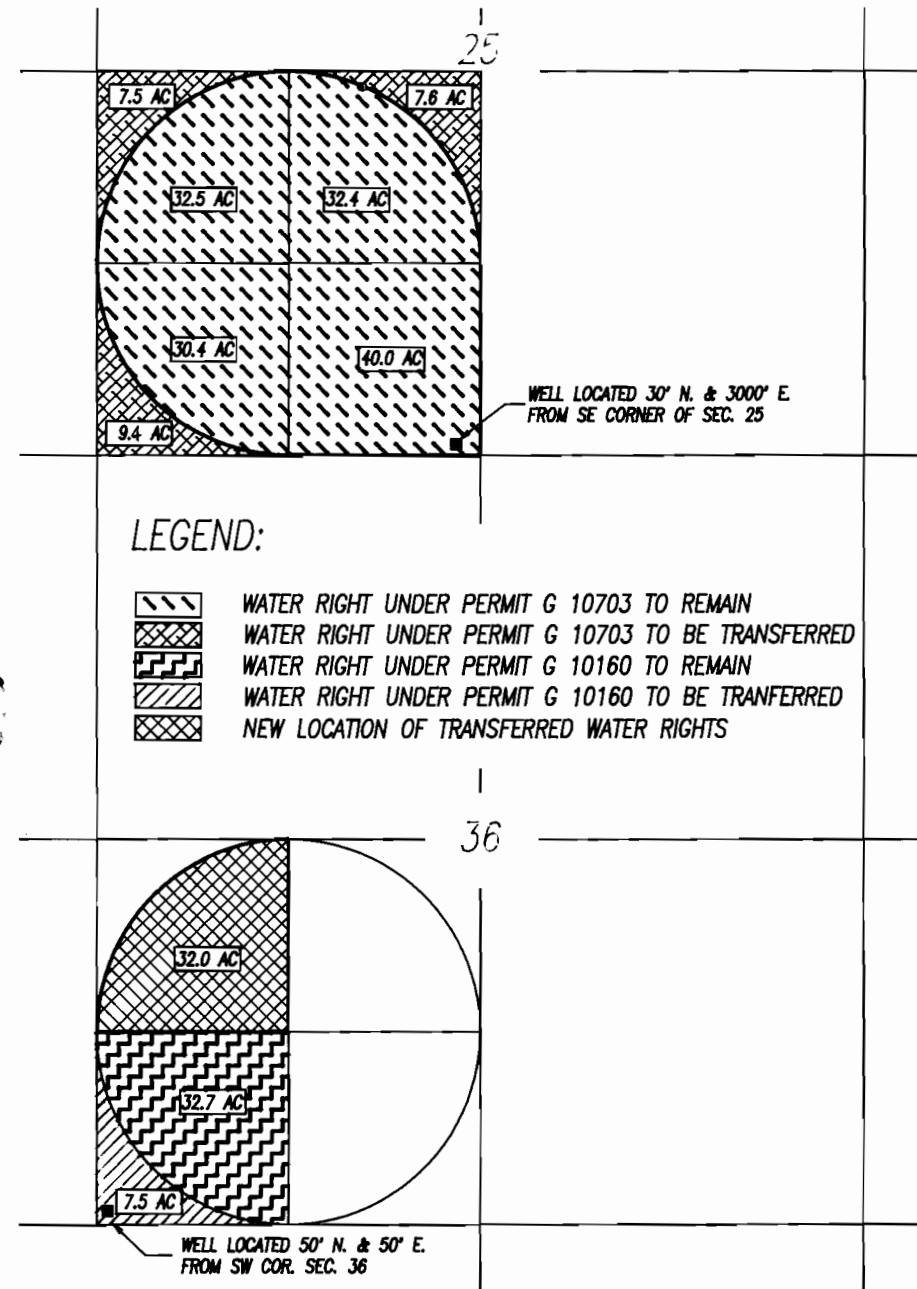
1/11/94

NOTE: This drawing has been prepared to identify the location of a water right and is not intended to be a survey of property ownership or boundary lines. Survey information from final proof survey G11030 AND G11201.

DRAWING NO.: F829-1
 DATE: 1/9/94



TERRASCOPE, INC.
 532 SW Seventh ST
 Redmond, OR 97756
 Tel: (503) 548-7854
 Fax: (503) 548-7854



1" = 1320'