

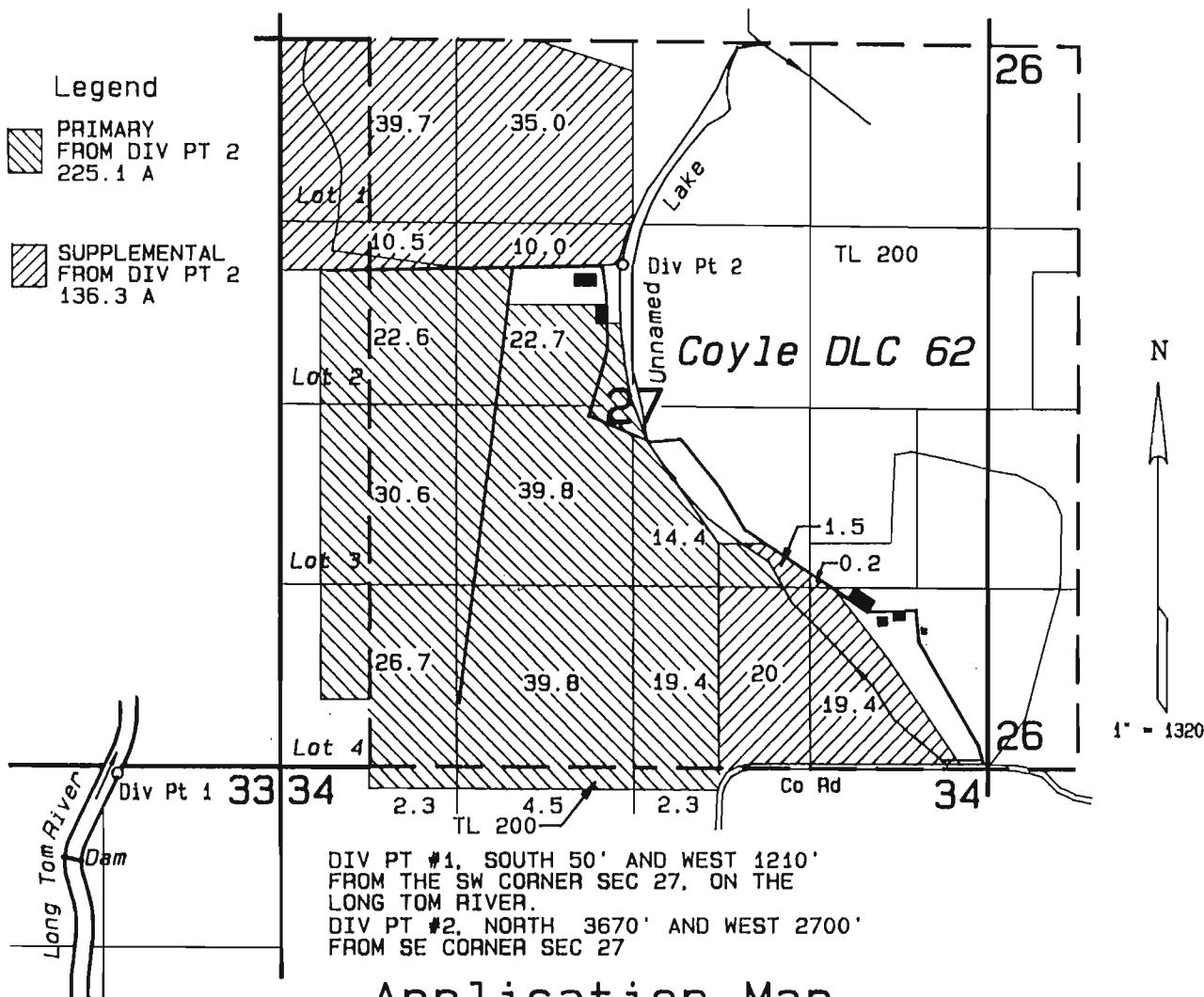
T-8104

RECEIVED

OCT 19 1998

WATER RESOURCES DEPT.
SALEM, OREGON

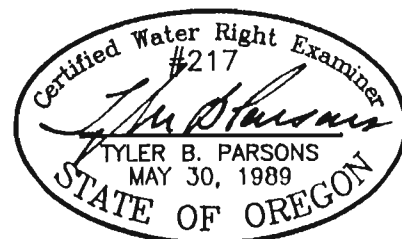
T14S, R5W, W.M.



DIV PT #1, SOUTH 50' AND WEST 1210'
FROM THE SW CORNER SEC 27, ON THE
LONG TOM RIVER.
DIV PT #2, NORTH 3670' AND WEST 2700'
FROM SE CORNER SEC 27

Application Map
FOR
Surface Water
Applications S-71790
IN THE NAME OF
C. M. HUBBARD & SON

Prepared Sep 15, 1997
PARSONS SURVEYING
1915 S.E. Stone St.
Corvallis, OR 97333
(541) 752-7515
Project No. 9102/9732Map2
This map is for location of Water Right
Application only and does not constitute
a boundary survey.



EXP: 12/31/98

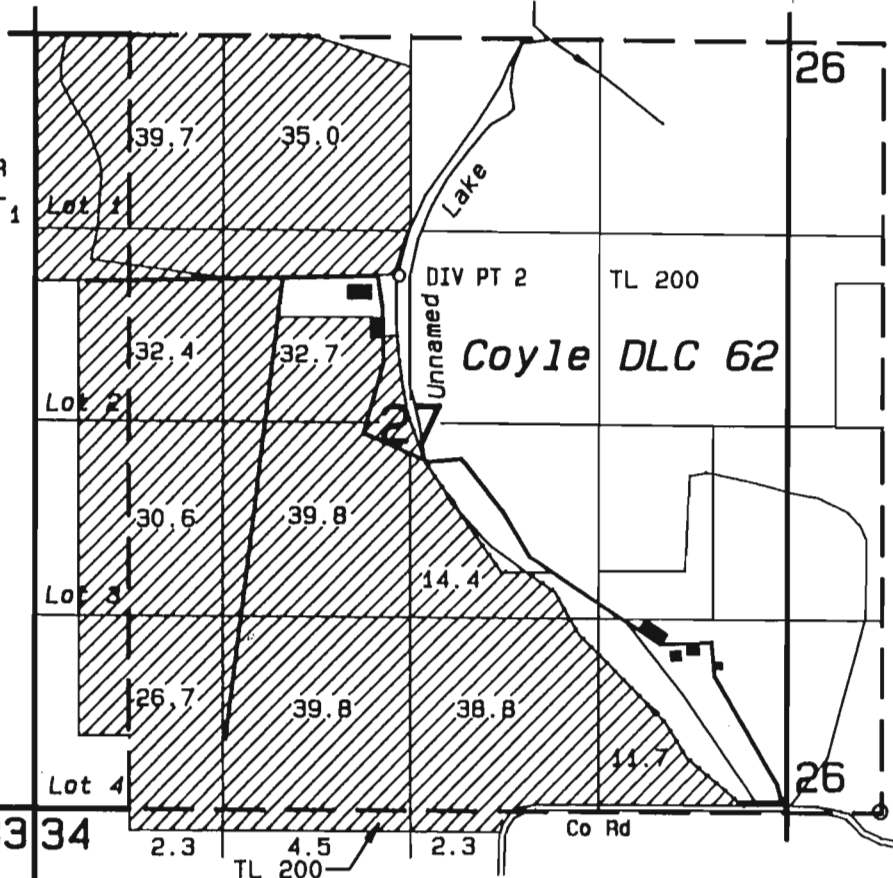
MAP 1 OF 2

OCT 19 1998

T14S, R5W, W.M. WATER RESOURCES DEPT. SALEM, OREGON

Legend

STORED WATER SUPPLEMENTAL FROM DIV PT 1 350.7 A



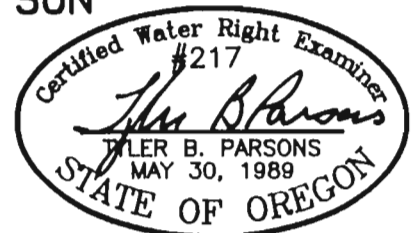
DIV PT #1, SOUTH 50' & WEST 1210'
 FROM THE SW CORNER SECTION 27, ON THE
 LONG TOM RIVER.
 DIV PT #2, NORTH 3670' & WEST 2700' FROM
 THE SE CORNER SECTION 27

Application Map
 FOR
 Stored Surface Water
 Application S-71790

IN THE NAME OF
C. M. HUBBARD & SON

Prepared Sep 15, 1997
 PARSONS SURVEYING
 1915 S.E. Stone St.
 Corvallis, OR 97333
 (541) 752-7515
 Project No. 9012/9732Map3

This map is for location of Water Right
 Application only and does not constitute
 a boundary survey.



EXP: 12/31/98