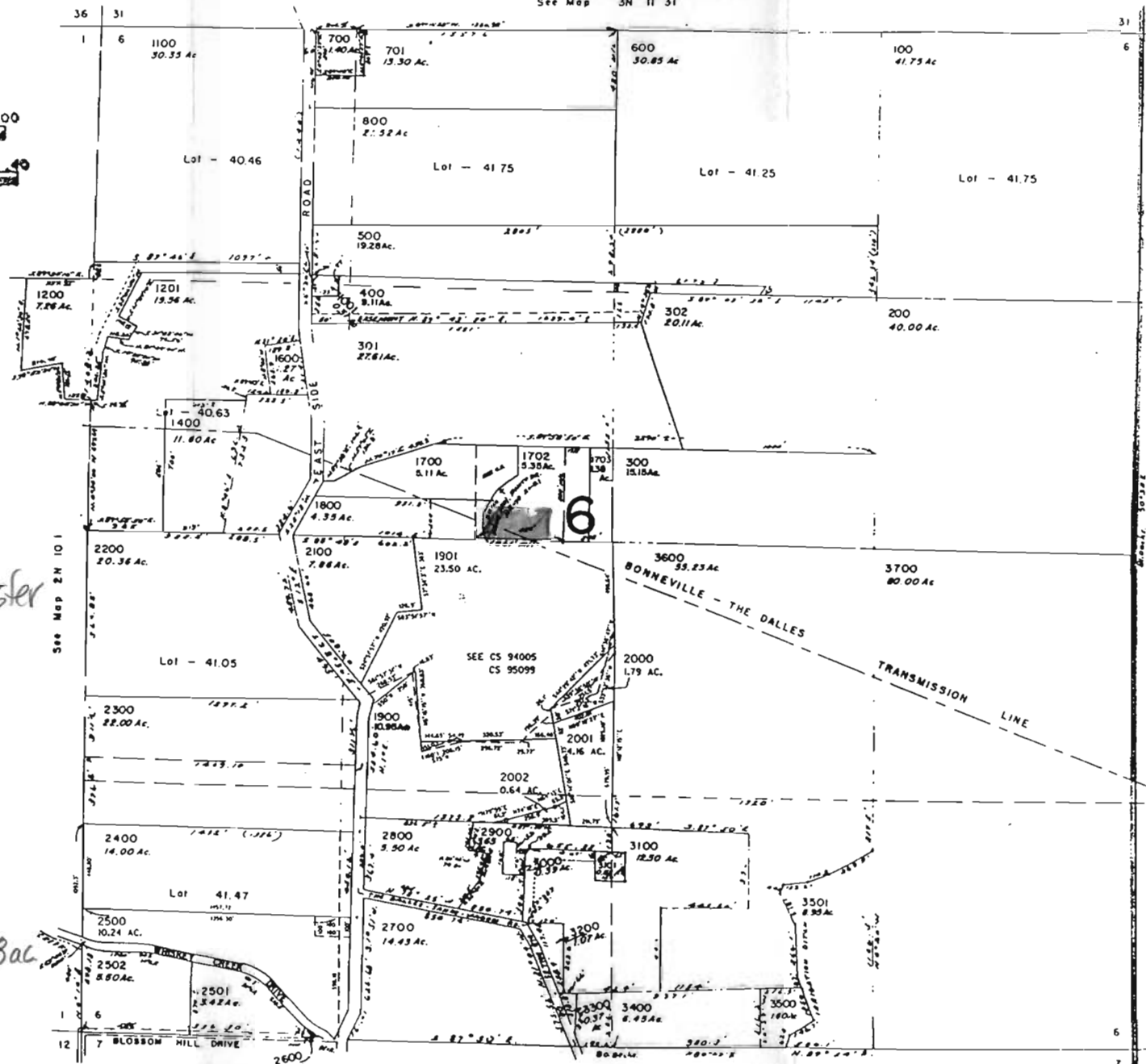
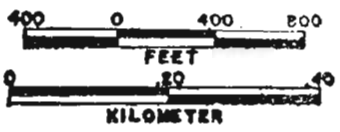


- 1902
- 1903
- 1701
- 1300
- 1500
- 1705
- 1704
- 900
- 1000
- 2503

SCALE 1:9600



Dills - District Transfer 8107

RECEIVED
SEP 30 1996
DEPT. OF REVENUE
STATE OF OREGON

1895 water right 1.08 ac

RECEIVED

SEP 28 2000

WATER RESOURCES DEPT.
SALEM, OREGON

2N 11 6