

37-2W-16B/2100

1" = 200'



RECEIVED

MAY 24 1996

WATER RESOURCES DEPT.
SALEM, OREGON

PURTZER, THOMAS & REGINA

RECEIVED

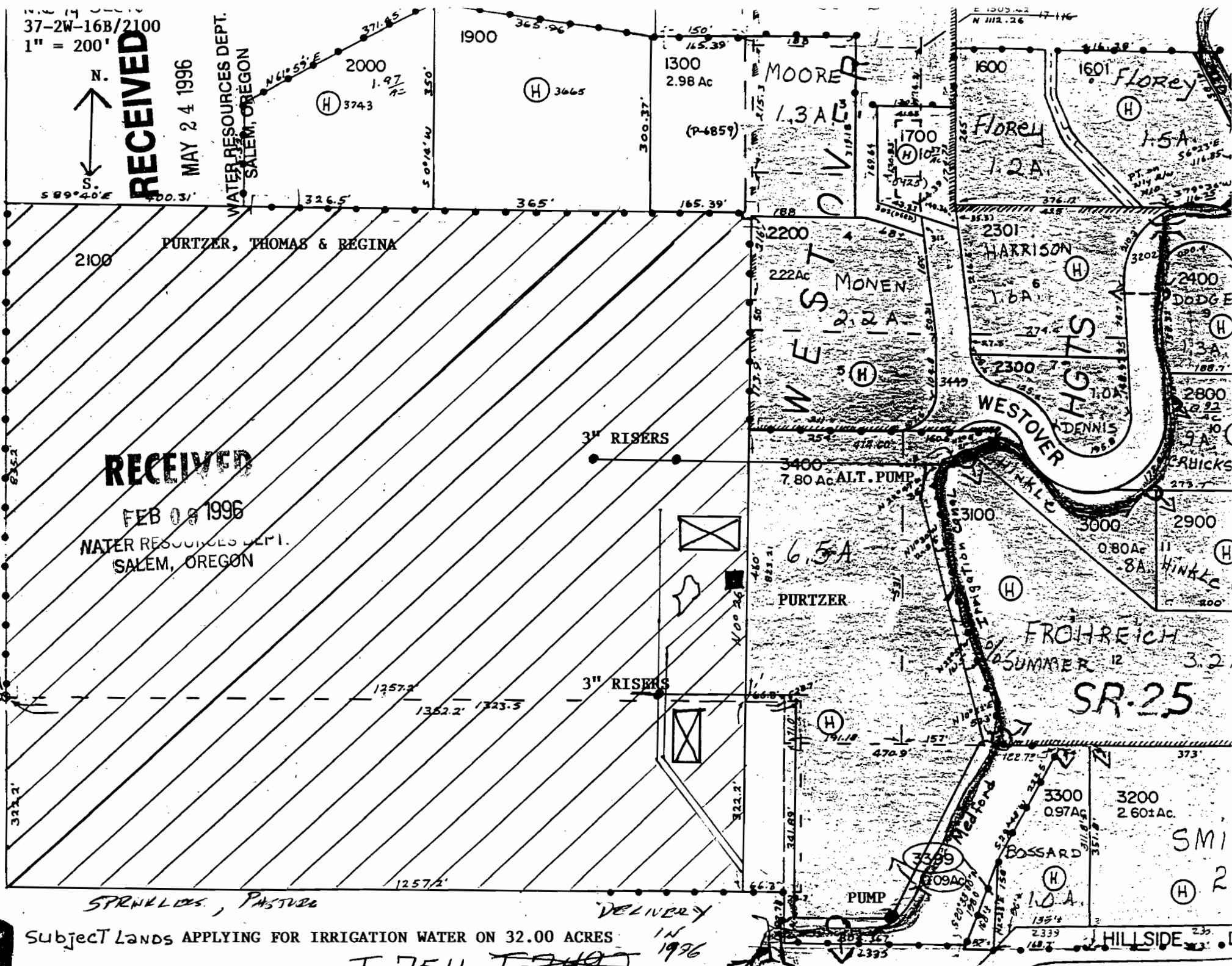
FEB 08 1996

WATER RESOURCES DEPT.
SALEM, OREGON

SPRINKLERS, PASTURE

Subject Lands APPLYING FOR IRRIGATION WATER ON 32.00 ACRES

T-7511 T-7492 1996



TO:

1/4
Cov.

SMI
R
(H)

SR-25

FROHREICH
SUMMER 12

HINKLE
8A
(H)

WESTOVER
DENNIS
(H)

PURTZER
6.5A
(H)

WESTON
MONEN
2.2A
(H)

FLOREY
1.2A
(H)

FLOREY
1.5A
(H)

MOORE
1.3A
(P-6859)

(H) 3743
2000
1.97
Ac

(H) 3665
1900

2100

(H) 3743

1300
2.98 Ac

1600

1601

2200
222Ac

2301
HARRISON
1.6A
(H)

2400
DODGE
(H)

2300

2800
(H)

3400
7.80 Ac ALT. PUMP

2900

0.80Ac
8A
(H)

3100

3000

3200
2.60±Ac

3300
0.97Ac

3200
2.60±Ac

PUMP

BOSSARD
1.0A
(H)

HILLSIDE
2.35
(H)

ROGUE RIVER VALLEY
IRRIGATION DISTRICT
OFFICE

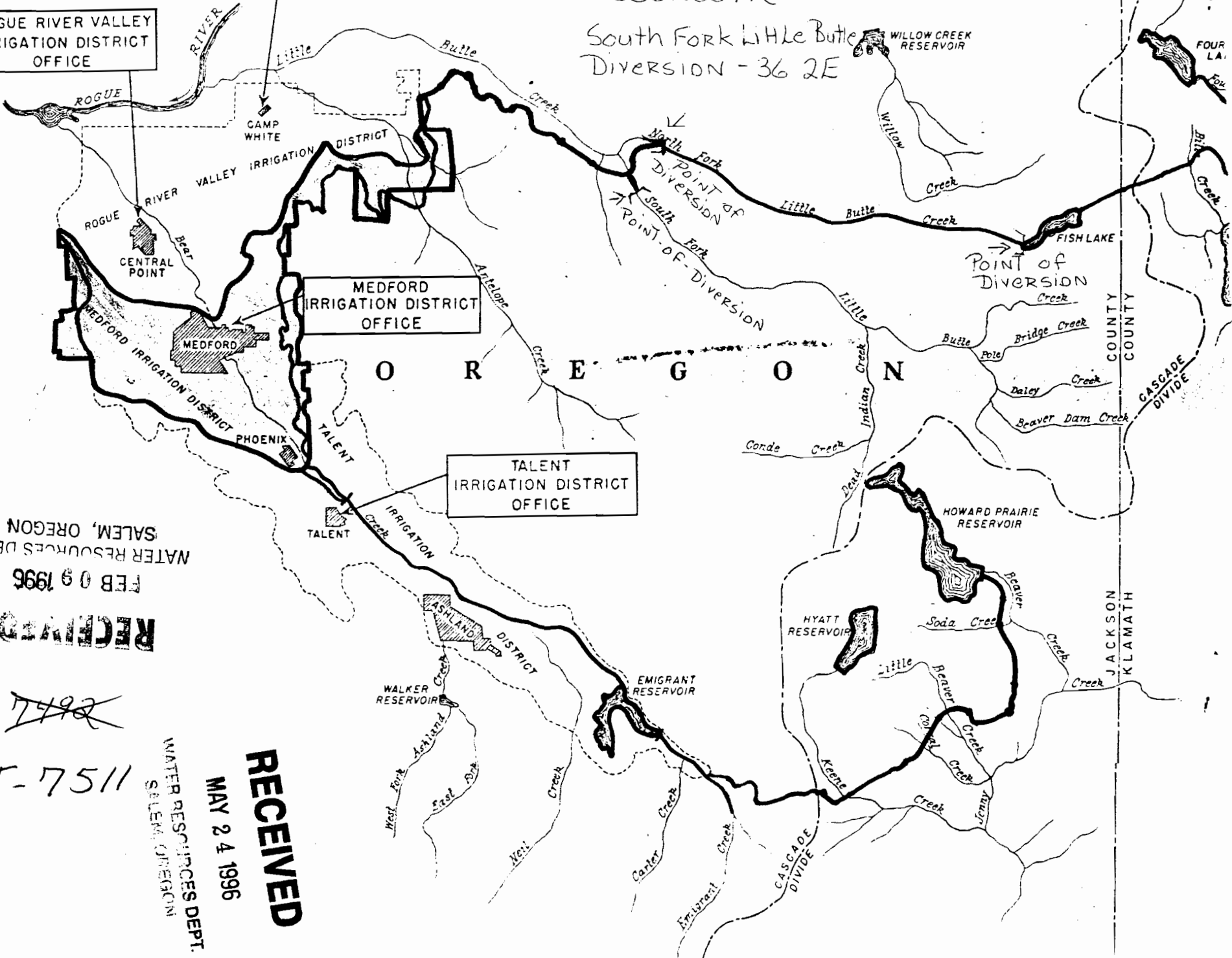
HEADQUARTERS

Fish Lake - 37 4E
Reservoir

South Fork Little Butte
Diversions - 36 2E

WILLOW CREEK
RESERVOIR

FOUR
LA.



WATER RESOURCES DEPT.
SALEM, OREGON

FEB 09 1996

RECEIVED

T-7492

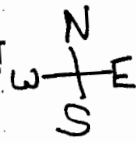
T-7511

WATER RESOURCES DEPT.
SALEM, OREGON

MAY 24 1996

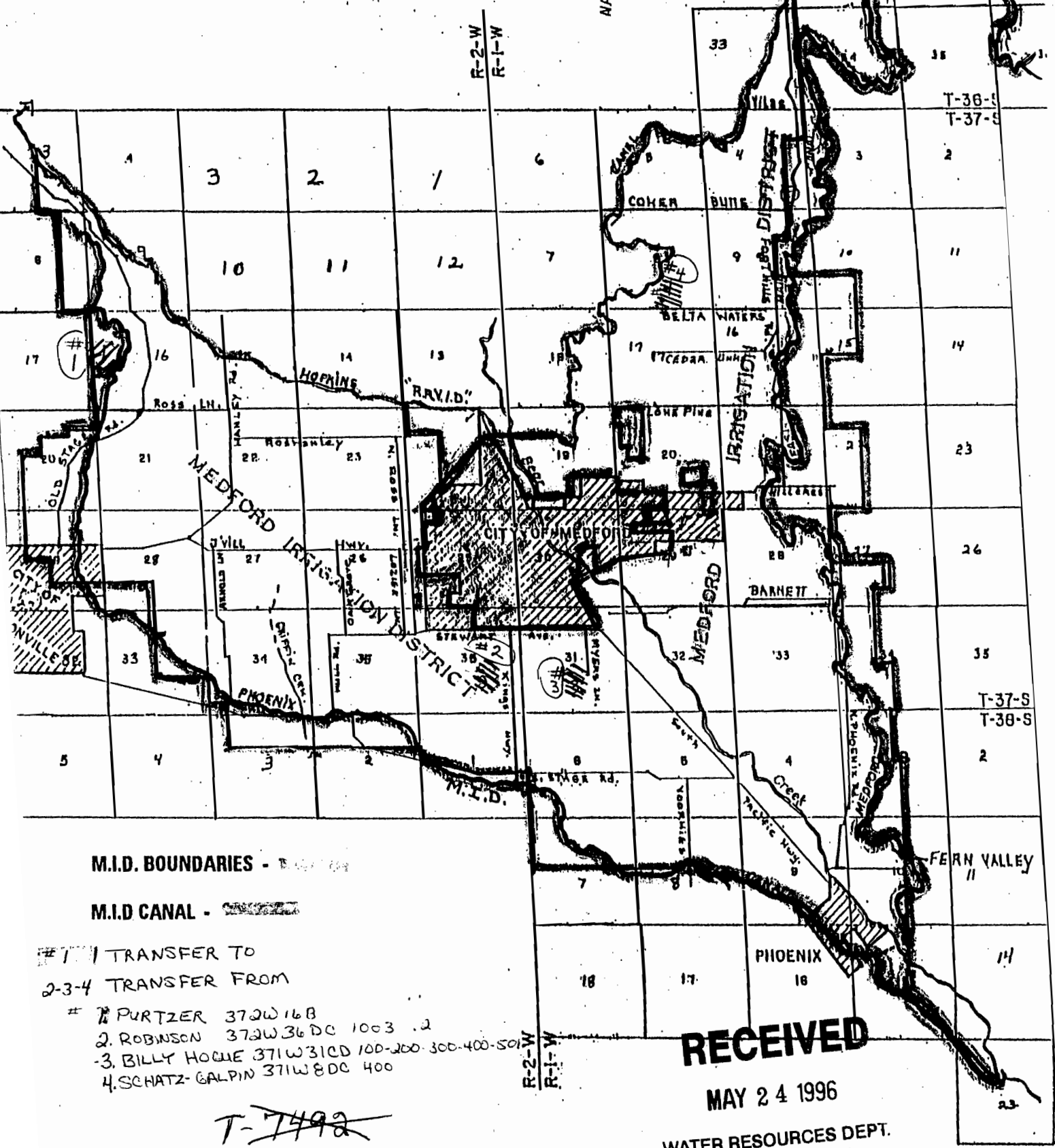
RECEIVED

MEDFORD IRRIGATION DISTRICT
 1340 MYERS LANE
 MEDFORD OR 97501
 (541)779-1462



RECEIVED

FEB 09 1996
 WATER RESOURCES DEPT.
 SALEM, OREGON



M.I.D. BOUNDARIES -

M.I.D CANAL -

#1 TRANSFER TO
 2-3-4 TRANSFER FROM

- #1 PURTZER 372W16B
- 2. ROBINSON 372W36DC 1003 .2
- 3. BILLY HOGUE 371W31CD 100-200-300-400-500
- 4. SCHATZ-GALPIN 371W8DC 400

~~T-7492~~

T-7511

RECEIVED

MAY 24 1996

WATER RESOURCES DEPT.
 SALEM, OREGON